

Retail Building For Sale

6,000 SF

0.47 Acres MOL

Sales Price: \$450,000

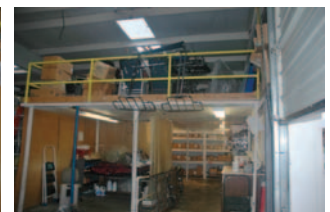
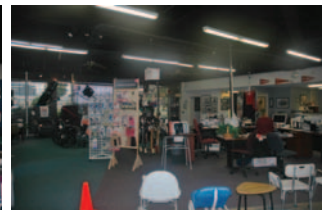
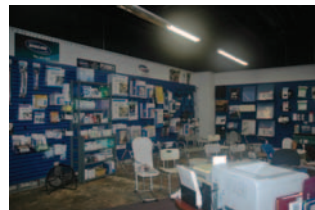


## 945 W. Wilshire Boulevard

Oklahoma City, Oklahoma 73116

### PROPERTY HIGHLIGHTS

- 6,000 SF Retail Building
- Located in the Nichols Hills Area
- 175' of Frontage on Wilshire
- Parking for 19 Cars



TOTAL SF	6,000 SF MOL
TOTAL ACRES	0.47 ACRES MOL
ZONING	I-2
TAXES	\$2,557
BUILT	1970

[www.naisullivangroup.com](http://www.naisullivangroup.com)

NO WARRANTY OR REPRESENTATION, EXPRESS OR IMPLIED, IS MADE AS TO THE ACCURACY OF THE INFORMATION CONTAINED HEREIN, AND THE SAME IS SUBMITTED SUBJECT TO ERRORS, OMISSIONS, CHANGE OF PRICE, RENTAL OR OTHER CONDITIONS, PRIOR SALE, LEASE OR FINANCING, OR WITHDRAWAL WITHOUT NOTICE, AND OF ANY SPECIAL LISTING CONDITIONS IMPOSED BY OUR PRINCIPALS NO WARRANTIES OR REPRESENTATIONS ARE MADE AS TO THE CONDITION OF THE PROPERTY OR ANY HAZARDS CONTAINED THEREIN ARE ANY TO BE IMPLIED.

For more information:

**Bob Sullivan, CCIM**

Cell: 1 405 641 9798  
rsullivan@ccim.net

4045 N.W. 64th Street, Suite 340  
Oklahoma City, Oklahoma 73116  
Office: 1 405 840 0600  
Fax: 1 405 840 0610



945 W. Wilshire Blvd.  
Oklahoma City, OK 73116



## DEMOGRAPHICS

### Population

1 Mile: 7,445	3 Mile: 62,490	5 Mile: 169,136
------------------	-------------------	--------------------

### Average Household Income

1 Mile: \$49,124	3 Mile: \$45,763	5 Mile: \$42,229
---------------------	---------------------	---------------------

### Total Households

1 Mile: 2,950	3 Mile: 28,483	5 Mile: 77,185
------------------	-------------------	-------------------

## LOCATION HIGHLIGHTS

- Dimensions: 175' x 118'



For more information:

**Bob Sullivan, CCIM**

Cell: 1 405 641 9798  
rsullivan@ccim.net

[www.naisullivangroup.com](http://www.naisullivangroup.com)



4045 N.W. 64th Street, Suite 340  
Oklahoma City, Oklahoma 73116  
Office: 1 405 840 0600  
Fax: 1 405 840 0610