



10710 N. May Avenue

Oklahoma City, Oklahoma 73120

PROPERTY HIGHLIGHTS

- Retail/Office Suite on End Cap
- Located Just South of Hefner Road on May Avenue
- All Store Fronts are Parallel to the Street
- Well Maintained
- Roof & Parking Lot Recently Renovated

SPACES AVAILABLE

- 10710: 1,000 SF MOL



TOTAL SF	7,775 SF MOL
----------	--------------

ZONING	C-3
--------	-----

GENERAL USE	Retail
-------------	--------

VACANT SF	1,000 MOL
-----------	-----------

For more information:

www.naisullivangroup.com

Lee Bollinger, CCIM

Cell: 1 405 202 3926

lee@naisullivangroup.com

4045 N.W. 64th Street, Suite 340

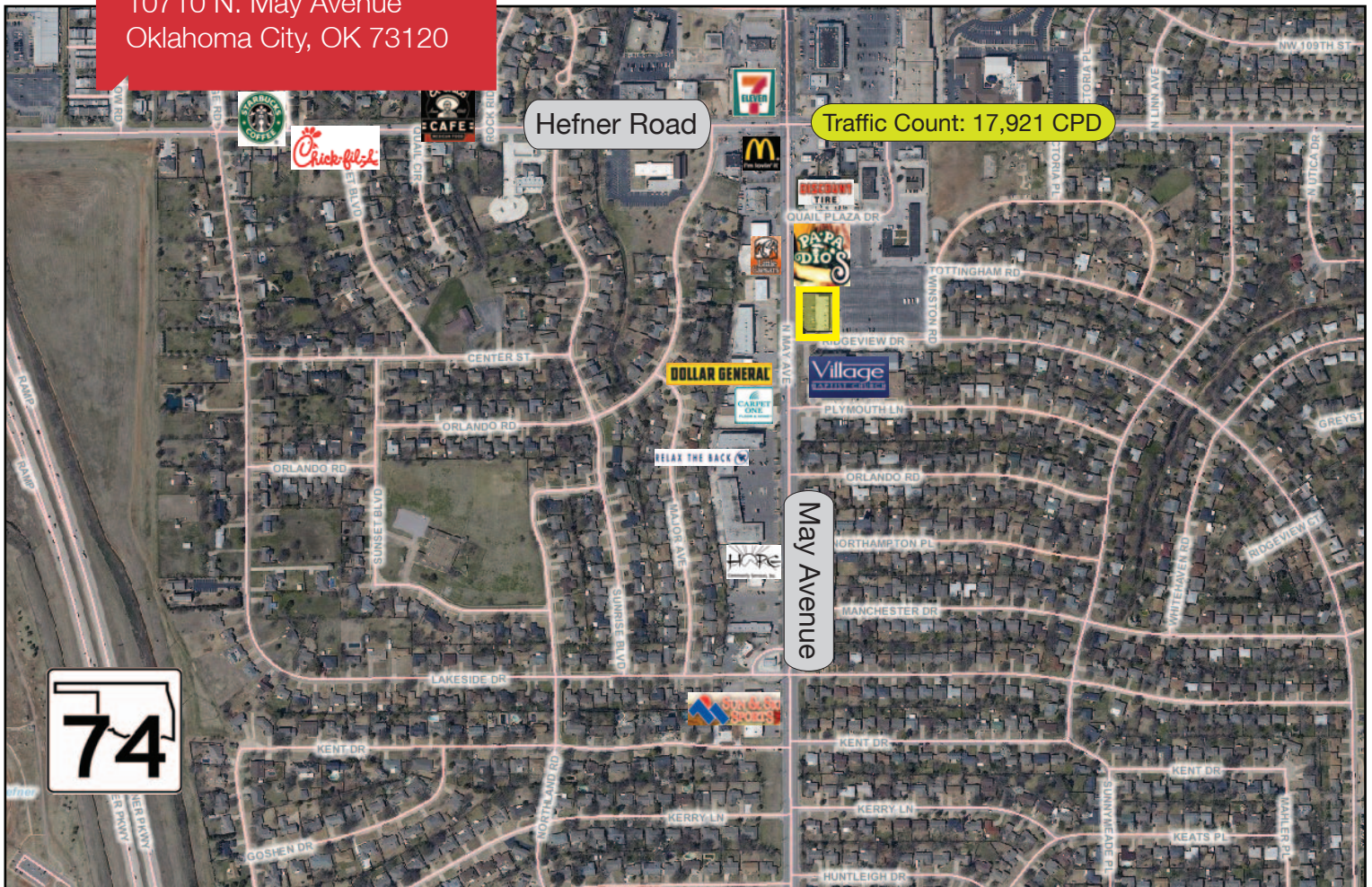
Oklahoma City, Oklahoma 73116

Office: 1 405 840 0600

Fax: 1 405 840 0610

NO WARRANTY OR REPRESENTATION, EXPRESS OR IMPLIED, IS MADE AS TO THE ACCURACY OF THE INFORMATION CONTAINED HEREIN, AND THE SAME IS SUBMITTED SUBJECT TO ERRORS, OMISSIONS, CHANGE OF PRICE, RENTAL OR OTHER CONDITIONS, PRIOR SALE, LEASE OR FINANCING, OR WITHDRAWAL WITHOUT NOTICE, AND OF ANY SPECIAL LISTING CONDITIONS IMPOSED BY OUR PRINCIPALS NO WARRANTIES OR REPRESENTATIONS ARE MADE AS TO THE CONDITION OF THE PROPERTY OR ANY HAZARDS CONTAINED THEREIN ARE ANY TO BE IMPLIED.

10710 N. May Avenue
Oklahoma City, OK 73120



DEMOGRAPHICS

Population

1 Mile:	3 Mile:	5 Mile:
10,639	65,506	182,557

Average Household Income

1 Mile:	3 Mile:	5 Mile:
\$72,999	\$70,963	\$71,807

Total Households

1 Mile:	3 Mile:	5 Mile:
5,096	31,171	81,925

LOCATION HIGHLIGHTS

- Dimension: 168' x 68'
- Frontage: 160' on May Avenue
- May Avenue Commercial Corridor

For more information:

Lee Bollinger, CCIM

Cell: 1 405 202 3926

lee@naisullivangroup.com

www.naisullivangroup.com

NAI Sullivan Group

4045 N.W. 64th Street, Suite 340
Oklahoma City, Oklahoma 73116
Office: 1 405 840 0600
Fax: 1 405 840 0610