

## 8101 N.W. 39th Expressway

Bethany, Oklahoma 73008

### PROPERTY HIGHLIGHTS

- 4.4995 Acres MOL
- Zoning C-G -Commercial
- Water & Sewer Along 39th Expressway

LAND IN ACRES	4.4995 ACRES MOL
ZONING	C-G Commercial
GENERAL USE	Commercial Retail

[www.naisullivangroup.com](http://www.naisullivangroup.com)

**Bob Sullivan, CCIM**

Cell: 1 405 641 9798

rsullivan@ccim.net

4045 N.W. 64th Street, Suite 340  
Oklahoma City, Oklahoma 73116

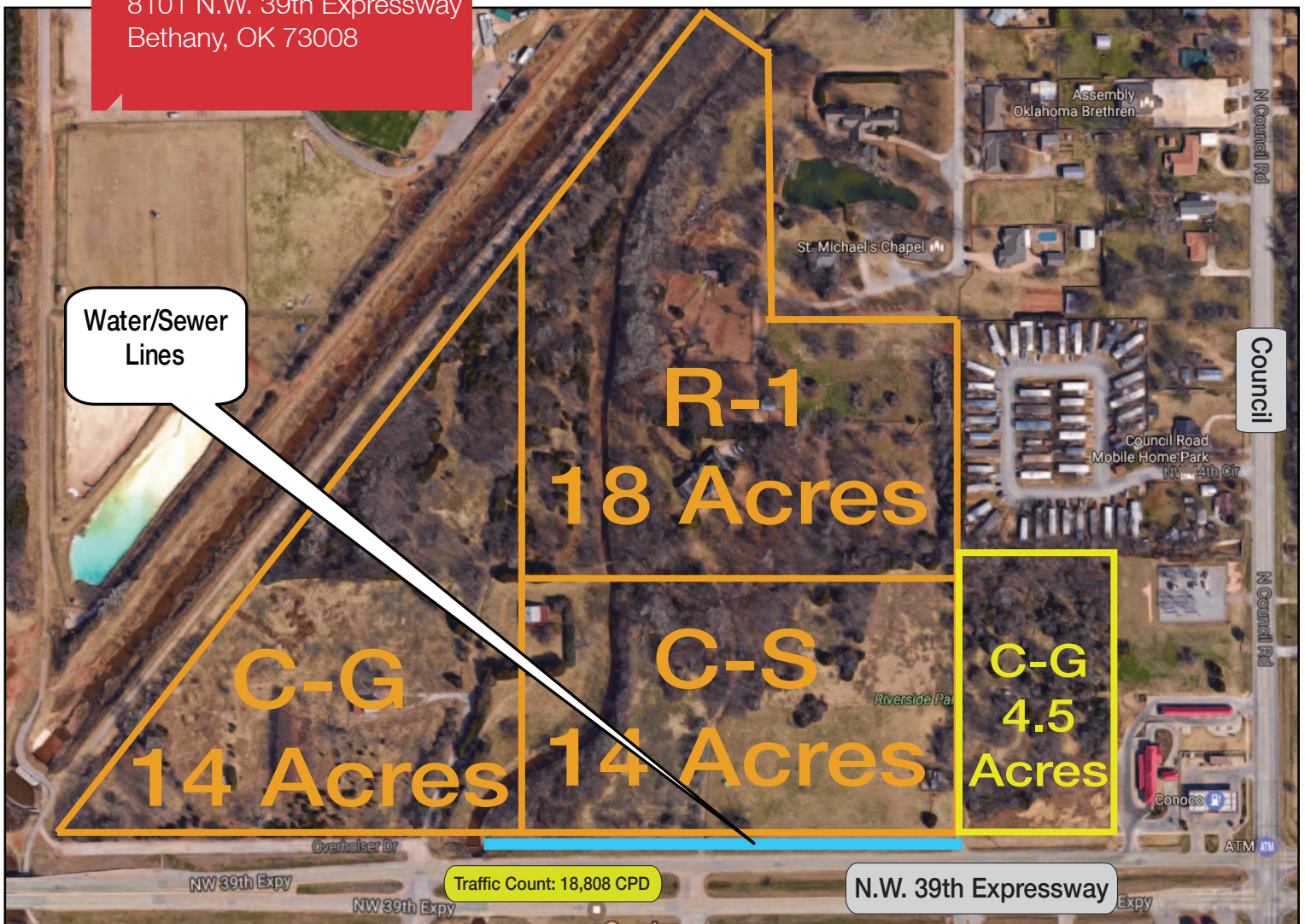
Office: 1 405 840 0600

Fax: 1 405 840 0610

NO WARRANTY OR REPRESENTATION, EXPRESS OR IMPLIED, IS MADE AS TO THE ACCURACY OF THE INFORMATION CONTAINED HEREIN, AND THE SAME IS SUBMITTED SUBJECT TO ERRORS, OMISSIONS, CHANGE OF PRICE, RENTAL OR OTHER CONDITIONS, PRIOR SALE, LEASE OR FINANCING, OR WITHDRAWAL WITHOUT NOTICE, AND OF ANY SPECIAL LISTING CONDITIONS IMPOSED BY OUR PRINCIPALS NO WARRANTIES OR REPRESENTATIONS ARE MADE AS TO THE CONDITION OF THE PROPERTY OR ANY HAZARDS CONTAINED THEREIN ARE ANY TO BE IMPLIED.



8101 N.W. 39th Expressway  
Bethany, OK 73008



## DEMOGRAPHICS

### Population

1 Mile: 3,022	3 Mile: 63,548	5 Mile: 144,817
------------------	-------------------	--------------------

### Average Household Income

1 Mile: \$58,771	3 Mile: \$46,010	5 Mile: \$46,699
---------------------	---------------------	---------------------

### Total Households

1 Mile: 1,260	3 Mile: 26,439	5 Mile: 61,589
------------------	-------------------	-------------------

## LOCATION HIGHLIGHTS

- Dimensions: Irregular
- Frontage: 330' on N.W. 39th Expressway
- Next to Lake Overholser
- 1 Mile to Wiley Post Airport
- Convenient Location Close to Yukon
- Retail Development in the Area

**Bob Sullivan, CCIM**

Cell: 1 405 641 9798

rsullivan@ccim.net

[www.naisullivangroup.com](http://www.naisullivangroup.com)

**NAI Sullivan Group**

4045 N.W. 64th Street, Suite 340  
Oklahoma City, Oklahoma 73116  
Office: 1 405 840 0600  
Fax: 1 405 840 0610