



12010 N.E. 23rd Street

Nicoma Park, Oklahoma 73066

PROPERTY HIGHLIGHTS

- Commercial Zoning
- Dimensions: 530' x 439'
- Frontage: 530' on N.E. 23rd Street

LAND IN ACRES 5.34 MOL

ZONING Commercial

www.naisullivangroup.com

NO WARRANTY OR REPRESENTATION, EXPRESS OR IMPLIED, IS MADE AS TO THE ACCURACY OF THE INFORMATION CONTAINED HEREIN, AND THE SAME IS SUBMITTED SUBJECT TO ERRORS, OMISSIONS, CHANGE OF PRICE, RENTAL OR OTHER CONDITIONS, PRIOR SALE, LEASE OR FINANCING, OR WITHDRAWAL WITHOUT NOTICE, AND OF ANY SPECIAL LISTING CONDITIONS IMPOSED BY OUR PRINCIPALS NO WARRANTIES OR REPRESENTATIONS ARE MADE AS TO THE CONDITION OF THE PROPERTY OR ANY HAZARDS CONTAINED THEREIN ARE ANY TO BE IMPLIED.

For more information:

Bob Sullivan, CCIM

Cell: 1 405 641 9798
rsullivan@ccim.net

4045 N.W. 64th Street, Suite 340
Oklahoma City, Oklahoma 73116
Office: 1 405 840 0600
Fax: 1 405 840 0610

12010 N.E. 23rd Street
Nicoma Park, Oklahoma
73066

Population

1 Mile: 1,584	3 Mile: 22,490	5 Mile: 65,284
------------------	-------------------	-------------------

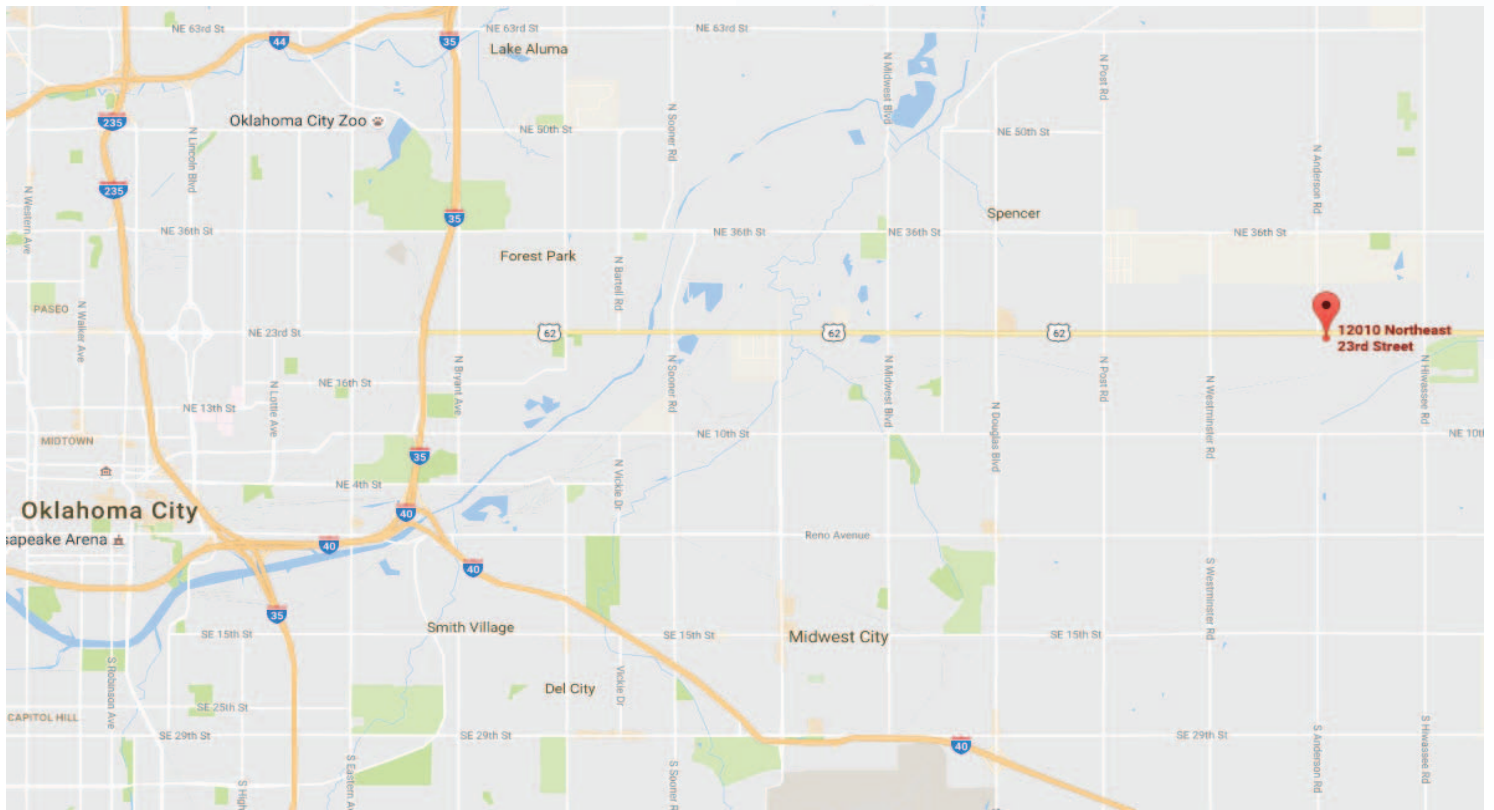
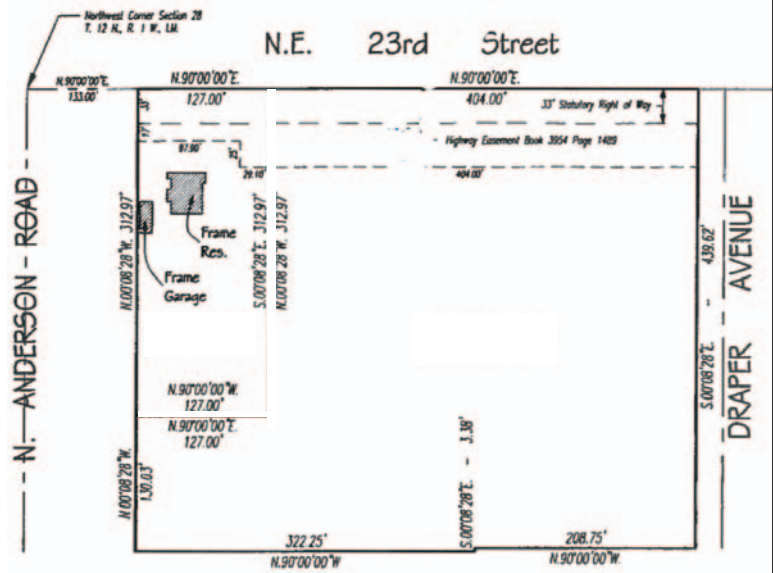
Average Household Income

1 Mile: \$49,021	3 Mile: \$51,241	5 Mile: \$51,513
---------------------	---------------------	---------------------

Total Households

1 Mile: 632	3 Mile: 8,789	5 Mile: 26,064
----------------	------------------	-------------------

PLAT OF SURVEY A part of the Northwest Quarter of Section 28, T. 12 N., R. 1 W., I.M. Oklahoma County, Oklahoma



For more information:

Bob Sullivan, CCIM

Cell: 1 405 641 9798
rsullivan@ccim.net

www.naisullivangroup.com

NAI Sullivan Group

4045 N.W. 64th Street, Suite 340
Oklahoma City, Oklahoma 73116
Office: 1 405 840 0600
Fax: 1 405 840 0610