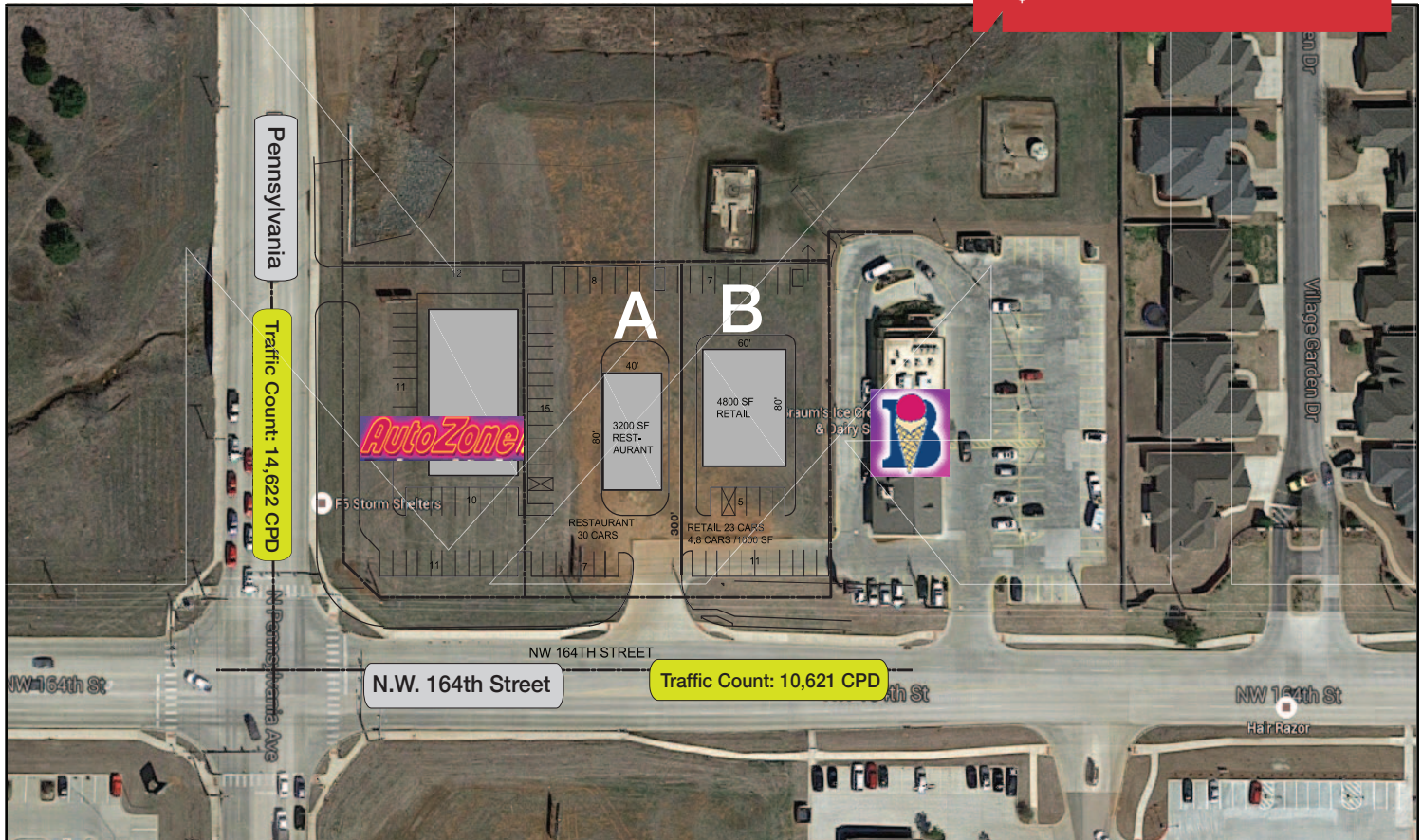


A: 0.80 Acres MOL For
Ground Lease
\$70,000/Year

B: 1,200 SF- 4,800 SF
For Lease
\$20.00/SF NNN



Northeast Corner of N.W. 164th Street & Pennsylvania

Oklahoma City, Oklahoma 73012

A PROPERTY HIGHLIGHTS

- 0.80 Acres For Ground Lease
- \$70,000/Year
- All Utilities to Site
- 110' x 300'
- Fast Food User Desired
- C-3 Zoning with Restrictions

B PROPERTY HIGHLIGHTS

- 4,800 SF For Lease
- \$20.00/SF NNN
- 2016 Delivery
- C-3 Zoning with Restrictions
- Divisible to 1,200 SF

www.naisullivangroup.com

NO WARRANTY OR REPRESENTATION, EXPRESS OR IMPLIED, IS MADE AS TO THE ACCURACY OF THE INFORMATION CONTAINED HEREIN, AND THE SAME IS SUBMITTED SUBJECT TO ERRORS, OMISSIONS, CHANGE OF PRICE, RENTAL OR OTHER CONDITIONS, PRIOR SALE, LEASE OR FINANCING, OR WITHDRAWAL WITHOUT NOTICE, AND OF ANY SPECIAL LISTING CONDITIONS IMPOSED BY OUR PRINCIPALS NO WARRANTIES OR REPRESENTATIONS ARE MADE AS TO THE CONDITION OF THE PROPERTY OR ANY HAZARDS CONTAINED THEREIN ARE ANY TO BE IMPLIED.

For more information:

David Hartnack

Sam Swanson

David's Cell: 1 405 761 8955

Sam's Cell: 1 405 208 2046

davidh@naisullivangroup.com

sam@naisullivangroup.com

4045 N.W. 64th Street, Suite 340

Oklahoma City, Oklahoma 73116

Office: 1 405 840 0600

Fax: 1 405 840 0610

N.E. Corner of N.W. 164th Street & Pennsylvania
Oklahoma City, Oklahoma
73012



DEMOGRAPHICS

Population

| | | |
|------------------|-------------------|--------------------|
| 1 Mile: 9,721 | 3 Mile: 59,637 | 5 Mile: 147,181 |
|------------------|-------------------|--------------------|

Average Household Income

| | | |
|---------------------|---------------------|---------------------|
| 1 Mile: \$92,633 | 3 Mile: \$71,798 | 5 Mile: \$61,163 |
|---------------------|---------------------|---------------------|

Total Households

| | | |
|------------------|-------------------|-------------------|
| 1 Mile: 3,589 | 3 Mile: 24,205 | 5 Mile: 61,365 |
|------------------|-------------------|-------------------|

TRACT B

| | | | |
|---------------------|---------------------|---------------------|---------------------|
| Suite 1 1,200 SF | Suite 2 1,200 SF | Suite 3 1,200 SF | Suite 4 1,200 SF |
|---------------------|---------------------|---------------------|---------------------|

1,200 SF - 4,800 SF Available

For more information:

David Hartnack
Sam Swanson

David's Cell: 1 405 761 8955
Sam's Cell: 1 405 208 2046
davidh@naisullivangroup.com
sam@naisullivangroup.com

www.naisullivangroup.com

4045 N.W. 64th Street, Suite 340
Oklahoma City, Oklahoma 73116
Office: 1 405 840 0600
Fax: 1 405 840 0610

NAI Sullivan Group