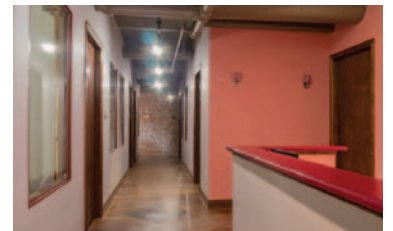
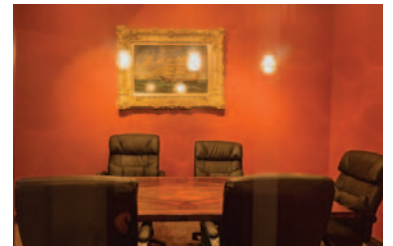




6015-6023 N.W. 120th Court
Oklahoma City, Oklahoma 73162

PROPERTY HIGHLIGHTS

- High End Finishes Throughout
- Additional Lighting
- Full Kitchen in Break Room
- Beautiful Conference Room
- Single or Multi-Tenant Building
- 3 Restrooms
- 6 Offices Plus 2 Separate Offices
- Secure Entry
- Built in 2002
- Association Takes Care of Lawncare, Sprinklers, Exterior Lighting & Parking Lot: \$4,800/Annually
- Large Showroom
- Wired for Sound Throughout



TOTAL SF	5,269 SF MOL
LAND IN ACRES	0.58 MOL
ZONING	PUD-624
GENERAL USE	Office

www.naisullivangroup.com

NO WARRANTY OR REPRESENTATION, EXPRESS OR IMPLIED, IS MADE AS TO THE ACCURACY OF THE INFORMATION CONTAINED HEREIN, AND THE SAME IS SUBMITTED SUBJECT TO ERRORS, OMISSIONS, CHANGE OF PRICE, RENTAL OR OTHER CONDITIONS, PRIOR SALE, LEASE OR FINANCING, OR WITHDRAWAL WITHOUT NOTICE, AND OF ANY SPECIAL LISTING CONDITIONS IMPOSED BY OUR PRINCIPALS NO WARRANTIES OR REPRESENTATIONS ARE MADE AS TO THE CONDITION OF THE PROPERTY OR ANY HAZARDS CONTAINED THEREIN ARE ANY TO BE IMPLIED.

For more information:

Nicole Mayes

Cell: 1 405 209 3992

nicole@naisullivangroup.com

4045 N.W. 64th Street, Suite 340

Oklahoma City, Oklahoma 73116

Office: 1 405 840 0600

Fax: 1 405 840 0610

6015-6023 N.W. 120th Court
Oklahoma City, Oklahoma
73162



DEMOGRAPHICS

Population

1 Mile:	3 Mile:	5 Mile:
12,188	60,080	144,781

Average Household Income

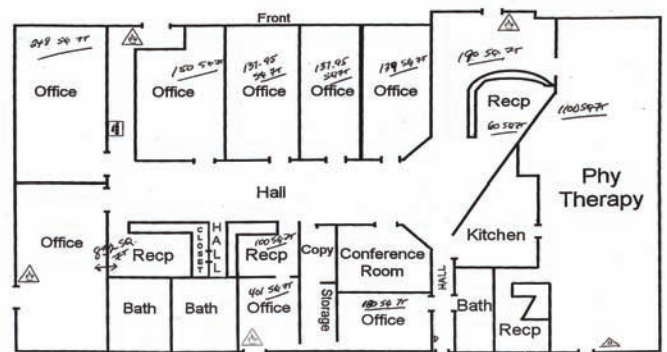
1 Mile:	3 Mile:	5 Mile:
\$75,291	\$71,108	\$57,315

Total Households

1 Mile:	3 Mile:	5 Mile:
5,556	26,041	63,892

LOCATION HIGHLIGHTS

- Just South of the Kilpatrick Turnpike
- Near the Corner of N.W. 122nd & MacArthur
- New Retail Development Nearby



For more information:

Nicole Mayes

Cell: 1 405 209 3992

nicole@naisullivangroup.com

www.naisullivangroup.com

NAISullivan Group

4045 N.W. 64th Street, Suite 340
Oklahoma City, Oklahoma 73116
Office: 1 405 840 0600
Fax: 1 405 840 0610