



1231 W. Rock Creek Road

Norman, Oklahoma 73069

PROPERTY HIGHLIGHTS

- Nice Location for Different Types of Visibility
- (3) Grade Level Doors
- 14' Clear Ceiling Height
- Fenced Yard
- Nice Offices
- Heavy Electric
- 14' Large Overhead Doors
- 3 Bay Service Garage
- Easy Access to Rock Creek Road & Flood Avenue



TOTAL SF	3,920 SF MOL
LAND IN ACRES	5.63 MOL
ZONING	Industrial
GENERAL USE	Industrial
ANNUAL TAXES	\$3,872

www.naisullivangroup.com

NO WARRANTY OR REPRESENTATION, EXPRESS OR IMPLIED, IS MADE AS TO THE ACCURACY OF THE INFORMATION CONTAINED HEREIN, AND THE SAME IS SUBMITTED SUBJECT TO ERRORS, OMISSIONS, CHANGE OF PRICE, RENTAL OR OTHER CONDITIONS, PRIOR SALE, LEASE OR FINANCING, OR WITHDRAWAL WITHOUT NOTICE, AND OF ANY SPECIAL LISTING CONDITIONS IMPOSED BY OUR PRINCIPALS NO WARRANTIES OR REPRESENTATIONS ARE MADE AS TO THE CONDITION OF THE PROPERTY OR ANY HAZARDS CONTAINED THEREIN ARE ANY TO BE IMPLIED.

For more information:

Irmon Gray

Cell: 1 405 474 7286

irmon@naisullivangroup.com

4045 N.W. 64th Street, Suite 340
Oklahoma City, Oklahoma 73116
Office: 1 405 840 0600
Fax: 1 405 840 0610

1231 W. Rock Creek Road
Norman, OK 73069

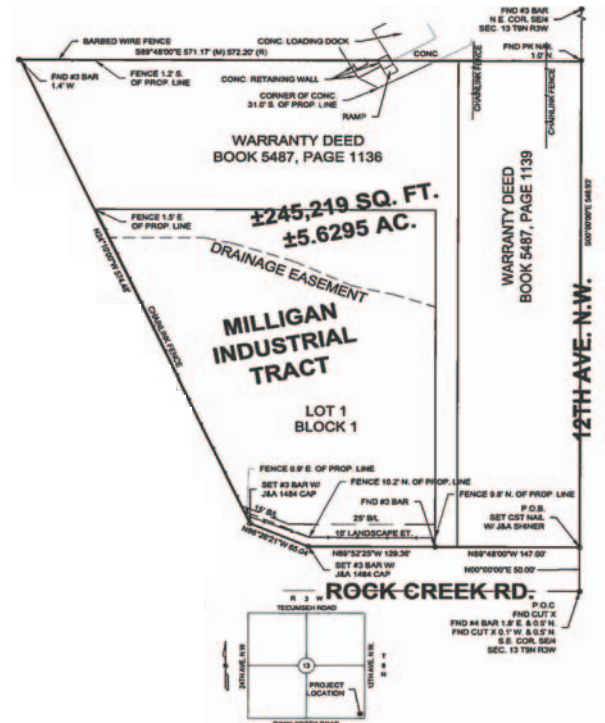


LOCATION HIGHLIGHTS

- Dimensions: Irregular
- Frontage: 276' on Rock Creek Road
- Very Active Industrial Park Area
- Easy Access to I-35, Flood Avenue, Downtown Norman
- Septic System & other City Utilities
- Traffic Count: 23,683 CPD

DEMOGRAPHICS

Population		
1 Mile: 6,434	3 Mile: 35,945	5 Mile: 93,180
Average Household Income		
1 Mile: \$46,899	3 Mile: \$34,472	5 Mile: \$39,809
Total Households		
1 Mile: 2,340	3 Mile: 15,149	5 Mile: 38,461



For more information:

Irmon Gray

Cell: 1 405 474 7286

irmon@naisullivangroup.com

www.naisullivangroup.com

NAISullivan Group

4045 N.W. 64th Street, Suite 340
Oklahoma City, Oklahoma 73116
Office: 1 405 840 0600
Fax: 1 405 840 0610