

Retail Space For Lease

8,775 SF

Lease Price: \$9.00/NNN

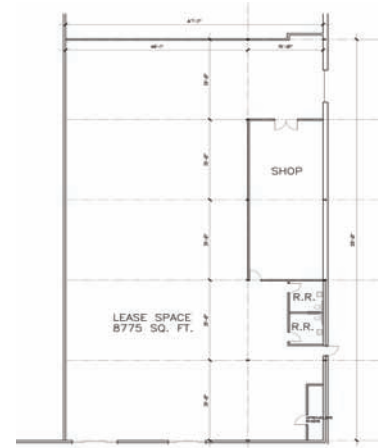


## 5805-5835 W. Reno

Oklahoma City, Oklahoma 73127

### PROPERTY HIGHLIGHTS

- Newly Renovated Retail
- Great Frontage on Reno & MacArthur
- Renovation to be Completed in 2016
- Part of the Westgate/Outlet Mall District of OKC



TOTAL SF	50,360 SF MOL
LAND IN ACRES	4.47 MOL
ZONING	I-2
GENERAL USE	Retail
VACANT SF	8,775 SF

[www.naisullivangroup.com](http://www.naisullivangroup.com)

NO WARRANTY OR REPRESENTATION, EXPRESS OR IMPLIED, IS MADE AS TO THE ACCURACY OF THE INFORMATION CONTAINED HEREIN, AND THE SAME IS SUBMITTED SUBJECT TO ERRORS, OMISSIONS, CHANGE OF PRICE, RENTAL OR OTHER CONDITIONS, PRIOR SALE, LEASE OR FINANCING, OR WITHDRAWAL WITHOUT NOTICE, AND OF ANY SPECIAL LISTING CONDITIONS IMPOSED BY OUR PRINCIPALS NO WARRANTIES OR REPRESENTATIONS ARE MADE AS TO THE CONDITION OF THE PROPERTY OR ANY HAZARDS CONTAINED THEREIN ARE ANY TO BE IMPLIED.

David Hartnack / Sam Swanson / Nathan Wilson

David's Cell: 1 405 761 8955  
 Sam's Cell: 1 405 208 2046  
 Nathan's Cell: 1 405 760 5327  
[davidh@naisullivangroup.com](mailto:davidh@naisullivangroup.com)  
[sam@naisullivangroup.com](mailto:sam@naisullivangroup.com)  
[nathan@naisullivangroup.com](mailto:nathan@naisullivangroup.com)

4045 N.W. 64th Street, Suite 340  
 Oklahoma City, Oklahoma 73116  
 Office: 1 405 840 0600  
 Fax: 1 405 840 0610

5805-5835 W. Reno  
Oklahoma City, OK 73127



## DEMOGRAPHICS

### Population

<b>1 Mile:</b> 2,724	<b>3 Mile:</b> 60,471	<b>5 Mile:</b> 184,948
-------------------------	--------------------------	---------------------------

### Average Household Income

<b>1 Mile:</b> \$24,216	<b>3 Mile:</b> \$37,343	<b>5 Mile:</b> \$38,639
----------------------------	----------------------------	----------------------------

### Total Households

<b>1 Mile:</b> 954	<b>3 Mile:</b> 23,923	<b>5 Mile:</b> 71,351
-----------------------	--------------------------	--------------------------

## LOCATION HIGHLIGHTS

- Frontage: on Reno & MacArthur
- North East of Wal-Mart Supercenter
- Easy Access to I-40
- High Intersection Traffic Counts
- Adjacent to Oklahoma City's Furniture District
- 175,864 People Live within a 10 Minute Drive



David Hartnack / Sam Swanson / Nathan Wilson

David's Cell: 1 405 761 8955  
Sam's Cell: 1 405 208 2046  
Nathan's Cell: 1 405 760 5327  
davidh@naisullivangroup.com  
sam@naisullivangroup.com  
nathan@naisullivangroup.com

4045 N.W. 64th Street, Suite 340  
Oklahoma City, Oklahoma 73116  
Office: 1 405 840 0600  
Fax: 1 405 840 0610

[www.naisullivangroup.com](http://www.naisullivangroup.com)