



1341 S.W. 59th Street

Oklahoma City, Oklahoma 73119

PROPERTY HIGHLIGHTS

- Vacant Lot Ready to Build On
- High Visibility Location on S.W. 59th
- 2 Curb Cuts & Pylon Sign
- Paving & Utilities in Place
- Will Accommodate a 5,000 SF Building

LAND IN ACRES **0.3817 MOL**

ZONING **C-3**

2015 TAXES **\$322**

www.naisullivangroup.com

NO WARRANTY OR REPRESENTATION, EXPRESS OR IMPLIED, IS MADE AS TO THE ACCURACY OF THE INFORMATION CONTAINED HEREIN, AND THE SAME IS SUBMITTED SUBJECT TO ERRORS, OMISSIONS, CHANGE OF PRICE, RENTAL OR OTHER CONDITIONS, PRIOR SALE, LEASE OR FINANCING, OR WITHDRAWAL WITHOUT NOTICE, AND OF ANY SPECIAL LISTING CONDITIONS IMPOSED BY OUR PRINCIPALS NO WARRANTIES OR REPRESENTATIONS ARE MADE AS TO THE CONDITION OF THE PROPERTY OR ANY HAZARDS CONTAINED THEREIN ARE ANY TO BE IMPLIED.

For more information:

Darryl Meason

Cell: 1 405 205 9440

darryl@naisullivangroup.com

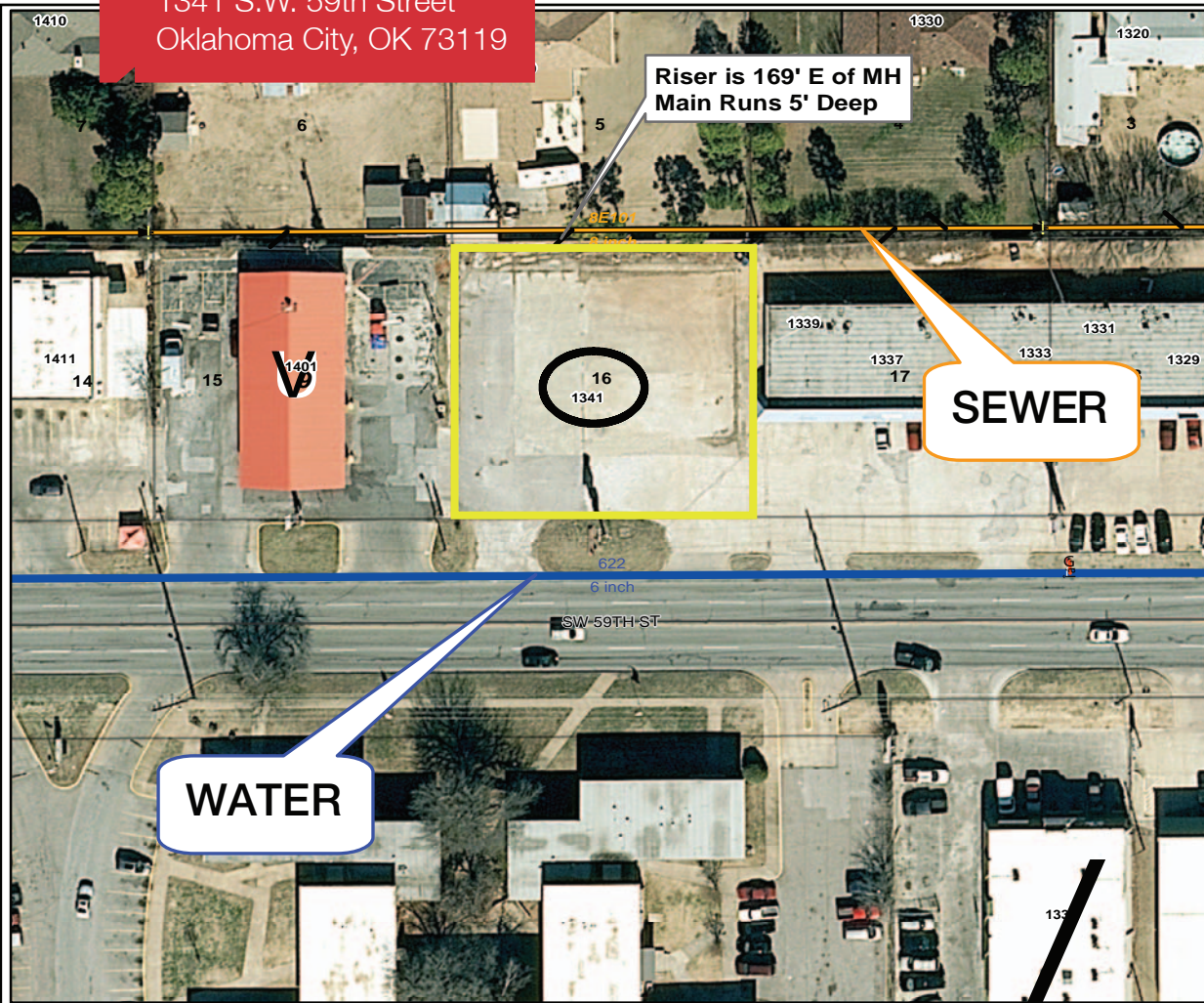
4045 N.W. 64th Street, Suite 340

Oklahoma City, Oklahoma 73116

Office: 1 405 840 0600

Fax: 1 405 840 0610

1341 S.W. 59th Street
Oklahoma City, OK 73119



Legend

Water Meter
Type
Compound
Current
Detector Check
Magnetic Orifice
Pilo
Positive Displacement
Proportional
Sonic
Turbine
Venturi
Meter
Water Hydrant

Water Pressurized Main
LifecycleStatus
Abandoned
Active
Proposed
Removed

Sewer Manhole
SubType
SDropManhole
SSplitManhole
SStandardManhole
SSummitManhole

Sewer Lateral Line
LifecycleStatus
Proposed
Active
Abandoned
Removed

Private Development Tracking
GIS2.IMAGERY.Aerial20153Band
RGB
Red: Band_1
Green: Band_2
Blue: Band_3

Disclaimer:
NEITHER THE CITY NOR ANY OF ITS TRUSTS NOR ANY OF THEIR EMPLOYEES, OFFICERS, OR AGENTS WARRANT OR REPRESENT THAT THE INFORMATION OR DATA ON THIS DOCUMENT IS ACCURATE OR APPROPRIATE FOR USE OR RE-USE FOR ANY PURPOSE. THE USER OF THIS DOCUMENT ASSUMES THE SOLE DUTY AND FULL RESPONSIBILITY FOR THE VERIFICATION OF THE INFORMATION AND DATA CONTAINED THEREIN. ANY USE OF OR RELIANCE UPON THIS DOCUMENT OF THE INFORMATION OR DATA CONTAINED THEREIN IS SOLELY, TOTALLY, AND EXCLUSIVELY AT THE

DEMOGRAPHICS

Population		
1 Mile: 15,686	3 Mile: 119,979	5 Mile: 198,307
Average Household Income		
1 Mile: \$33,308	3 Mile: \$35,616	5 Mile: \$39,182
Total Households		
1 Mile: 5,757	3 Mile: 44,061	5 Mile: 72,468

LOCATION HIGHLIGHTS

- Dimensions: 125' x 133'
- Frontage: 125' on S.W. 59th Street
- Thriving Retail District
- Across from 2 Apartment Complexes

For more information:

Darryl Meason

Cell: 1 405 205 9440

darryl@naisullivangroup.com

www.naisullivangroup.com

NAI Sullivan Group

4045 N.W. 64th Street, Suite 340
Oklahoma City, Oklahoma 73116
Office: 1 405 840 0600
Fax: 1 405 840 0610