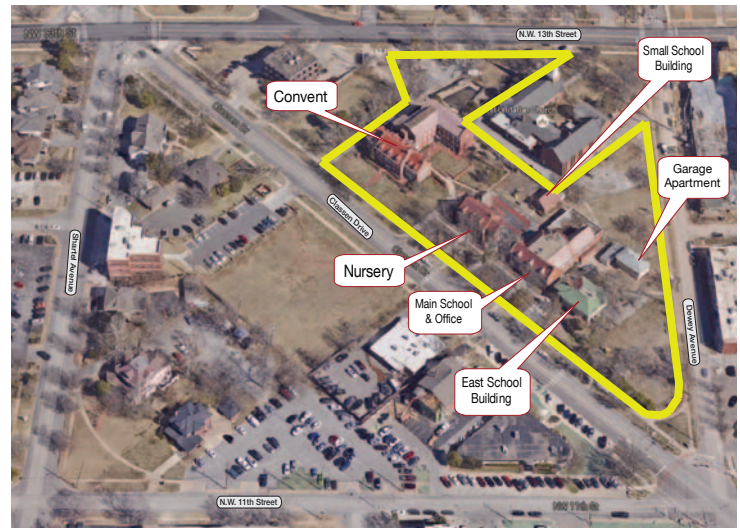


1300 Classen Drive

Oklahoma City, Oklahoma 73103

PROPERTY HIGHLIGHTS

- Convent Building Built in Early 20th Century
30,394 SF
- Main School & Office Building
14,167 SF
- Nursery School Building Built in the 1920's
6,726 SF
- Small School Building Built in the 1920's
1,404 SF
- East School Building Built in 1915
5,316 SF
- Garage Apartment
1,760 SF
- 4 Car Garage
- Playground, Courtyard, Fencing & Pool



TOTAL SF	59,770 SF MOL
LAND IN ACRES	3.51 ACRES MOL
ZONING	DTD-1 (Downtown Transitional)

www.naisullivangroup.com

NO WARRANTY OR REPRESENTATION, EXPRESS OR IMPLIED, IS MADE AS TO THE ACCURACY OF THE INFORMATION CONTAINED HEREIN, AND THE SAME IS SUBMITTED SUBJECT TO ERRORS, OMISSIONS, CHANGE OF PRICE, RENTAL OR OTHER CONDITIONS, PRIOR SALE, LEASE OR FINANCING, OR WITHDRAWAL WITHOUT NOTICE, AND OF ANY SPECIAL LISTING CONDITIONS IMPOSED BY OUR PRINCIPALS NO WARRANTIES OR REPRESENTATIONS ARE MADE AS TO THE CONDITION OF THE PROPERTY OR ANY HAZARDS CONTAINED THEREIN ARE ANY TO BE IMPLIED.

For more information:

Nicole Mayes

Nicole's Cell: 1 405 209 3992
nicole@naisullivangroup.com

4045 N.W. 64th Street, Suite 340
Oklahoma City, Oklahoma 73116
Office: 1 405 840 0600
Fax: 1 405 840 0610

1300 Classen Drive
Oklahoma City, OK 73103



DEMOGRAPHICS

Population

1 Mile:	3 Mile:	5 Mile:
14,259	84,493	214,629

Average Household Income

1 Mile:	3 Mile:	5 Mile:
\$42,667	\$34,715	\$35,495

Total Households

1 Mile:	3 Mile:	5 Mile:
5,702	34,851	85,563

LOCATION HIGHLIGHTS

- Great Location Between Classen, Dewey & 13th Street
- Centrally Located in the Midtown Area
- Near St. Anthony Hospital
- Easy Access to I-235
- Close to Trendy Restaurants & Shopping

Nicole Mayes

Nicole's Cell: 1 405 209 3992
nicole@naisullivangroup.com

www.naisullivangroup.com

NASullivan Group

4045 N.W. 64th Street, Suite 340
Oklahoma City, Oklahoma 73116
Office: 1 405 840 0600
Fax: 1 405 840 0610