



4825 N.W. 23rd Street

Oklahoma City, Oklahoma 73127

PROPERTY HIGHLIGHTS

- 43 Total Beds
- Assisted Living Center in Great Condition with 26 Beds
- Full Kitchen
- Laundry Room
- Dining Room
- Separate Memory Care has 17 Beds
- Security Entrance & Exit
- Built in 1971 with Additions in 1999 & 2001



TOTAL SF	24,651 SF MOL
LAND IN ACRES	1.09 MOL
ZONING	PUD 815
GENERAL USE	Assisted Living Center

www.naisullivangroup.com

NO WARRANTY OR REPRESENTATION, EXPRESS OR IMPLIED, IS MADE AS TO THE ACCURACY OF THE INFORMATION CONTAINED HEREIN, AND THE SAME IS SUBMITTED SUBJECT TO ERRORS, OMISSIONS, CHANGE OF PRICE, RENTAL OR OTHER CONDITIONS, PRIOR SALE, LEASE OR FINANCING, OR WITHDRAWAL WITHOUT NOTICE, AND OF ANY SPECIAL LISTING CONDITIONS IMPOSED BY OUR PRINCIPALS NO WARRANTIES OR REPRESENTATIONS ARE MADE AS TO THE CONDITION OF THE PROPERTY OR ANY HAZARDS CONTAINED THEREIN ARE ANY TO BE IMPLIED.

For more information:

Bob Sullivan, CCIM

Cell: 1 405 641 9798
rsullivan@ccim.net

4045 N.W. 64th Street, Suite 340
Oklahoma City, Oklahoma 73116
Office: 1 405 840 0600
Fax: 1 405 840 0610

4825 N.W. 23rd Street
Oklahoma City, OK 73127



DEMOGRAPHICS

Population

1 Mile:	3 Mile:	5 Mile:
16,268	97,577	199,511

Average Household Income

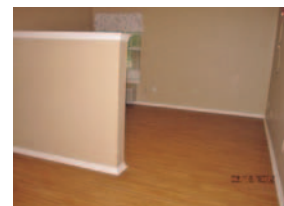
1 Mile:	3 Mile:	5 Mile:
\$40,580	\$39,108	\$39,853

Total Households

1 Mile:	3 Mile:	5 Mile:
6,493	40,584	82,218

LOCATION HIGHLIGHTS

- Dimensions: Irregular
- Windsor Hills Area Fronting on N.W. 23rd
- Next to Recently Updated Windsor Hills Retail
- Many Restaurants/Retail in the Area



For more information:

Bob Sullivan, CCIM

Cell: 1 405 641 9798

rsullivan@ccim.net

www.naisullivangroup.com

NAI Sullivan Group

4045 N.W. 64th Street, Suite 340
Oklahoma City, Oklahoma 73116
Office: 1 405 840 0600
Fax: 1 405 840 0610