

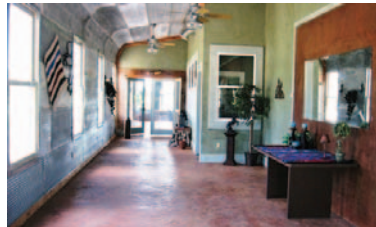


14555 W. Frisco Drive

Yukon, Oklahoma 73099

PROPERTY HIGHLIGHTS

- 3,200 SF Insulated Warehouse
- 1,600 SF Insulated Office/Storage
- Safe Room
- 14' Clear Span Warehouse
- (3) 12' Rollup Grade Level Doors
- Fully Climate Controlled with Heated Floor
- Office Nicely Finished
- 2 Restrooms
- Great for Warehouse, Distribution or Service Business



TOTAL SF	4,800 SF MOL
LAND IN ACRES	0.50 MOL
ZONING	Industrial

www.naisullivangroup.com

NO WARRANTY OR REPRESENTATION, EXPRESS OR IMPLIED, IS MADE AS TO THE ACCURACY OF THE INFORMATION CONTAINED HEREIN, AND THE SAME IS SUBMITTED SUBJECT TO ERRORS, OMISSIONS, CHANGE OF PRICE, RENTAL OR OTHER CONDITIONS, PRIOR SALE, LEASE OR FINANCING, OR WITHDRAWAL WITHOUT NOTICE, AND OF ANY SPECIAL LISTING CONDITIONS IMPOSED BY OUR PRINCIPALS NO WARRANTIES OR REPRESENTATIONS ARE MADE AS TO THE CONDITION OF THE PROPERTY OR ANY HAZARDS CONTAINED THEREIN ARE ANY TO BE IMPLIED.

For more information:

Irmon Gray

Darryl Meason

Irmon's Cell: 1 405 474 7286

Darryl's Cell: 1 405 205 9440

irmon@naisullivangroup.com

darryl@naisullivangroup.com

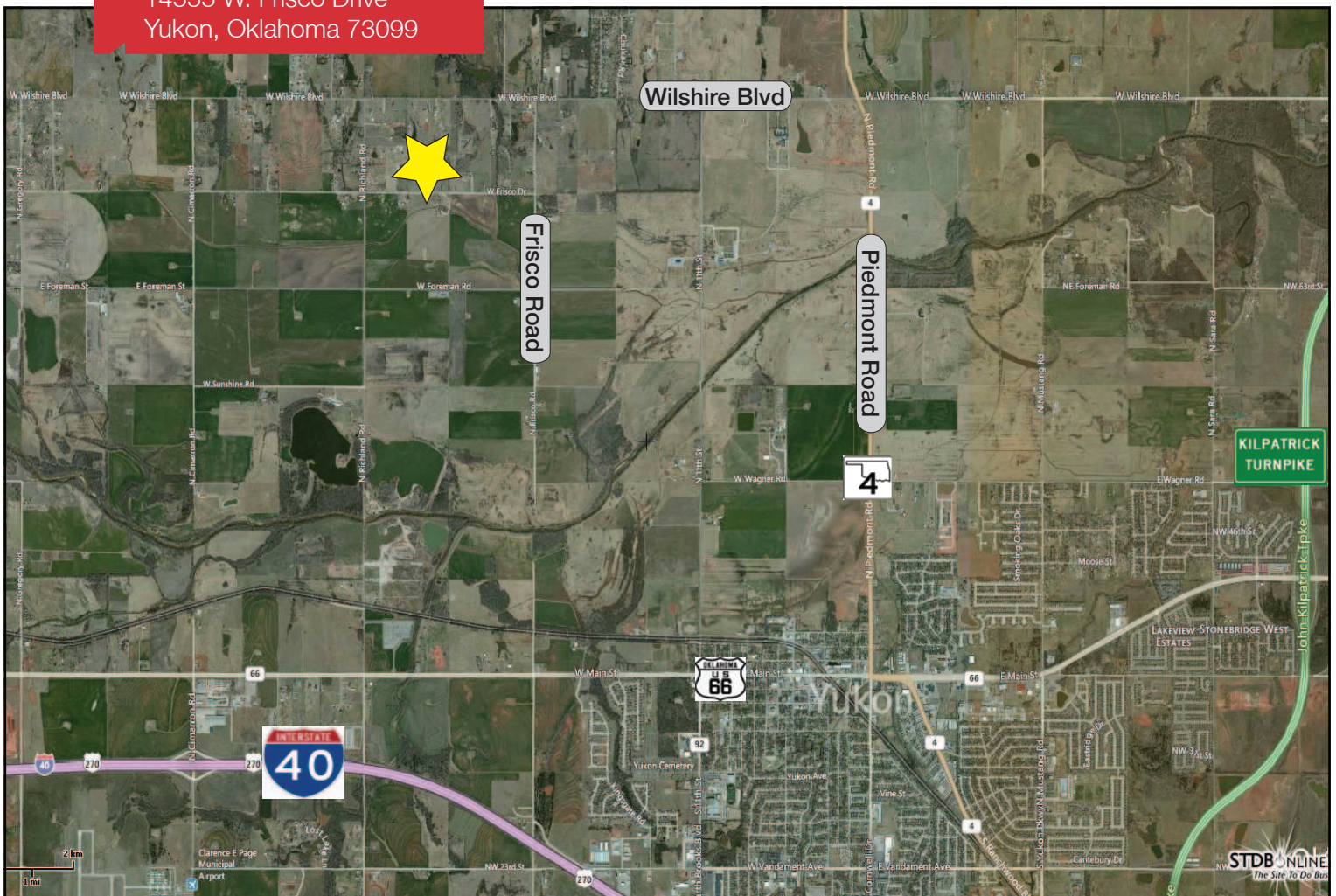
4045 N.W. 64th Street, Suite 340

Oklahoma City, Oklahoma 73116

Office: 1 405 840 0600

Fax: 1 405 840 0610

14555 W. Frisco Drive
Yukon, Oklahoma 73099



DEMOGRAPHICS

Population

1 Mile:	3 Mile:	5 Mile:
193	1,869	30,463

Average Household Income

1 Mile:	3 Mile:	5 Mile:
\$76,562	\$74,438	\$63,659

Total Households

1 Mile:	3 Mile:	5 Mile:
71	702	11,643

LOCATION HIGHLIGHTS

- West of Yukon on Highway 66 to Richland
- North on Richland 2.5 Miles to Frisco Drive
- East 0.50 Miles to 14555 W. Frisco Drive

For more information:

Irmon Gray
Darryl Meason

Irmon's Cell: 1 405 474 7286
Darryl's Cell: 1 405 205 9440
irmon@naisullivangroup.com
darryl@naisullivangroup.com

www.naisullivangroup.com

4045 N.W. 64th Street, Suite 340
Oklahoma City, Oklahoma 73116
Office: 1 405 840 0600
Fax: 1 405 840 0610

NAI Sullivan Group