



1233 S.E. 44th Street

Oklahoma City, Oklahoma 73129

PROPERTY HIGHLIGHTS

- Visible from I-35
- Large Fenced Yard for Storage or Parking
- Good Ceiling Height for Industrial Use
- Small Office
- New Roof
- Cinder Block Construction
- 2 Grade Level Doors, 1 Dock High Ramp & 1 Dock High Door, 4 Total Overhead Doors
- Open Floor Plan



TOTAL SF	10,500 SF MOL
LAND IN ACRES	1.7146 MOL
ZONING	C-3
GENERAL USE	Industrial

www.naisullivangroup.com

NO WARRANTY OR REPRESENTATION, EXPRESS OR IMPLIED, IS MADE AS TO THE ACCURACY OF THE INFORMATION CONTAINED HEREIN, AND THE SAME IS SUBMITTED SUBJECT TO ERRORS, OMISSIONS, CHANGE OF PRICE, RENTAL OR OTHER CONDITIONS, PRIOR SALE, LEASE OR FINANCING, OR WITHDRAWAL WITHOUT NOTICE, AND OF ANY SPECIAL LISTING CONDITIONS IMPOSED BY OUR PRINCIPALS NO WARRANTIES OR REPRESENTATIONS ARE MADE AS TO THE CONDITION OF THE PROPERTY OR ANY HAZARDS CONTAINED THEREIN ARE ANY TO BE IMPLIED.

For more information:

Nicole Mayes

Cell: 1 405 209 3992

nicole@naisullivangroup.com

4045 N.W. 64th Street, Suite 340

Oklahoma City, Oklahoma 73116

Office: 1 405 840 0600

Fax: 1 405 840 0610

1233 S.E. 44th Street
Oklahoma City, Oklahoma
73111



DEMOGRAPHICS

Population

1 Mile:	3 Mile:	5 Mile:
158	15,861	120,002

Average Household Income

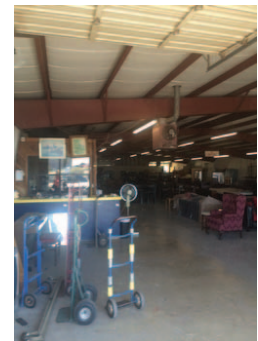
1 Mile:	3 Mile:	5 Mile:
\$55,000	\$38,391	\$36,628

Total Households

1 Mile:	3 Mile:	5 Mile:
63	5,829	43,524

LOCATION HIGHLIGHTS

- Dimensions: Irregular. 330' Deep
- Frontage: 133.6' on S.E. 44th Street
- Easy Access to I-35
- Near other Industrial & Retail Areas



For more information:

Nicole Mayes

Cell: 1 405 209 3992

nicole@naisullivangroup.com

www.naisullivangroup.com

NAISullivan Group

4045 N.W. 64th Street, Suite 340
Oklahoma City, Oklahoma 73116
Office: 1 405 840 0600
Fax: 1 405 840 0610