



4700 S. Sunnylane Road
Oklahoma City, Oklahoma 73135

PROPERTY HIGHLIGHTS

- Area South of S.E. 44th Street & Sunnylane
- Next to Mosaic Apartment Homes Complex
- Water & Sewer to Site
- R-4 Zoning in Place Allowing for 20 Units Per Acre

LAND IN ACRES **1.54 MOL**

ZONING **R-4**

www.naisullivangroup.com

NO WARRANTY OR REPRESENTATION, EXPRESS OR IMPLIED, IS MADE AS TO THE ACCURACY OF THE INFORMATION CONTAINED HEREIN, AND THE SAME IS SUBMITTED SUBJECT TO ERRORS, OMISSIONS, CHANGE OF PRICE, RENTAL OR OTHER CONDITIONS, PRIOR SALE, LEASE OR FINANCING, OR WITHDRAWAL WITHOUT NOTICE, AND OF ANY SPECIAL LISTING CONDITIONS IMPOSED BY OUR PRINCIPALS NO WARRANTIES OR REPRESENTATIONS ARE MADE AS TO THE CONDITION OF THE PROPERTY OR ANY HAZARDS CONTAINED THEREIN ARE ANY TO BE IMPLIED.

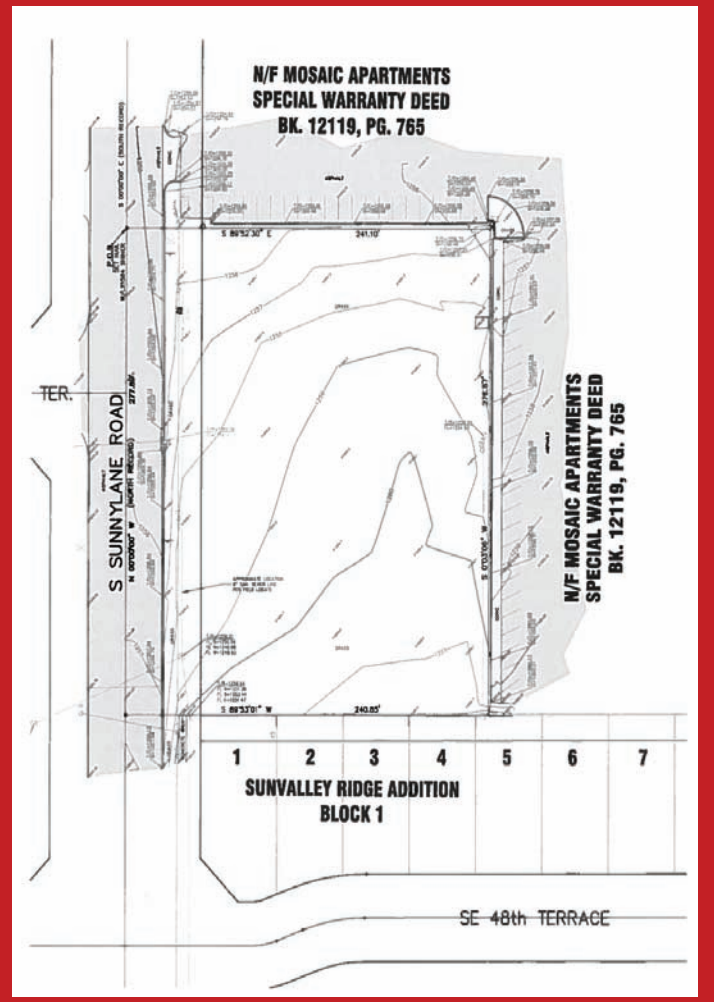
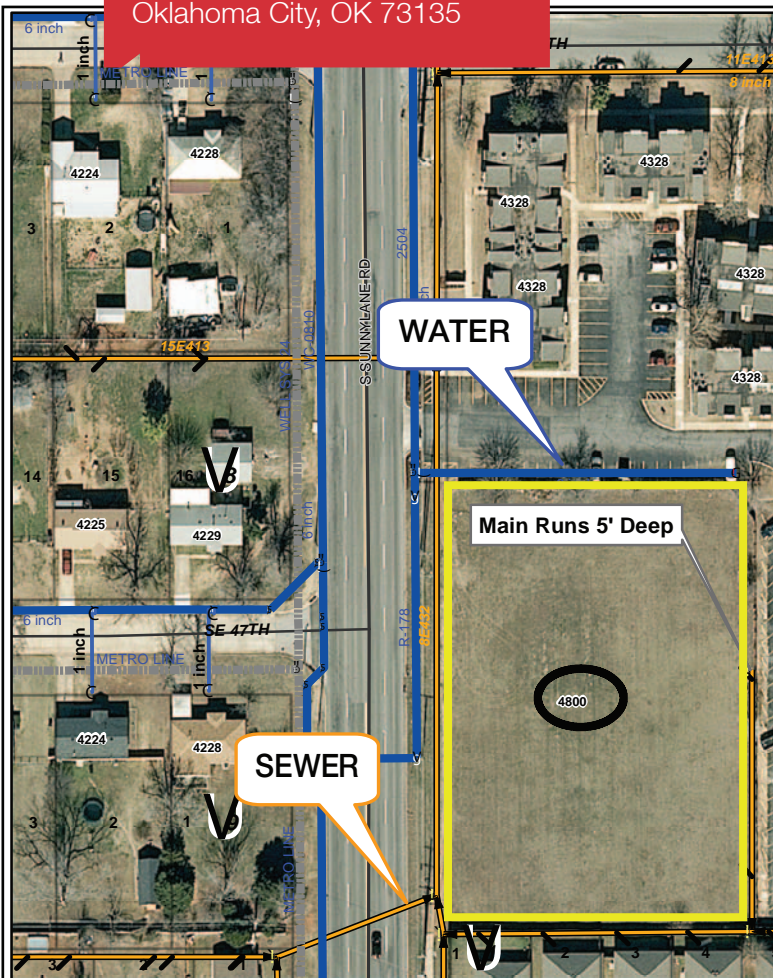
For more information:

Bob Sullivan, CCIM

Cell: 1 405 641 9798
rsullivan@ccim.net

4045 N.W. 64th Street, Suite 340
Oklahoma City, Oklahoma 73116
Office: 1 405 840 0600
Fax: 1 405 840 0610

4700 S. Sunnyslane Road
Oklahoma City, OK 73135



DEMOGRAPHICS

Population		
1 Mile: 16,752	3 Mile: 59,019	5 Mile: 139,586
Average Household Income		
1 Mile: \$43,579	3 Mile: \$42,627	5 Mile: \$39,549
Total Households		
1 Mile: 6,308	3 Mile: 22,626	5 Mile: 54,188

LOCATION HIGHLIGHTS

- Dimensions: 240' x 276'
- Frontage: 276' on Sunnyslane
- Established Area with High Traffic

For more information:

Bob Sullivan, CCIM

Cell: 1 405 641 9798

rsullivan@ccim.net

www.naisullivangroup.com

NAI Sullivan Group

4045 N.W. 64th Street, Suite 340
Oklahoma City, Oklahoma 73116
Office: 1 405 840 0600
Fax: 1 405 840 0610