



2536 W. Lindley Avenue

Oklahoma City, Oklahoma 73107

PROPERTY HIGHLIGHTS

- Possible Re-Zoning to Industrial
- Water, Sewer & Gas Accessible
- Cleared & Ready to Build On
- Just North of I-40
- North from West Reno on Linn
- West from Villa on Lindley

LAND IN ACRES **0.6311 MOL**

ZONING **R-1**

2014 TAXES **\$378**

www.naisullivangroup.com

NO WARRANTY OR REPRESENTATION, EXPRESS OR IMPLIED, IS MADE AS TO THE ACCURACY OF THE INFORMATION CONTAINED HEREIN, AND THE SAME IS SUBMITTED SUBJECT TO ERRORS, OMISSIONS, CHANGE OF PRICE, RENTAL OR OTHER CONDITIONS, PRIOR SALE, LEASE OR FINANCING, OR WITHDRAWAL WITHOUT NOTICE, AND OF ANY SPECIAL LISTING CONDITIONS IMPOSED BY OUR PRINCIPALS NO WARRANTIES OR REPRESENTATIONS ARE MADE AS TO THE CONDITION OF THE PROPERTY OR ANY HAZARDS CONTAINED THEREIN ARE ANY TO BE IMPLIED.

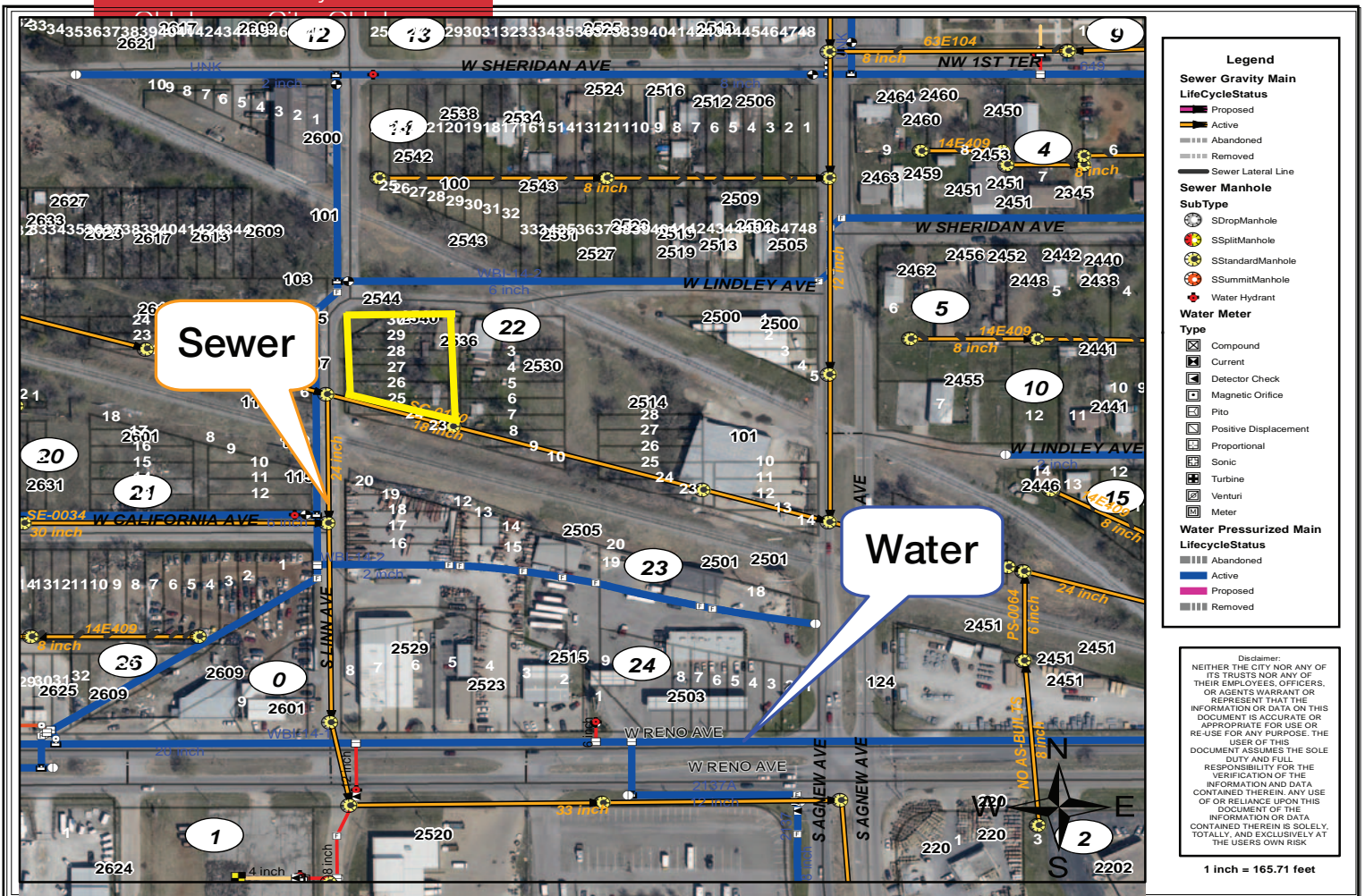
For more information:

Darryl Meason

Cell: 1 405 205 9440

darryl@naisullivangroup.com

4045 N.W. 64th Street, Suite 340
Oklahoma City, Oklahoma 73116
Office: 1 405 840 0600
Fax: 1 405 840 0610



DEMOGRAPHICS

Population

1 Mile: 2,580	3 Mile: 92,100	5 Mile: 232,444
-------------------------	--------------------------	---------------------------

Average Household Income

1 Mile: \$28,277	3 Mile: \$41,331	5 Mile: \$43,231
----------------------------	----------------------------	----------------------------

Total Households

1 Mile: 843	3 Mile: 33,546	5 Mile: 91,076
-----------------------	--------------------------	--------------------------

LOCATION HIGHLIGHTS

- Dimensions: 140' x 190'
- Frontage: 140' on W. Lindley Avenue

For more information:

Darryl Meason

Cell: 1 405 205 9440

darryl@naisullivangroup.com

www.naisullivangroup.com

NAISullivan Group

4045 N.W. 64th Street, Suite 340
 Oklahoma City, Oklahoma 73116
 Office: 1 405 840 0600
 Fax: 1 405 840 0610