

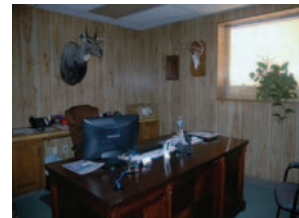


3901 S. Eastern

Oklahoma City, Oklahoma 73129

PROPERTY HIGHLIGHTS

- Just 1/2 Mile from I-35
- Fully Fenced Yard
- Hard Packed Gravel Yard
- Drive Thru 5,000 SF Shop
- Outside Wash Area
- 2,300 SF Office
- (3) 14' Grade Level Doors
- 15' Ceiling Height
- 200 Amp Power



TOTAL SF	7,300 SF MOL
LAND IN ACRES	2.4 MOL
ZONING	I-2
GENERAL USE	Industrial/Office
TAXES	\$7,085

www.naisullivangroup.com

NO WARRANTY OR REPRESENTATION, EXPRESS OR IMPLIED, IS MADE AS TO THE ACCURACY OF THE INFORMATION CONTAINED HEREIN, AND THE SAME IS SUBMITTED SUBJECT TO ERRORS, OMISSIONS, CHANGE OF PRICE, RENTAL OR OTHER CONDITIONS, PRIOR SALE, LEASE OR FINANCING, OR WITHDRAWAL WITHOUT NOTICE, AND OF ANY SPECIAL LISTING CONDITIONS IMPOSED BY OUR PRINCIPALS NO WARRANTIES OR REPRESENTATIONS ARE MADE AS TO THE CONDITION OF THE PROPERTY OR ANY HAZARDS CONTAINED THEREIN ARE ANY TO BE IMPLIED.

For more information:

Bob Sullivan, CCIM

Cell: 1 405 641 9798
rsullivan@ccim.net

4045 N.W. 64th Street, Suite 410
Oklahoma City, Oklahoma 73116
Office: 1 405 840 0600
Fax: 1 405 840 0610

3901 S. Eastern
Oklahoma City, OK 73129



DEMOGRAPHICS

Population

1 Mile:	3 Mile:	5 Mile:
4,243	68,982	204,188

Average Household Income

1 Mile:	3 Mile:	5 Mile:
\$29,527	\$33,792	\$36,914

Total Households

1 Mile:	3 Mile:	5 Mile:
1,486	25,368	76,894

LOCATION HIGHLIGHTS

- Dimensions: 400' x 270'
- Frontage: 400' on Eastern
- Sought After "Oil Patch" Area
- Similar Industrial Facilities in the Area
- Easy Access to I-35

For more information:

Bob Sullivan, CCIM

Cell: 1 405 641 9798

rsullivan@ccim.net

www.naisullivangroup.com

NAI Sullivan Group

4045 N.W. 64th Street, Suite 410
Oklahoma City, Oklahoma 73116
Office: 1 405 840 0600
Fax: 1 405 840 0610