



**6911 S.E. 15th Street**

Midwest City, Oklahoma 73110

## PROPERTY HIGHLIGHTS

- 0.64 Acres MOL
- C-3 Zoning
- Pad Opportunity
- Cross Parking
- Frontage on 15th Street

## LOCATION HIGHLIGHTS

- Dimensions: 130' x 217'
- Frontage: 130' on S.E. 15th Street
- Close Proximity to I-40
- N.E. of Rose State College
- Block West of Midwest City High School
- High Population Density

[www.naisullivangroup.com](http://www.naisullivangroup.com)

NO WARRANTY OR REPRESENTATION, EXPRESS OR IMPLIED, IS MADE AS TO THE ACCURACY OF THE INFORMATION CONTAINED HEREIN, AND THE SAME IS SUBMITTED SUBJECT TO ERRORS, OMISSIONS, CHANGE OF PRICE, RENTAL OR OTHER CONDITIONS, PRIOR SALE, LEASE OR FINANCING, OR WITHDRAWAL WITHOUT NOTICE, AND OF ANY SPECIAL LISTING CONDITIONS IMPOSED BY OUR PRINCIPALS NO WARRANTIES OR REPRESENTATIONS ARE MADE AS TO THE CONDITION OF THE PROPERTY OR ANY HAZARDS CONTAINED THEREIN ARE ANY TO BE IMPLIED.

**David Hartnack**

**Sam Swanson**

**Nathan Wilson**

David's Cell: 1 405 761 8955

Sam's Cell: 1 405 208 2046

Nathan's Cell: 1 405 760 5327

davidh@naisullivangroup.com

sam@naisullivangroup.com

nathan@naisullivangroup.com

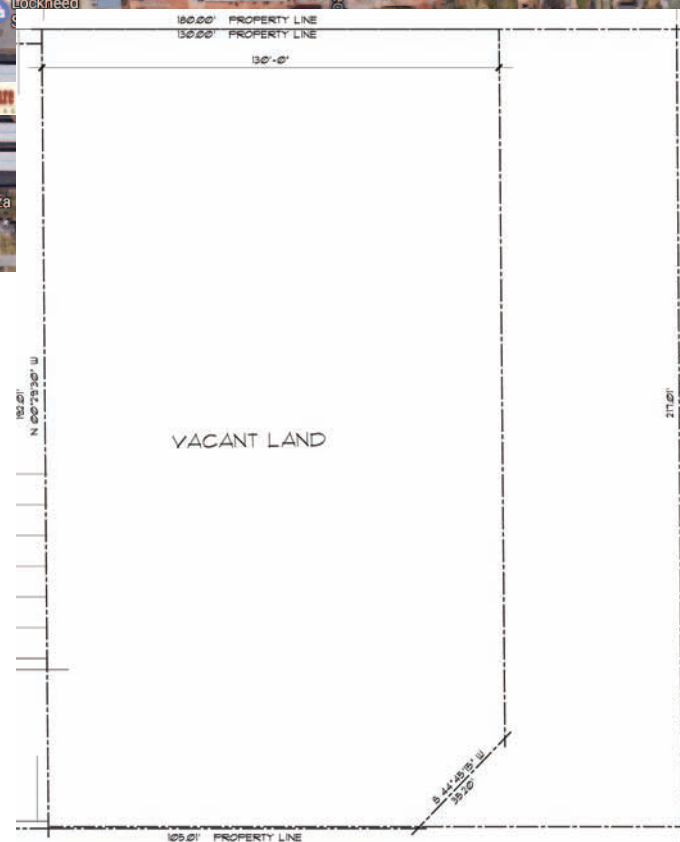
4045 N.W. 64th Street, Suite 340

Oklahoma City, Oklahoma 73116

Office: 1 405 840 0600



6911 S.E. 15th Street  
Midwest City, OK 73110



## DEMOGRAPHICS

### Population

1 Mile:	3 Mile:	5 Mile:
11,519	70,518	125,289

### Average Household Income

1 Mile:	3 Mile:	5 Mile:
\$48,402	\$53,109	\$54,374

### Total Households

1 Mile:	3 Mile:	5 Mile:
4,909	28,644	49,353

David Hartnack  
Sam Swanson  
Nathan Wilson

David's Cell: 1 405 761 8955  
Sam's Cell: 1 405 208 2046  
Nathan's Cell: 1 405 760 5327  
davidh@naisullivangroup.com  
sam@naisullivangroup.com  
nathan@naisullivangroup.com

[www.naisullivangroup.com](http://www.naisullivangroup.com)

4045 N.W. 64th Street, Suite 340  
Oklahoma City, Oklahoma 73116  
Office: 1 405 840 0600  
Fax: 1 405 840 0610

**NA**Sullivan Group