



2221 OK Highway 74

Purcell, Oklahoma 73080

PROPERTY HIGHLIGHTS

- Pylon Sign would be Visible from I-35
- Adjacent to Super Wal-Mart
- Same Exit as Taco Bell, McDonald's & Braums
- Fast Food/QSR Site

TOTAL ACRES

0.61 MOL

ZONING

Commercial

www.naisullivangroup.com

NO WARRANTY OR REPRESENTATION, EXPRESS OR IMPLIED, IS MADE AS TO THE ACCURACY OF THE INFORMATION CONTAINED HEREIN, AND THE SAME IS SUBMITTED SUBJECT TO ERRORS, OMISSIONS, CHANGE OF PRICE, RENTAL OR OTHER CONDITIONS, PRIOR SALE, LEASE OR FINANCING, OR WITHDRAWAL WITHOUT NOTICE, AND OF ANY SPECIAL LISTING CONDITIONS IMPOSED BY OUR PRINCIPALS NO WARRANTIES OR REPRESENTATIONS ARE MADE AS TO THE CONDITION OF THE PROPERTY OR ANY HAZARDS CONTAINED THEREIN ARE ANY TO BE IMPLIED.

For more information:

David Hartnack

Sam Swanson

David's Cell: 1 405 761 8955

Sam's Cell: 1 405 208 2046

davidh@naisullivangroup.com

sam@naisullivangroup.com

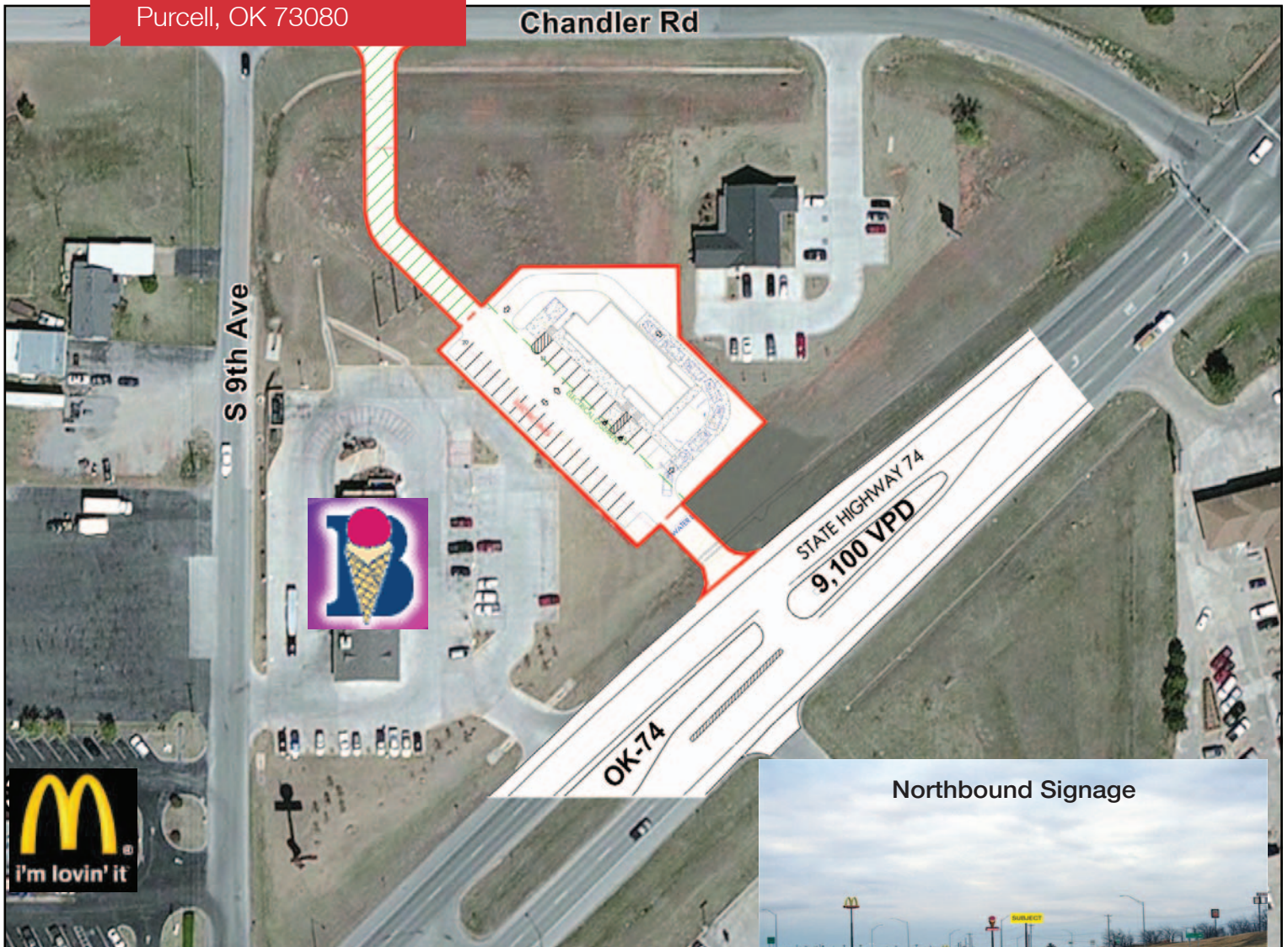
4045 N.W. 64th Street, Suite 340

Oklahoma City, Oklahoma 73116

Office: 1 405 840 0600

Fax: 1 405 840 0610

2221 OK Highway 74
Purcell, OK 73080



DEMOGRAPHICS

Population

1 Mile: 751	3 Mile: 7,632	5 Mile: 11,507
----------------	------------------	-------------------

Average Household Income

1 Mile: \$42,738	3 Mile: \$44,952	5 Mile: \$47,772
---------------------	---------------------	---------------------

Total Households

1 Mile: 278	3 Mile: 2,881	5 Mile: 4,333
----------------	------------------	------------------

For more information:

David Hartnack

Sam Swanson

David's Cell: 1 405 761 8955

Sam's Cell: 1 405 208 2046

davidh@naisullivangroup.com

sam@naisullivangroup.com

www.naisullivangroup.com

4045 N.W. 64th Street, Suite 340

Oklahoma City, Oklahoma 73116

Office: 1 405 840 0600

Fax: 1 405 840 0610

NASullivan Group