



## 225 N. Charles Avenue

Midwest City, Oklahoma 73130

### PROPERTY HIGHLIGHTS

- Residential Area
- Just East of Douglas Avenue
- New Construction in Area
- DaVita Dialysis Center across the Street
- Water & Sewer to Site

LAND IN ACRES      8.1 MOL

ZONING      Residential

GENERAL USE      Residential

2014 TAXES      \$500

For more information:

**Bob Sullivan, CCIM**

Cell: 1 405 641 9798

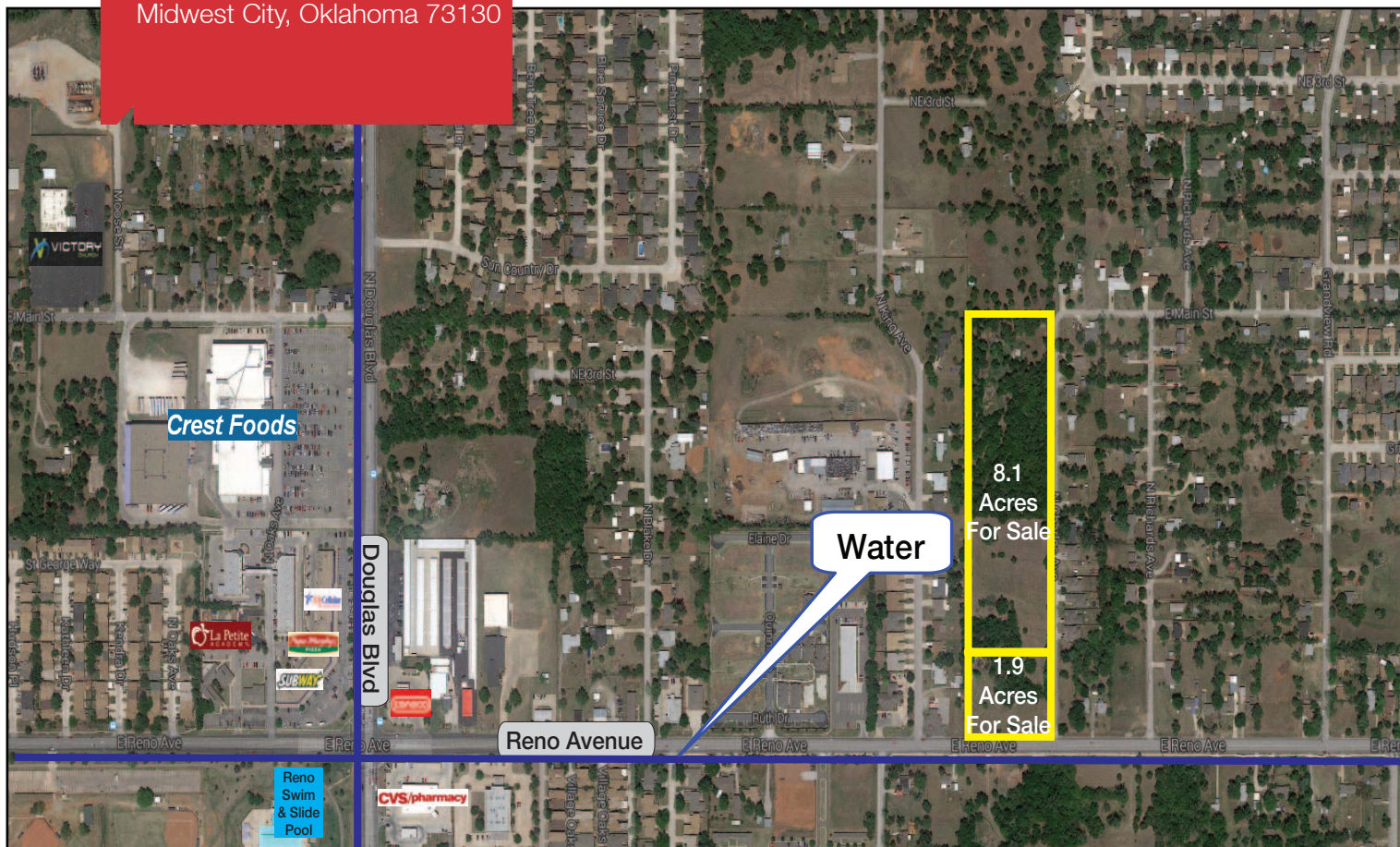
rsullivan@ccim.net

[www.naisullivangroup.com](http://www.naisullivangroup.com)

NO WARRANTY OR REPRESENTATION, EXPRESS OR IMPLIED, IS MADE AS TO THE ACCURACY OF THE INFORMATION CONTAINED HEREIN, AND THE SAME IS SUBMITTED SUBJECT TO ERRORS, OMISSIONS, CHANGE OF PRICE, RENTAL OR OTHER CONDITIONS, PRIOR SALE, LEASE OR FINANCING, OR WITHDRAWAL WITHOUT NOTICE, AND OF ANY SPECIAL LISTING CONDITIONS IMPOSED BY OUR PRINCIPALS NO WARRANTIES OR REPRESENTATIONS ARE MADE AS TO THE CONDITION OF THE PROPERTY OR ANY HAZARDS CONTAINED THEREIN ARE ANY TO BE IMPLIED.

4045 N.W. 64th Street, Suite 340  
Oklahoma City, Oklahoma 73116  
Office: 1 405 840 0600  
Fax: 1 405 840 0610

225 N. Charles Avenue  
Midwest City, Oklahoma 73130



## DEMOGRAPHICS

### Population

1 Mile: 7,099	3 Mile: 56,733	5 Mile: 93,474
------------------	-------------------	-------------------

### Average Household Income

1 Mile: \$53,967	3 Mile: \$42,440	5 Mile: \$42,710
---------------------	---------------------	---------------------

### Total Households

1 Mile: 2,878	3 Mile: 23,324	5 Mile: 37,988
------------------	-------------------	-------------------

## LOCATION HIGHLIGHTS

- Dimensions: 1037' x 330'
- Frontage: 1037' on Charles Avenue
- Growing Area of Midwest City

For more information:

**Bob Sullivan, CCIM**

Cell: 1 405 641 9798

rsullivan@ccim.net

[www.naisullivangroup.com](http://www.naisullivangroup.com)

**NA**Sullivan Group

4045 N.W. 64th Street, Suite 340  
Oklahoma City, Oklahoma 73116  
Office: 1 405 840 0600  
Fax: 1 405 840 0610