



## N.E. 23rd Street & Triple X Road

Choctaw, Oklahoma 73020

### PROPERTY HIGHLIGHTS

- Corner of N.E. 23rd Street & Triple X Road
- Level Terrain
- Zoned Commercial

TOTAL SF	871,200 SF MOL
ZONING	General Commercial
LAND IN ACRES	20 MOL
GENERAL USE	Retail, Commercial

[www.naisullivangroup.com](http://www.naisullivangroup.com)

NO WARRANTY OR REPRESENTATION, EXPRESS OR IMPLIED, IS MADE AS TO THE ACCURACY OF THE INFORMATION CONTAINED HEREIN, AND THE SAME IS SUBMITTED SUBJECT TO ERRORS, OMISSIONS, CHANGE OF PRICE, RENTAL OR OTHER CONDITIONS, PRIOR SALE, LEASE OR FINANCING, OR WITHDRAWAL WITHOUT NOTICE, AND OF ANY SPECIAL LISTING CONDITIONS IMPOSED BY OUR PRINCIPALS NO WARRANTIES OR REPRESENTATIONS ARE MADE AS TO THE CONDITION OF THE PROPERTY OR ANY HAZARDS CONTAINED THEREIN ARE ANY TO BE IMPLIED.

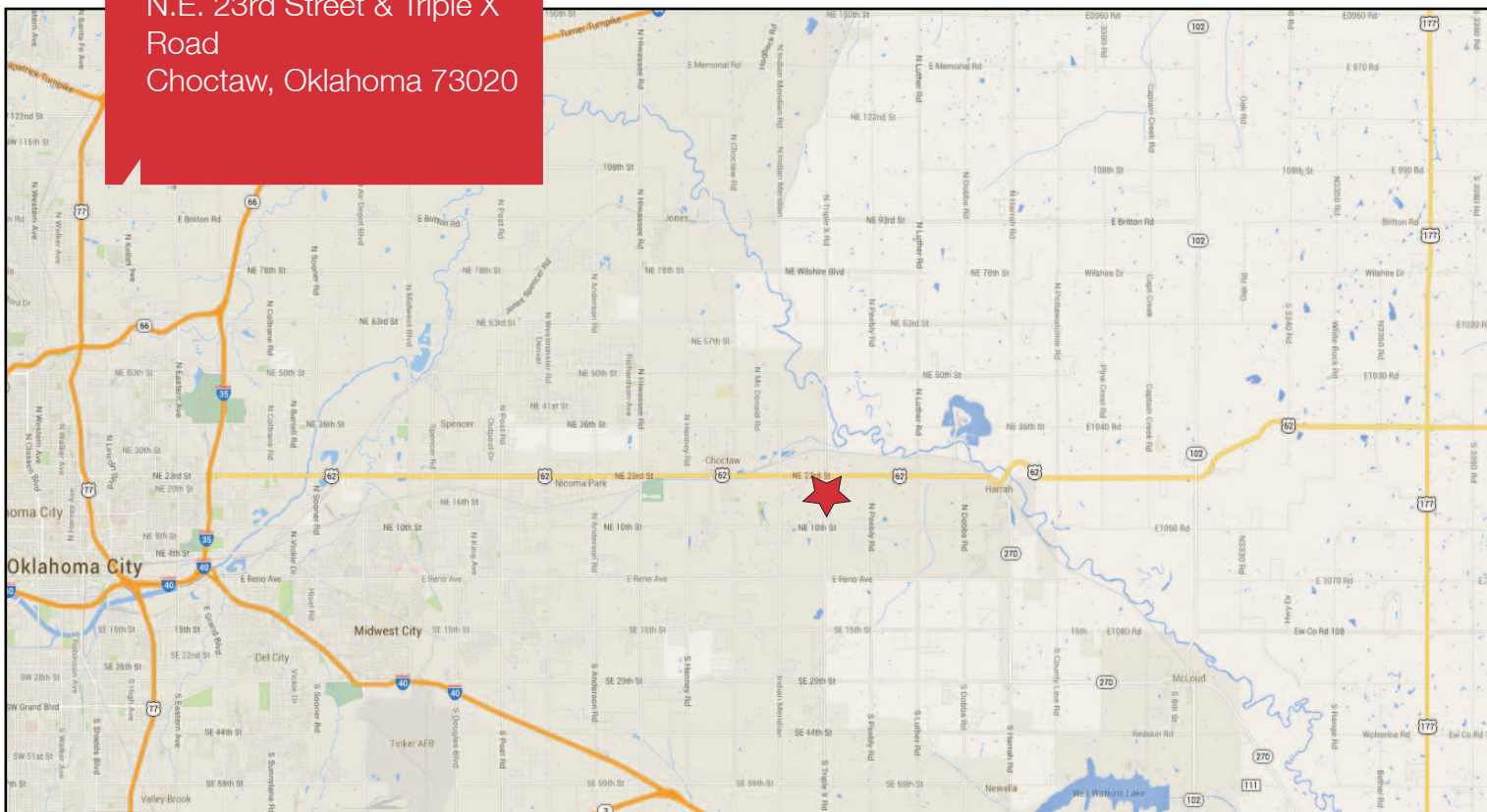
For more information:

**Bob Sullivan, CCIM**

Cell: 1 405 641 9798  
rsullivan@ccim.net

4045 N.W. 64th Street, Suite 340  
Oklahoma City, Oklahoma 73116  
Office: 1 405 840 0600  
Fax: 1 405 840 0610

N.E. 23rd Street & Triple X Road  
Choctaw, Oklahoma 73020



## DEMOGRAPHICS

### Population

<b>1 Mile:</b> 860	<b>3 Mile:</b> 8,928	<b>5 Mile:</b> 23,719
-----------------------	-------------------------	--------------------------

### Average Household Income

<b>1 Mile:</b> \$75,941	<b>3 Mile:</b> \$72,569	<b>5 Mile:</b> \$73,896
----------------------------	----------------------------	----------------------------

### Total Households

<b>1 Mile:</b> 344	<b>3 Mile:</b> 3,338	<b>5 Mile:</b> 8,999
-----------------------	-------------------------	-------------------------

## LOCATION HIGHLIGHTS

- Dimensions: 655' x 1320'
- Frontage: 655' on N.E. 23rd Street
- Choctaw City Limits
- Heavily Traveled N.E. 23rd Street

For more information:

**Bob Sullivan, CCIM**

Cell: 1 405 641 9798  
rsullivan@ccim.net

[www.naisullivangroup.com](http://www.naisullivangroup.com)

**NAISullivan Group**

4045 N.W. 64th Street, Suite 340  
Oklahoma City, Oklahoma 73116  
Office: 1 405 840 0600  
Fax: 1 405 840 0610