

Office Land For Sale

1.1 Acres

Sales Price: \$2.75/SF
(\$119,790/Acre)



4245 24th Avenue N.W.

Norman, Oklahoma 73069

PROPERTY HIGHLIGHTS

- Located on Hard Corner
- Additional Land Available on Harriet Road
- Not in Flood Zone
- West of Victory Family Church
- Utilities Across the Street
- Located in N.W. Norman
- Near I-35 & Highway 77
- Norman School District

LAND IN ACRES	1.1 ACRES MOL
ZONING	O-1 Office, Institution or Special High Impact (Lockdown)
TAXES	\$25.24

www.naisullivangroup.com

Amanda Sullivan

Cell: 1 405 323 6423
amanda@naisullivangroup.com

4045 N.W. 64th Street, Suite 340
Oklahoma City, Oklahoma 73116
Office: 1 405 840 0600
Fax: 1 405 840 0610

NO WARRANTY OR REPRESENTATION, EXPRESS OR IMPLIED, IS MADE AS TO THE ACCURACY OF THE INFORMATION CONTAINED HEREIN, AND THE SAME IS SUBMITTED SUBJECT TO ERRORS, OMISSIONS, CHANGE OF PRICE, RENTAL OR OTHER CONDITIONS, PRIOR SALE, LEASE OR FINANCING, OR WITHDRAWAL WITHOUT NOTICE, AND OF ANY SPECIAL LISTING CONDITIONS IMPOSED BY OUR PRINCIPALS NO WARRANTIES OR REPRESENTATIONS ARE MADE AS TO THE CONDITION OF THE PROPERTY OR ANY HAZARDS CONTAINED THEREIN ARE ANY TO BE IMPLIED.

4245 24th Avenue N.W.
Norman, OK 73069

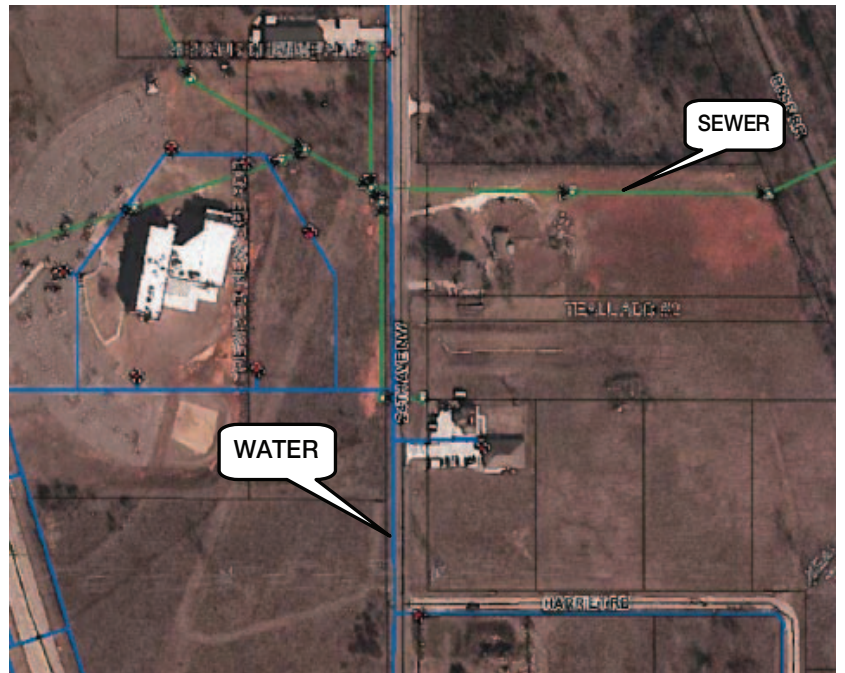


LOCATION HIGHLIGHTS

- Dimensions: Irregular
- Frontage: 205' on 24th Avenue N.W.
- Near Norman Regional Hospital
- Strong Commercial Development Area
- Numerous Restaurants, National Retailers, Quality Hotels & Auto Dealerships
- Quality Housing Additions in the Area

DEMOGRAPHICS

Population		
1 Mile: 240	3 Mile: 31,175	5 Mile: 112,427
Average Household Income		
1 Mile: \$112,719	3 Mile: \$98,818	5 Mile: \$78,697
Total Households		
1 Mile: 77	3 Mile: 11,782	5 Mile: 43,341



Amanda Sullivan

Cell: 1 405 323 6423

amanda@naisullivangroup.com

www.naisullivangroup.com

4045 N.W. 64th Street, Suite 340
Oklahoma City, Oklahoma 73116
Office: 1 405 840 0600
Fax: 1 405 840 0610

NASullivan Group