



306 W. Juneau Street

Purcell, Oklahoma 73080

PROPERTY HIGHLIGHTS

- 104,681 SF Distribution Warehouse Facility
- Great Access to I-35
- Pre-Engineered Steel Open Construction
- Lots of Room for Parking and Expansion
- Ideal for Manufacturing or Distribution Center
- (4) Dock High Doors
- (7) Grade Level Doors
- 16' Clear Ceiling Height
- 480 Volt Power
- Fenced Yard
- Built in 1977



TOTAL SF	104,681 SF MOL
LAND IN ACRES	12.72 MOL
ZONING	Industrial
GENERAL USE	Industrial
2016 TAXES	\$7,921

www.naisullivangroup.com

NO WARRANTY OR REPRESENTATION, EXPRESS OR IMPLIED, IS MADE AS TO THE ACCURACY OF THE INFORMATION CONTAINED HEREIN, AND THE SAME IS SUBMITTED SUBJECT TO ERRORS, OMISSIONS, CHANGE OF PRICE, RENTAL OR OTHER CONDITIONS, PRIOR SALE, LEASE OR FINANCING, OR WITHDRAWAL WITHOUT NOTICE, AND OF ANY SPECIAL LISTING CONDITIONS IMPOSED BY OUR PRINCIPALS NO WARRANTIES OR REPRESENTATIONS ARE MADE AS TO THE CONDITION OF THE PROPERTY OR ANY HAZARDS CONTAINED THEREIN ARE ANY TO BE IMPLIED.

For more information:

Irmon Gray

Darryl Meason

Irmon's Cell: 1 405 474 7286

Darryl's Cell: 1 405 205 9440

irmon@naisullivangroup.com

darryl@naisullivangroup.com

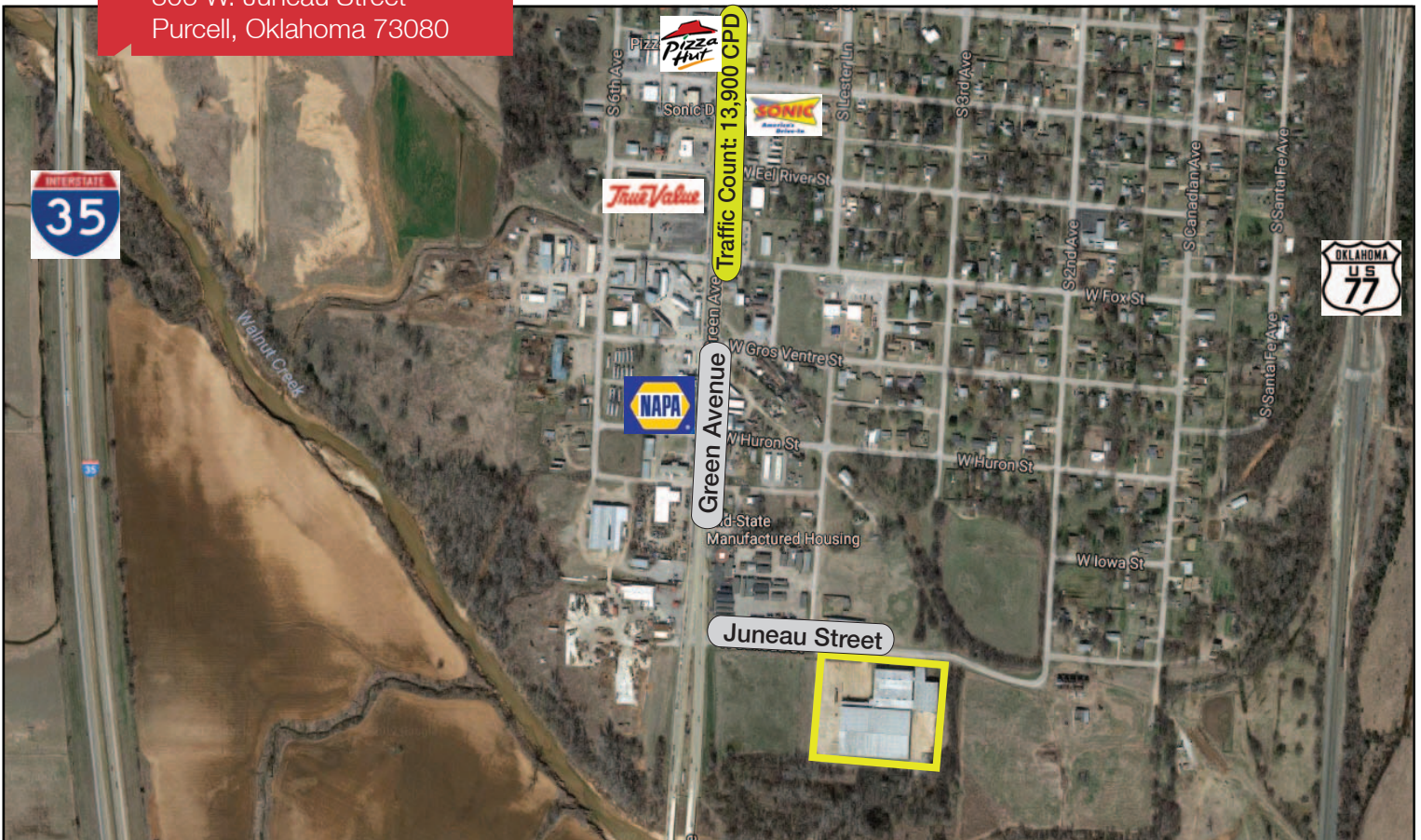
4045 N.W. 64th Street, Suite 340

Oklahoma City, Oklahoma 73116

Office: 1 405 840 0600

Fax: 1 405 840 0610

306 W. Juneau Street
Purcell, Oklahoma 73080



DEMOGRAPHICS

Population

1 Mile:	3 Mile:	5 Mile:
2,042	9,018	11,648

Average Household Income

1 Mile:	3 Mile:	5 Mile:
\$44,163	\$46,773	\$48,261

Total Households

1 Mile:	3 Mile:	5 Mile:
772	3,395	4,392

LOCATION HIGHLIGHTS

- Located in Purcell, Just South of Norman and Oklahoma City

For more information:

Irmon Gray
Darryl Meason

Irmon's Cell: 1 405 474 7286
Darryl's Cell: 1 405 205 9440
irmon@naisullivangroup.com
darryl@naisullivangroup.com

www.naisullivangroup.com

4045 N.W. 64th Street, Suite 340
Oklahoma City, Oklahoma 73116
Office: 1 405 840 0600
Fax: 1 405 840 0610

NAI Sullivan Group