



3217 S.W. 89th Street

Oklahoma City, Oklahoma 73159

PROPERTY HIGHLIGHTS

- 4.4 Acres MOL C-3 Zoned Land For Sale
- High Traffic, High Visibility Location
- 220' of Frontage on S.W. 89th Street

ZONING	C-3
LAND IN ACRES	4.4 MOL
GENERAL USE	Commercial
TAXES	\$10,262

www.naisullivangroup.com

NO WARRANTY OR REPRESENTATION, EXPRESS OR IMPLIED, IS MADE AS TO THE ACCURACY OF THE INFORMATION CONTAINED HEREIN, AND THE SAME IS SUBMITTED SUBJECT TO ERRORS, OMISSIONS, CHANGE OF PRICE, RENTAL OR OTHER CONDITIONS, PRIOR SALE, LEASE OR FINANCING, OR WITHDRAWAL WITHOUT NOTICE, AND OF ANY SPECIAL LISTING CONDITIONS IMPOSED BY OUR PRINCIPALS NO WARRANTIES OR REPRESENTATIONS ARE MADE AS TO THE CONDITION OF THE PROPERTY OR ANY HAZARDS CONTAINED THEREIN ARE ANY TO BE IMPLIED.

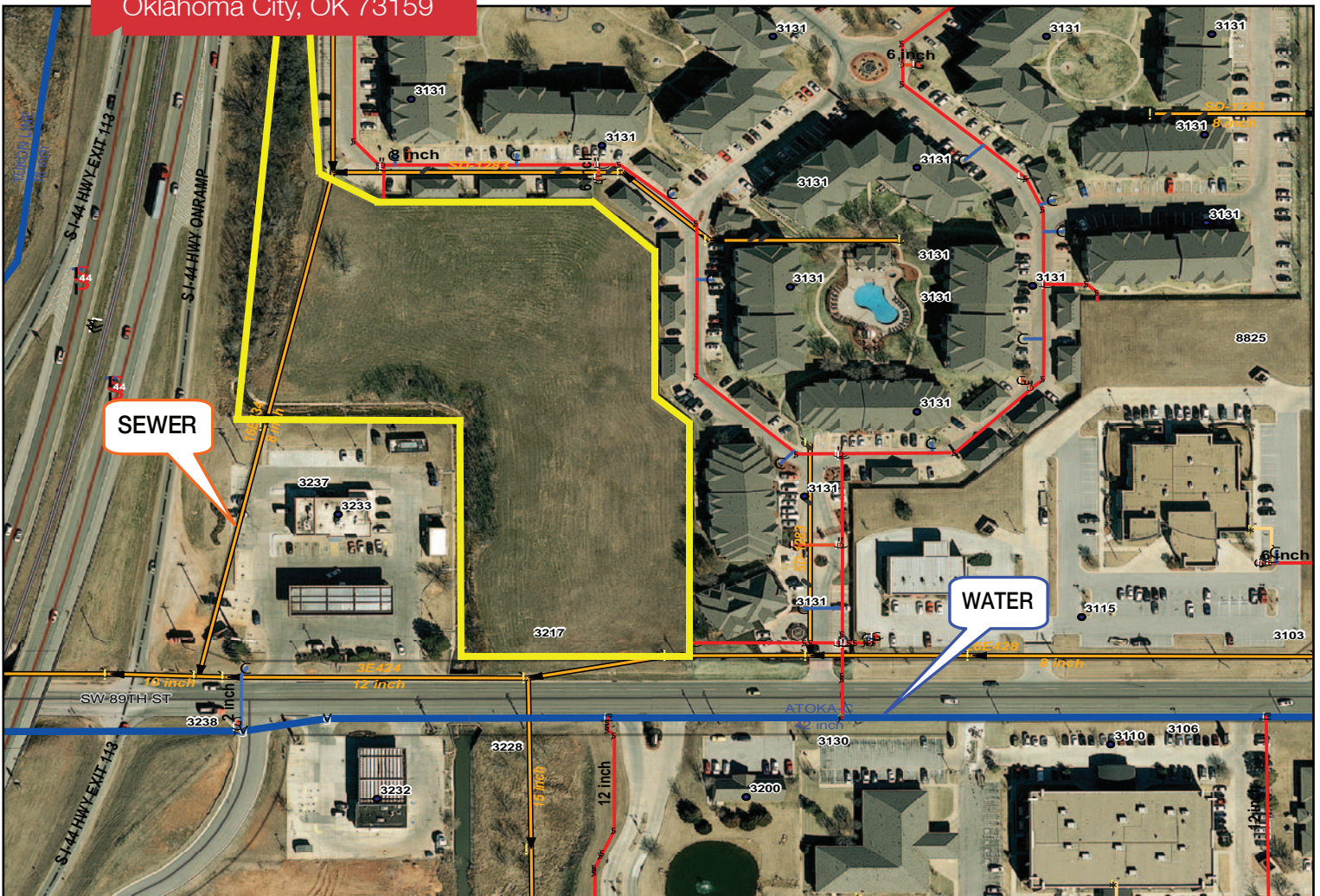
For more information:

Darryl Meason

Cell: 1 405 205 9440
darryl@naisullivangroup.com

4045 N.W. 64th Street, Suite 340
Oklahoma City, Oklahoma 73116
Office: 1 405 840 0600
Fax: 1 405 840 0610

3217 S.W. 89th Street
Oklahoma City, OK 73159



DEMOGRAPHICS

Population

1 Mile:	3 Mile:	5 Mile:
9,713	73,136	177,765

Average Household Income

1 Mile:	3 Mile:	5 Mile:
\$59,631	\$63,335	\$58,634

Total Households

1 Mile:	3 Mile:	5 Mile:
4,065	27,651	64,588

LOCATION HIGHLIGHTS

- Dimensions: Irregular
- Next to Love's at S.W. 89th Street & I-44
- Lots of Rooftops
- Close to 4 Large Apartment Complexes
- Near Doctors & Hospitals

For more information:

Darryl Meason

Cell: 1 405 205 9440
darryl@naisullivangroup.com

www.naisullivangroup.com

NAI Sullivan Group

4045 N.W. 64th Street, Suite 340
Oklahoma City, Oklahoma 73116
Office: 1 405 840 0600
Fax: 1 405 840 0610