

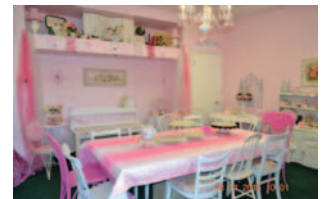


## 6644 N.W. 39th Expressway

Bethany, Oklahoma 73008

### PROPERTY HIGHLIGHTS

- 46' of Frontage on 39th Expressway
- Curbside Parking & Additional Parking in Back of Building
- High Visibility
- 1-2 Car Garage with an Overhead Door
- Large Storefront Windows
- French Doors
- High Ceilings
- Great Location for Retail or Office
- Breakroom
- Storage Area



TOTAL SF	4,082 SF MOL
ZONING	CBD
LAND IN ACRES	0.1473 MOL
GENERAL USE	Retail/Office
TAXES	\$2,783.31

For more information:

**Amanda Sullivan**

Cell: 1 405 323 6423  
 amanda@sullivangroup.com

4045 N.W. 64th Street, Suite 340  
 Oklahoma City, Oklahoma 73116  
 Office: 1 405 840 0600  
 Fax: 1 405 840 0610

[www.naisullivangroup.com](http://www.naisullivangroup.com)

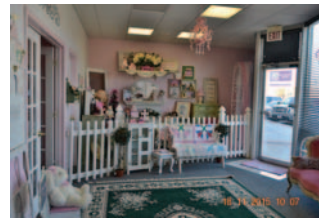
NO WARRANTY OR REPRESENTATION, EXPRESS OR IMPLIED, IS MADE AS TO THE ACCURACY OF THE INFORMATION CONTAINED HEREIN, AND THE SAME IS SUBMITTED SUBJECT TO ERRORS, OMISSIONS, CHANGE OF PRICE, RENTAL OR OTHER CONDITIONS, PRIOR SALE, LEASE OR FINANCING, OR WITHDRAWAL WITHOUT NOTICE, AND OF ANY SPECIAL LISTING CONDITIONS IMPOSED BY OUR PRINCIPALS NO WARRANTIES OR REPRESENTATIONS ARE MADE AS TO THE CONDITION OF THE PROPERTY OR ANY HAZARDS CONTAINED THEREIN ARE ANY TO BE IMPLIED.

6644 N.W. 39th Expressway  
Bethany, OK 73008



## LOCATION HIGHLIGHTS

- Dimensions: 97' x 46'
- Located Across the Street from Southern Nazarene University with 1,656 Undergraduates & 454 Postgraduates
- Located in Downtown Bethany
- On Historic Route 66



## DEMOGRAPHICS

Population		
1 Mile: 13,147	3 Mile: 95,137	5 Mile: 186,580
Average Household Income		
1 Mile: \$39,015	3 Mile: \$39,243	5 Mile: \$43,753
Total Households		
1 Mile: 5,118	3 Mile: 39,411	5 Mile: 78,678

For more information:

**Amanda Sullivan**

Cell: 1 405 323 6423  
amanda@naisullivangroup.com

[www.naisullivangroup.com](http://www.naisullivangroup.com)

**NAI Sullivan Group**

4045 N.W. 64th Street, Suite 340  
Oklahoma City, Oklahoma 73116  
Office: 1 405 840 0600  
Fax: 1 405 840 0610