



2300 S. Douglas Avenue
Midwest City, Oklahoma 73130

PROPERTY HIGHLIGHTS

- Solid Brick Construction
- Medical Building
- Currently Used for MRI

TOTAL SF	2,987 SF MOL
LAND IN ACRES	1.84 MOL
ZONING	PUD, PC 702 <small>(Restricted Commercial Governed by C-1)</small>
GENERAL USE	Office
TAXES	\$6,850.99
PARKING RATIO	6.67/1,000 SF
BUILT	2001

www.naisullivangroup.com

NO WARRANTY OR REPRESENTATION, EXPRESS OR IMPLIED, IS MADE AS TO THE ACCURACY OF THE INFORMATION CONTAINED HEREIN, AND THE SAME IS SUBMITTED SUBJECT TO ERRORS, OMISSIONS, CHANGE OF PRICE, RENTAL OR OTHER CONDITIONS, PRIOR SALE, LEASE OR FINANCING, OR WITHDRAWAL WITHOUT NOTICE, AND OF ANY SPECIAL LISTING CONDITIONS IMPOSED BY OUR PRINCIPALS NO WARRANTIES OR REPRESENTATIONS ARE MADE AS TO THE CONDITION OF THE PROPERTY OR ANY HAZARDS CONTAINED THEREIN ARE ANY TO BE IMPLIED.

For more information:

Nicole Mayes

Cell: 1 405 209 3992

nicole@naisullivangroup.com

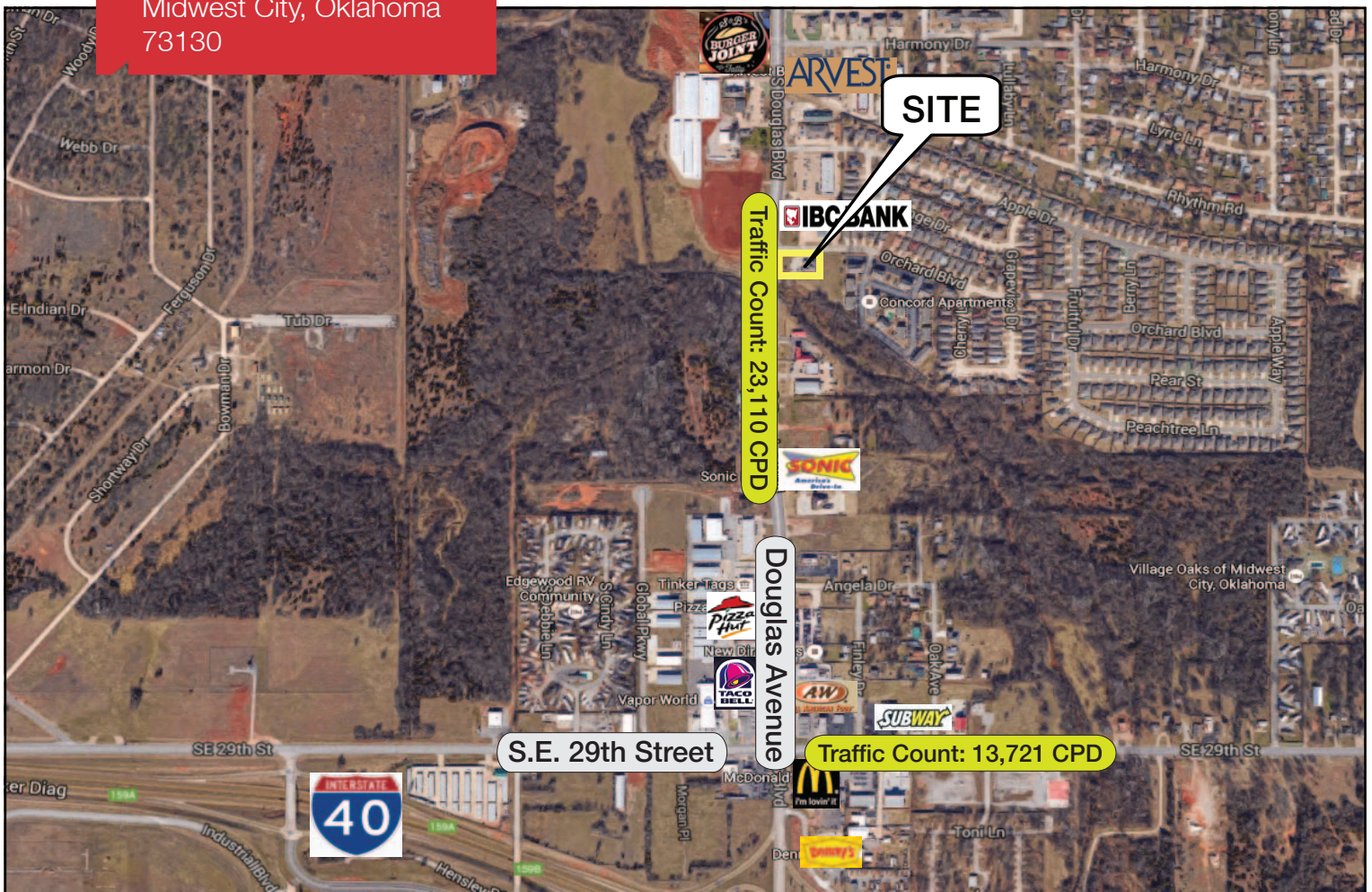
4045 N.W. 64th Street, Suite 340

Oklahoma City, Oklahoma 73116

Office: 1 405 840 0600

Fax: 1 405 840 0610

2300 S. Douglas Avenue
Midwest City, Oklahoma
73130



DEMOGRAPHICS

Population

1 Mile:	3 Mile:	5 Mile:
4,761	49,512	109,354

Average Household Income

1 Mile:	3 Mile:	5 Mile:
\$53,020	\$45,875	\$45,285

Total Households

1 Mile:	3 Mile:	5 Mile:
1,987	20,309	43,946

LOCATION HIGHLIGHTS

- Dimensions: 235' x 310'
- Just North of Tinker Air Force Base
- Easy Access to I-40
- Near Rose State College

For more information:

Nicole Mayes

Cell: 1 405 209 3992

nicole@naisullivangroup.com

www.naisullivangroup.com

NASullivan Group

4045 N.W. 64th Street, Suite 340
Oklahoma City, Oklahoma 73116
Office: 1 405 840 0600
Fax: 1 405 840 0610