



800 W. 15th Street



820 W. 15th Street

800 & 820 W. 15th Street

Edmond, Oklahoma 73013

PROPERTY HIGHLIGHTS

- 800 W. 15th Street: 7,780 SF & 0.75 Acres MOL
 - Interior Finish to Suit
- 820 W. 15th Street: 7,158 SF & 1.59 Acres MOL
 - Medical Space
 - Brick Construction
 - Fully Landscaped
 - Large Reception Area
 - 12 Exam Rooms
 - Lab
 - 8 Private Offices



820 W. 15th Street



800 W. 15th Street



TOTAL SF	14,938 SF MOL
TOTAL ACRES	2.34 ACRES MOL
ZONING	Commercial
GENERAL USE	Office
PARKING RATIO	800 W. 15th: 3.3/1,000 SF 820 W. 15th: 7.7/1,000 SF

www.naisullivangroup.com

NO WARRANTY OR REPRESENTATION, EXPRESS OR IMPLIED, IS MADE AS TO THE ACCURACY OF THE INFORMATION CONTAINED HEREIN, AND THE SAME IS SUBMITTED SUBJECT TO ERRORS, OMISSIONS, CHANGE OF PRICE, RENTAL OR OTHER CONDITIONS, PRIOR SALE, LEASE OR FINANCING, OR WITHDRAWAL WITHOUT NOTICE, AND OF ANY SPECIAL LISTING CONDITIONS IMPOSED BY OUR PRINCIPALS NO WARRANTIES OR REPRESENTATIONS ARE MADE AS TO THE CONDITION OF THE PROPERTY OR ANY HAZARDS CONTAINED THEREIN ARE ANY TO BE IMPLIED.

For more information:

Bob Sullivan, CCIM

Amanda Sullivan

Bob's Cell: 1 405 641 9798

Amanda's Cell: 1 405 323 6423

rsullivan@ccim.net

amanda@naisullivangroup.com

4045 N.W. 64th Street, Suite 340

Oklahoma City, Oklahoma 73116

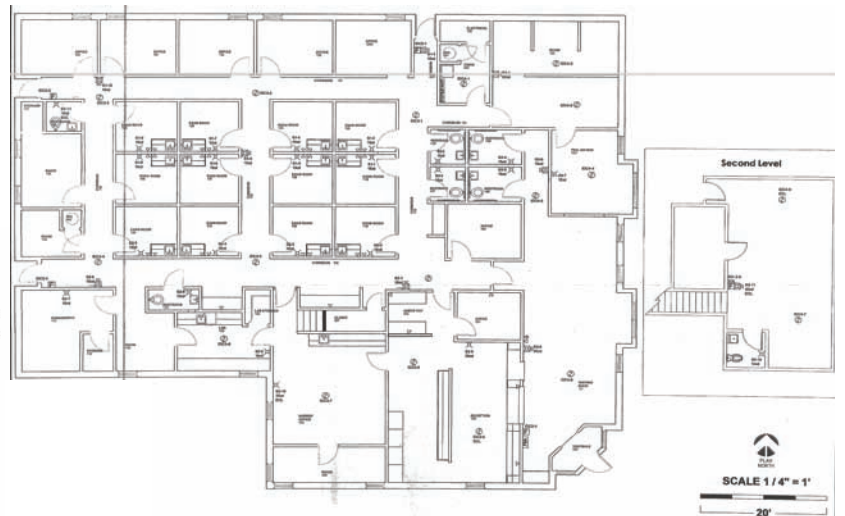
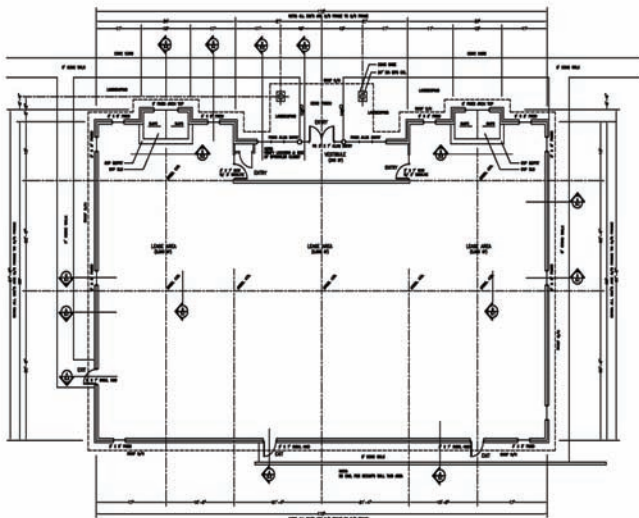
Office: 1 405 840 0600

Fax: 1 405 840 0610

800 & 820 W. 15th Street
Edmond, Oklahoma
73013



800 W. 15th Street



820 W. 15th Street

Bob Sullivan, CCIM

Amanda Sullivan

Bob's Cell: 1 405 641 9798

Amanda's Cell: 1 405 323 6423

rsullivan@ccim.net

amanda@naisullivangroup.com

www.naisullivangroup.com

NAI Sullivan Group

4045 N.W. 64th Street, Suite 340

Oklahoma City, Oklahoma 73116

Office: 1 405 840 0600

Fax: 1 405 840 0610