



3627 N.W. Expressway

Oklahoma City, Oklahoma 73112

PROPERTY HIGHLIGHTS

- Adjacent to Gold's Gym & Buy For Less
- Clean, Attractive Center
- Busy Cross Traffic from Neighboring Tenants
- Frontage on N.W. Expressway

SUITES AVAILABLE

- 3627: 3,750 SF



TOTAL SF	53,842 SF MOL
LAND IN ACRES	4.65 MOL
ZONING	C-3
GENERAL USE	Retail

www.naisullivangroup.com

NO WARRANTY OR REPRESENTATION, EXPRESS OR IMPLIED, IS MADE AS TO THE ACCURACY OF THE INFORMATION CONTAINED HEREIN, AND THE SAME IS SUBMITTED SUBJECT TO ERRORS, OMISSIONS, CHANGE OF PRICE, RENTAL OR OTHER CONDITIONS, PRIOR SALE, LEASE OR FINANCING, OR WITHDRAWAL WITHOUT NOTICE, AND OF ANY SPECIAL LISTING CONDITIONS IMPOSED BY OUR PRINCIPALS NO WARRANTIES OR REPRESENTATIONS ARE MADE AS TO THE CONDITION OF THE PROPERTY OR ANY HAZARDS CONTAINED THEREIN ARE ANY TO BE IMPLIED.

For more information:

David Hartnack

Sam Swanson

David's Cell: 1 405 761 8955

Sam's Cell: 1 405 208 2046

davidh@naisullivangroup.com

sam@naisullivangroup.com

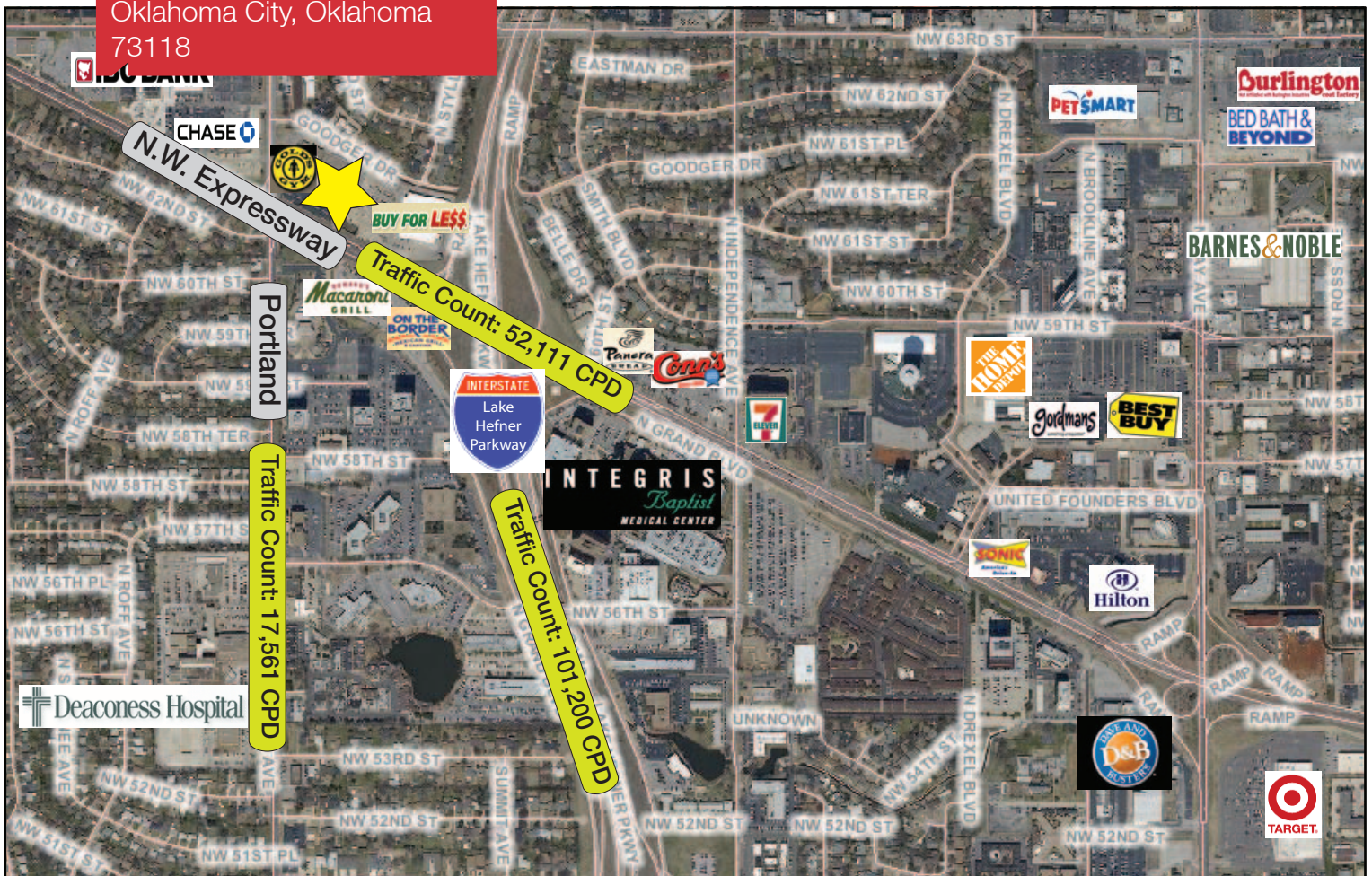
4045 N.W. 64th Street, Suite 340

Oklahoma City, Oklahoma 73116

Office: 1 405 840 0600

Fax: 1 405 840 0610

3627 N.W. Expressway
Oklahoma City, Oklahoma
73118



DEMOGRAPHICS

Population

1 Mile: 10,519	3 Mile: 91,931	5 Mile: 245,837
-------------------	-------------------	--------------------

Average Household Income

1 Mile: \$43,400	3 Mile: \$42,780	5 Mile: \$40,751
---------------------	---------------------	---------------------

Total Households

1 Mile: 5,015	3 Mile: 41,367	5 Mile: 107,544
------------------	-------------------	--------------------

LOCATION HIGHLIGHTS

- High Visibility Location Right Off Lake Hefner Parkway
- Traffic Count: 52,111 CPD on N.W. Expressway
- Traffic Count: 17,561 CPD on Portland
- Traffic Count: 101,200 CPD on Lake Hefner Parkway

For more information:

David Hartnack
Sam Swanson

David's Cell: 1 405 761 8955
Sam's Cell: 1 405 208 2046
davidh@naisullivangroup.com
sam@naisullivangroup.com

www.naisullivangroup.com

4045 N.W. 64th Street, Suite 340
Oklahoma City, Oklahoma 73116
Office: 1 405 840 0600
Fax: 1 405 840 0610

NAISullivan Group