



## Town & Country Mobile Home Park 20160 Harrison Road

Tecumseh, Oklahoma 74873

### PROPERTY HIGHLIGHTS

- (24) Space Mobile Home Park
- 20 Acres MOL
- Includes (2) Rented Adjacent Residences
- Includes Rented Shop Building
- Includes (4) Rented RV's



TOTAL SF/ACRES	20 ACRES MOL
ZONING	AGRICULTURAL
2013 TAXES	\$2,767
NOI 2014 Annualized	\$42,764
CAP RATE	10.8%
OCCUPANCY	95%

[www.naisullivangroup.com](http://www.naisullivangroup.com)

NO WARRANTY OR REPRESENTATION, EXPRESS OR IMPLIED, IS MADE AS TO THE ACCURACY OF THE INFORMATION CONTAINED HEREIN, AND THE SAME IS SUBMITTED SUBJECT TO ERRORS, OMISSIONS, CHANGE OF PRICE, RENTAL OR OTHER CONDITIONS, PRIOR SALE, LEASE OR FINANCING, OR WITHDRAWAL WITHOUT NOTICE, AND OF ANY SPECIAL LISTING CONDITIONS IMPOSED BY OUR PRINCIPALS NO WARRANTIES OR REPRESENTATIONS ARE MADE AS TO THE CONDITION OF THE PROPERTY OR ANY HAZARDS CONTAINED THEREIN ARE ANY TO BE IMPLIED.

For more information:

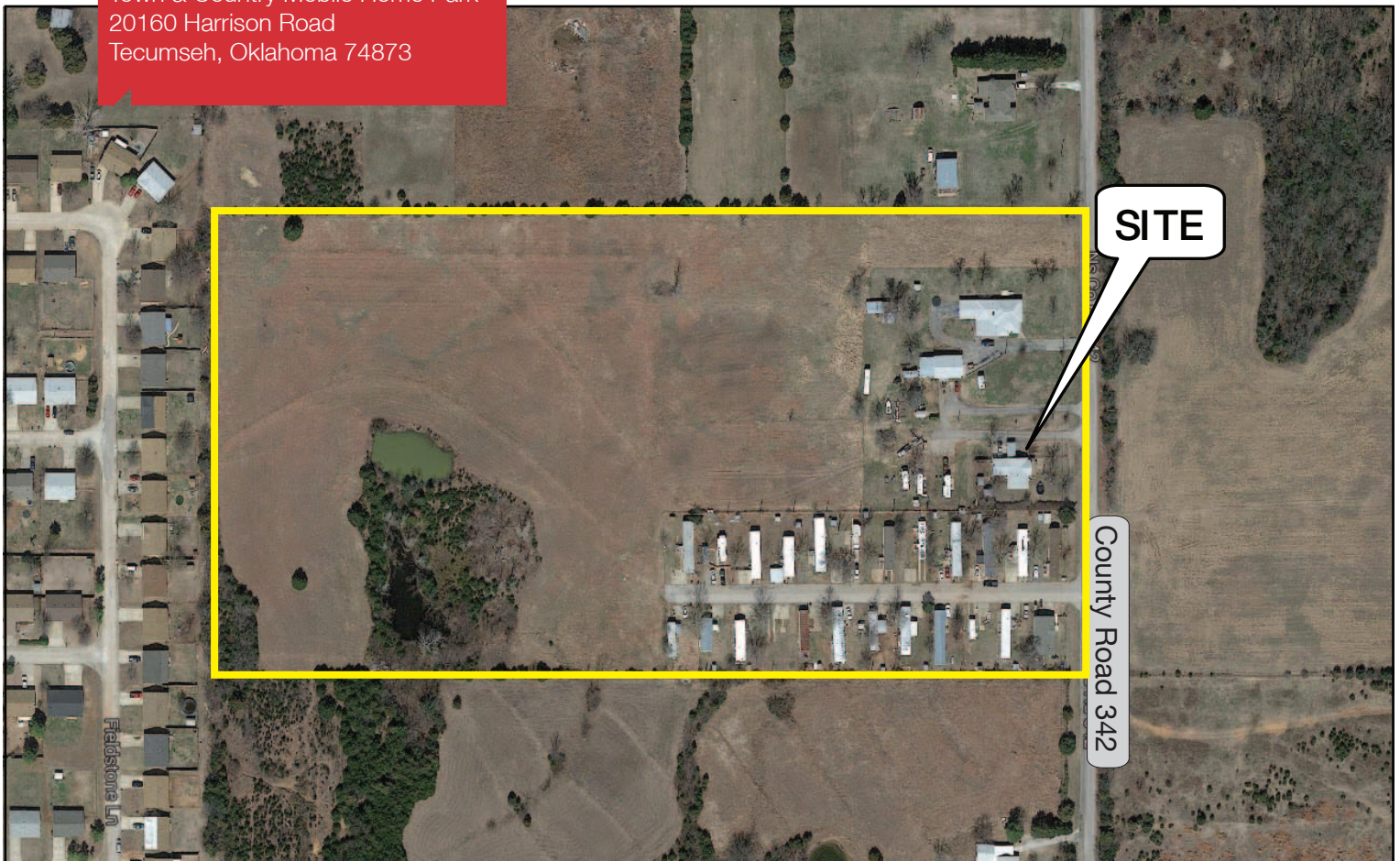
**Darryl Meason**

Cell: 1 405 205 9440

[darryl@naisullivangroup.com](mailto:darryl@naisullivangroup.com)

4045 N.W. 64th Street, Suite 340  
Oklahoma City, Oklahoma 73116  
Office: 1 405 840 0600  
Fax: 1 405 840 0610

Town & Country Mobile Home Park  
20160 Harrison Road  
Tecumseh, Oklahoma 74873



## DEMOGRAPHICS

### Population

1 Mile: 1,463	3 Mile: 7,650	5 Mile: 24,759
------------------	------------------	-------------------

### Average Household Income

1 Mile: \$41,973	3 Mile: \$46,692	5 Mile: \$42,523
---------------------	---------------------	---------------------

### Total Households

1 Mile: 539	3 Mile: 2,841	5 Mile: 9,459
----------------	------------------	------------------

## LOCATION HIGHLIGHTS

- 10 Minutes South of Shawnee
- 40 Minutes East of Oklahoma City

For more information:

**Darryl Meason**

Cell: 1 405 205 9440

darryl@naisullivangroup.com

[www.naisullivangroup.com](http://www.naisullivangroup.com)

**NAI Sullivan Group**

4045 N.W. 64th Street, Suite 340  
Oklahoma City, Oklahoma 73116  
Office: 1 405 840 0600  
Fax: 1 405 840 0610