

Technical Data

VisionBox AGE-X TIGER
[Ver. 2.0 / 06.2016]

The Heart of Your Vision System



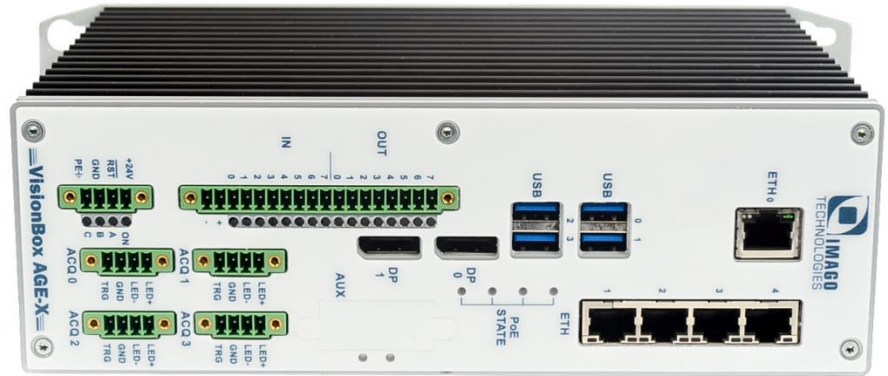
Embedded Industrial Machine Vision Computer | GigE | LED

The AGE-X TIGER consists of the unique Real Time Communication Controller and scalable computing power for Windows or Linux. Interfaces are 4 GigE Vision ports with optional Trigger-and-Power-over-Ethernet, 4 current-driven outputs for LED illumination and digital I/Os. More Interfaces are optionally available. That is the setup if you want to use several GigE cameras together with strobed LED light heads.

Key Features



- Optional Trigger-over-Ethernet
- 4 × LED-Controller and Camera Trigger
- 8/8 Digital In/Out with Opto-Isolators
- 5 × GigE-Interface (4 × Camera, 1 × Network)
- Computing Power from Celeron to i7
- Windows embedded / Linux / RT-Linux
- Embedded System / Fanless Design
- Long-term Availability



Interfaces

Camera Interface	4 × GigE Vision		[Option: PoE or Trigger-and-Power-over-Ethernet]			
Camera Trigger	4 Channels		[Option: 4 × Trigger-over-Ethernet]			
LED-Controller	4 × Current Controlled: $\frac{1}{2} A_{\text{continuous}} / 6 A_{\text{Peak}}$					
Digital I/O	8 × In / 8 × Out, Opto-Isolated, 24V		[Option: 16/16 I/Os]			
Real-Time-Fieldbus	[Option: Hilscher CIFX 90E-xx\ET\F]					
Encoder-Input	[Option: 4 × RS422]					
Mini PCIe Slot (Internal)	[Option: 1]					
Ethernet	5 × 1.000 Mbit/s (4 × GigE Vision; 1 × LAN)		[Option: 7 × 1.000 Mbit/s]			
USB 3.0 / 2.0	4 / -	4 / -	2 / 2	4 / -	4 / -	4 / -
DisplayPort 1.1 (2 ×), 60 Hz	1920 × 1200	1920 × 1200	1920 × 1200	2560 × 1600	1920 × 1200	2560 × 1600

Processors	Celeron	Intel i5	Intel i5	Intel i5	Intel i7	Intel i7
	1020E	3610ME	4400E	6442EQ	3612Q	6822EQ
Frequency (Turbo Mode)	2.2 GHz	2.7 GHz (3.3 GHz)	2.7 GHz (3.3 GHz)	1.9 GHz (2.7 GHz)	2.1 GHz (3.1 GHz)	2.0 GHz (2.8 GHz)
Cores / Threads	2 / 2	2 / 4	2 / 4	4 / 4	4 / 8	4 / 8
DDR RAM (Minimum)	2 GB DDR3	2 GB DDR3	2 GB DDR3	4 GB DDR4	2 GB DDR3	4 GB DDR4
Intel Smart Cache	2 MB	3 MB	3 MB	6 MB	3 MB	8 MB
Intel 64 / Hyper-Threading	Yes / No	Yes / Yes	Yes / Yes	Yes / No	Yes / Yes	Yes / Yes
Mass Storage	SSD	SSD	SSD	SSD	SSD	SSD

Mechanical/Electrical

Power Consumption (Idle / Load)	10W / 40W	10W / 40W	10W / 40W	10W / 30W	10W / 40W	10W / 30W
Power Supply	18V _{DC} – 30V _{DC}					
Thermal Solution	Heat Sink					
Temperature Range	+5 °C ... +45 °C (recommended: +20 °C ... +30 °C)					

© IMAGO Technologies GmbH

Strassheimer Str. 45; 61169 Friedberg; Germany; Tel. +49-6031-6842611; FAX +49-6031-6842612
www.imago-technologies.com; info.itf@imago-technologies.com



Technical Data

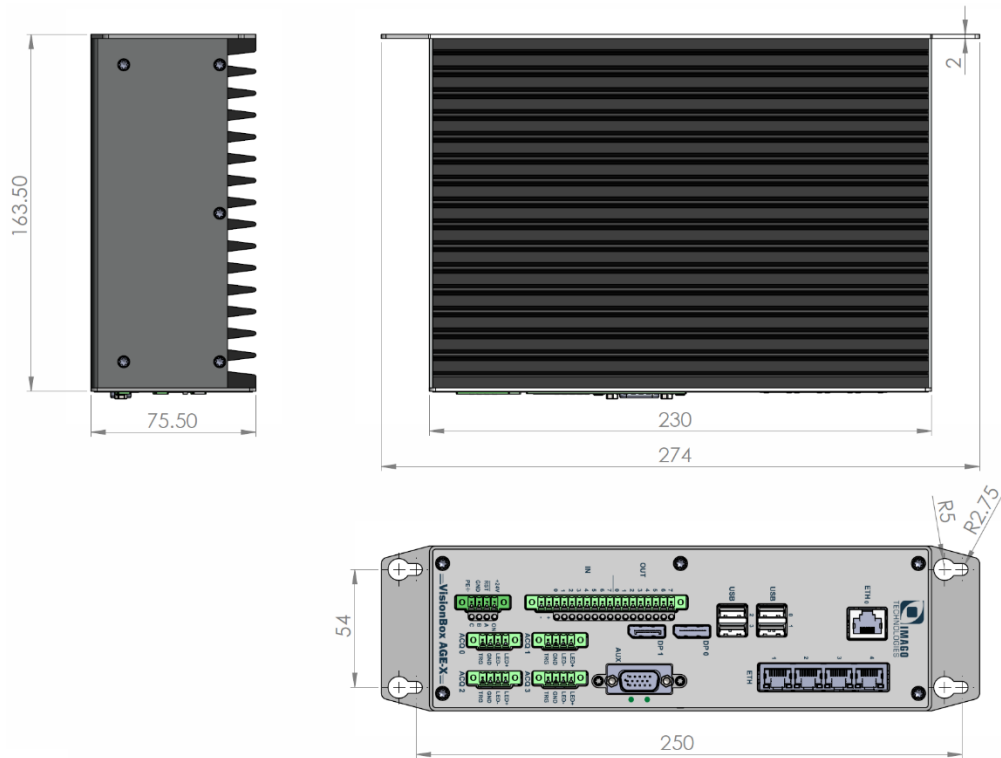
VisionBox AGE-X TIGER
[Ver. 2.0 / 06.2016]

The Heart of Your Vision System



Weight	from approx. 2700 g
Dimensions	230 mm × 164 mm × 76 mm (W × D × H)
	274 mm × 164 mm × 76 mm (W × D × H, on Mounting Plate)
Mounting Support	4 × M5

Dimensions



Block Diagram

