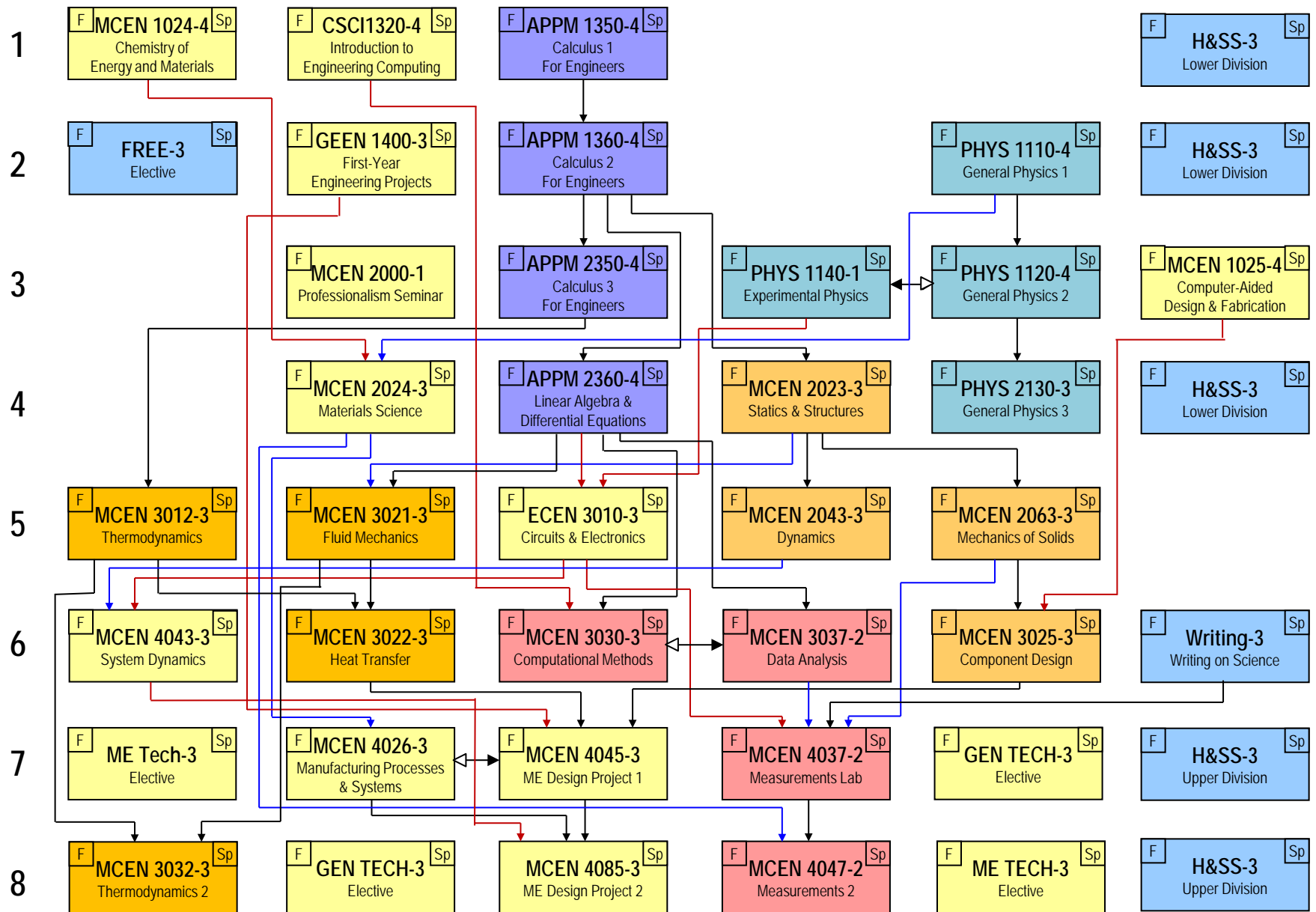


MECHANICAL ENGINEERING CURRICULUM (4-Year Plan)

F Sp = Semester usually taught



Prerequisite → Co-requisite ↔ First course, if not taken as co-requisites ↔ Second course, if not taken as co-requisites

Yellow Version - Effective Fall 2015

Standard Course Substitutions

CSCI1320 – ECEN1310, or CSCI 1300 (Note: COEN1300 and GEEN1300 are also accepted, if completed prior to Fall 2015)

GEEN1400 – ASEN1400, COEN1400, COEN1410, ECEN1400, GEEN2400, or GEEN3400

MCEN1024 – CHEM1113&1114 or CHEN1211&CHEM1221

PHYS2130 – PHYS2170, CHEM3311&3321, APPM3310, or CSCI2270

Writing Requirement

The Writing Requirement can be fulfilled by HUEN1010 (freshmen only), HUEN3100, WRTG3035, or WRTG3030.

Humanities & Social Science Electives

Please see <http://www.colorado.edu/engineering/node/288/>.

General Technical Electives

3000 and 4000 level courses in the following subjects are considered to be General Technical Electives: APPM, AREN, ASEN, ASTR, ATOC, CHEM, CHEN, CSCI, CVEN, EBIO, ECEN, EVEN, EMEN, GEOL, IPHY, MATH, MCDB, MCEN, and PHYS. In addition, GEEN3400 and NAVR3030 have been approved to fulfill the requirement.

ME Technical Electives

4000 level MCEN courses not otherwise required for the major are considered to be ME Technical Electives. BS/MS students have the same course options, but should complete the classes at the 5000 level.

Tech Elective Exceptions

You may use one of the following courses as an ME Tech Elective, provided your second ME Tech Elective is completed within Mechanical Engineering: APPM4350, ASEN4123, GEEN3400, EMEN4030, EMEN4050, EMEN4100, EMEN4200, EMEN4800, EMEN4825, EMEN4830

Grade Requirements

Beginning with the incoming class of Fall 2015, the minimum passing grade for prerequisite and corequisite classes in our curriculum is a C. This includes courses completed outside the department (APPM, PHYS, etc.). The minimum passing grade for standalone classes is a D-. In addition, students need to have a cumulative and major GPA of at least 2.25 in order to graduate from the College of Engineering.