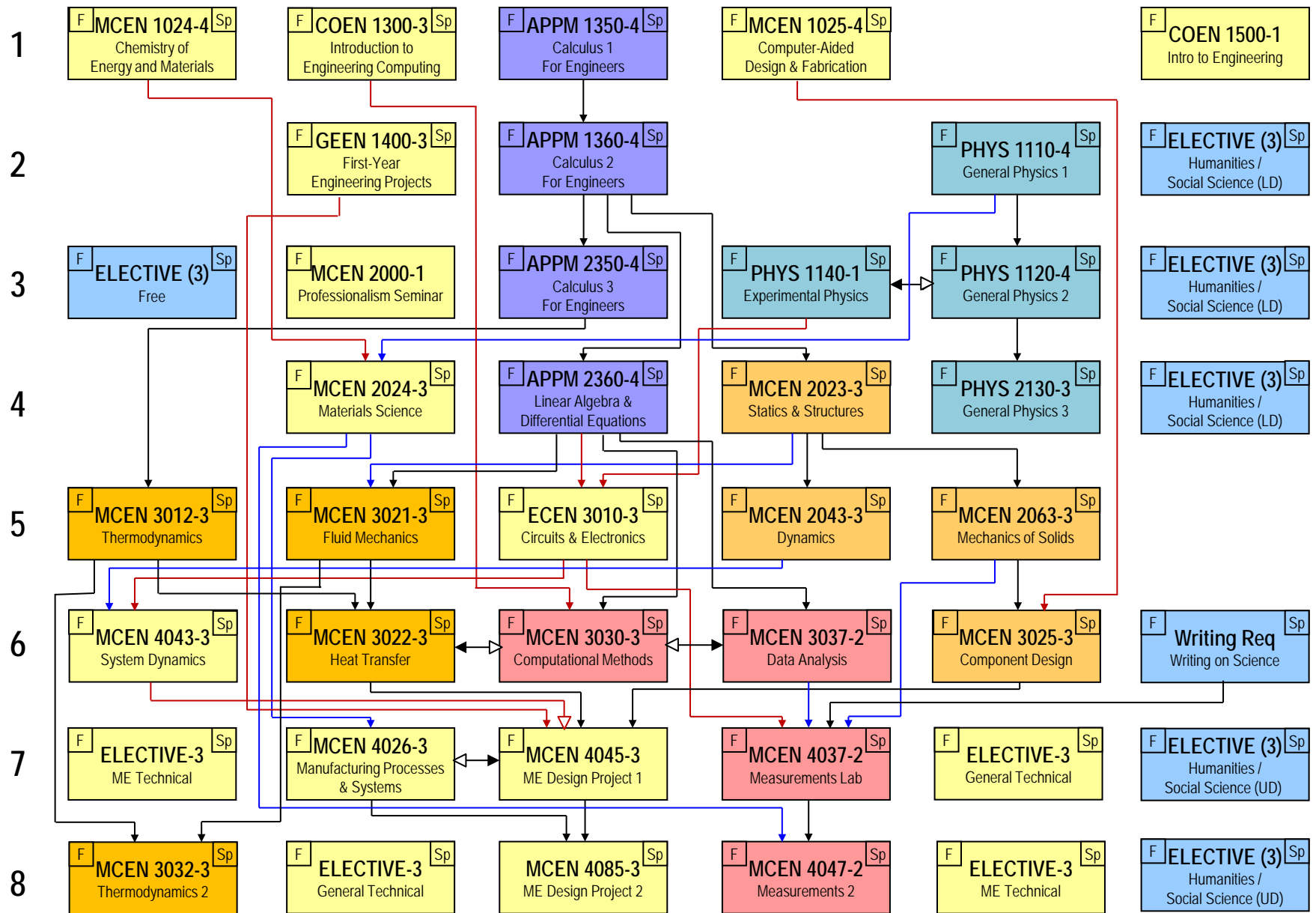


MECHANICAL ENGINEERING CURRICULUM (4-Year Plan)

F Sp = Semester usually taught

4/24/13



Prerequisite → Co-requisite ↔ First course, if not taken as co-requisites ↔ Second course, if not taken as co-requisites

Yellow Version - Effective Fall 2014

Standard Course Substitutions

COEN1300 – GEEN1300, ECEN1310, or CSCI 1300

GEEN1400 – COEN1400, COEN1410, or GEEN2400

MCEN1024 – CHEM1113&1114 or CHEN1211&CHEM1221

PHYS2130 – PHYS2170 (Physics Minor), IPHY3410 (Biomed Option), CHEM3311&3321 (Environmental Option),

APPM3310 (Applied Math Minor), or CSCI2270 (Computer Science Minor)

Writing Requirement

The Writing Requirement can be fulfilled by HUEN1010 (freshmen only), HUEN3100, WRTG3035, or WRTG3030.

Humanities & Social Science Electives

Please see <http://www.colorado.edu/engineering/node/288/>.

General Technical Electives

3000 and 4000 level courses in the following subjects are considered to be General Technical Electives: APPM, AREN, ASEN, ASTR, ATOC, CHEM, CHEN, CSCI, CVEN, EBIO, ECEN, EVEN, EMEN, GEOL, IPHY, MATH, MCDB, MCEN, and PHYS. In addition, GEEN3400 and NAVR3030 have been approved to fulfill the requirement.

ME Technical Electives

4000 level MCEN courses not otherwise required for the major are considered to be ME Technical Electives. BS/MS students have the same course options, but should complete the classes at the 5000 level.