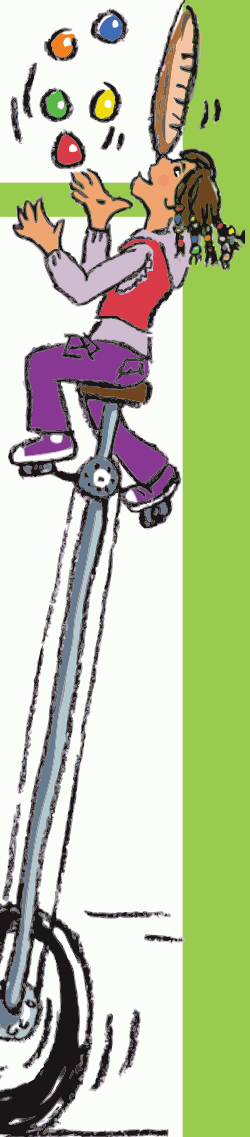


## Bring **FOODPLAY** to your schools!

It's as easy as 1, 2, 3!

- 1. IT WORKS!** Evidence-based with proven results: "FOODPLAY dramatically improves children's eating and exercise habits, and they take the messages home!" —USDA
- 2. IT'S FUN!** Rave reviews by kids, teachers, parents, food service, nurses, and principals... over 4,000,000 children reached!
- 3. IT TOPS THE CHARTS!** WINNER of 10 National Nutrition and Media Awards, plus an EMMY! Voted "Outstanding Nutrition Educator in the Country" by the Society for Nutrition Education and Behavior!



# ON THE MENU

## I. **FOODPLAY School Special\***

Bring *FOODPLAY's* exciting nutrition assembly program with fun and easy follow-up activities!

- \* **FOODPLAY Assembly Performance**  
*Fun-filled live theater show features amazing feats of juggling, music, magic, and audience participation to turn kids on to healthy eating and active living. Integrates nutrition and health into reading, writing, 'rithmetic, science, and health!*
- \* **Travel Fee**
- \* **FOODPLAY Pre-Show Packet**
  - Staff Memos
  - Parent Letter (English & Spanish) + Tips
  - Hallway Poster
  - 15 Quick & Easy Follow-Up Activities
  - School Evaluation
  - Press Packet
- \* **Student Snack Cards/Nutrition Tips**  
*Distributed to every student to take home and post on fridge*
- \* **FOODPLAY Follow-up Activity Guidebook (online)**  
*Follow-up activities and reproducible activity sheets reinforce and extend *FOODPLAY's* healthy eating and active living lessons into the classroom and cafeteria.*

**FOODPLAY School Special Fee.....\$1295**

*Customize your *FOODPLAY* program – add Tracker Bands, Passports, T-shirts, and more – see "A La Carte" offerings on last page and take 10% off your store order when you schedule a program!*

\*The *FOODPLAY* School Special is for individual schools that fit into our national touring schedule. For school districts or partner-sponsored programs, please contact Patti Dougherty at [patti@foodplay.com](mailto:patti@foodplay.com) or 1.800.366.3752 x103.



**FOODPLAY**  
productions  
*Turning kids on to healthy habits!*

## II. FOODPLAY Healthy School Package

Get the whole school community on board and empowered to create healthy children, families, and schools. Complete with comprehensive follow-up activities and fun resources for in class, cafeteria, and at home – all year long!

\* **FOODPLAY Assembly Performance**

*Fun-filled live theater show features amazing feats of juggling, music, magic, and audience participation to turn kids on to healthy eating and active living. Integrates nutrition and health into reading, writing, 'rithmetic, science, and health!*

\* **Travel Fee**

\* **Pre-Show Packet**

- Staff Memos
- Parent Letter (English & Spanish) + Tips
- Hallway Poster
- 15 Quick & Easy Follow-Up Activities
- School Evaluation
- Press Packet

\* **Student Snack Cards/Nutrition Tips**

*Distributed to every student to take home and post on fridge*

\* **FOODPLAY's Comprehensive Follow-Up School Resource Kit**

• **FOODPLAY Follow-Up Activity Guidebook (Online)**

*Follow-up activities and reproducible activity sheets reinforce and extend FOODPLAY's healthy eating and active living lessons into the classroom and cafeteria.*

• **Resource Packets for Food Service, Nurse, and Parents (Online)**

*Activities to link cafeteria with classroom learning, promote school wellness, and help raise healthy families.*

• **MyPlate Activity Kit**

*10 lesson plans and reproducible activity sheets help students learn how to eat healthy with MyPlate – in class and cafeteria.*

• **The Fruit & Vegetable Activity Kit**

*125 pages filled with fun, hands-on activities and reproducible worksheets to teach nutrition through language arts, math, social studies, science, health, and art. Aligned to Common Core Standards!*

\* **FOODPLAY – in the CLASSROOM! – DVD Kits**

• **Tobe Fit, Ace Food Detective DVD – Nutrition Education in 10 bite-size lessons!**

*Bring FOODPLAY back to the classroom with this interactive DVD Kit. Features 10 short segments of the show, fun animation, questions for kids to answer, and cases to solve!*

• **Janey Junkfood's Fresh Adventure! DVD Kit**

*Emmy Award-winner for "Best Children and Youth TV Special," this exciting show follows the FOODPLAY story and makes nutrition come alive in class! Comes with Follow-Up Activity Guidebook.*

\* **FOODPLAY Children's Book: *Janey Junkfood's Fresh Adventure!***

*Students get practice in "reading" as they learn nutrition! Keep in library, or order more!*

\* **Seasonal Gr'Eatings Newsletter**

*License to distribute 4 quarterly editions to parents at your school.*

**FOODPLAY Healthy School Package Fee.....\$1495**

Customize your FOODPLAY program – add Tracker Bands, Passports, T-shirts, and more – see "A La Carte" offerings on last page and take 10% off your store order when you schedule a program!

(prices subject to change)

## ON THE MENU: FOODPLAY!

# À La Carte

## Menu of Options

*Pick and choose what's right for you!*

<b>Fun FOODPLAY Tools and Resources*</b>	<b>Price</b>	<b>Quantity</b>	<b>Total</b>
<b>Fruit &amp; Veggie Tracker Band Sets</b>	\$2.95	_____	\$_____
<i>Classroom set: 25 Tracker Bands (\$1.95 ea)</i>	\$48.75	_____	\$_____
<i>School set: 400 Tracker Bands (\$1.59 ea)</i>	\$636.00	_____	\$_____
<b>Passport to Fresh Adventures!</b>	\$4.95	_____	\$_____
<i>Classroom set: 25 Passports (\$4.75 ea)</i>	\$118.75	_____	\$_____
<i>School set: 400 Passports (\$4.25 ea)</i>	\$1700.00	_____	\$_____
<b>Children's Book: <i>Janey Junkfood's Fresh Adventure!</i></b>			
<i>Hardback</i>	\$15.95	_____	\$_____
<i>Paperback</i>	\$9.95	_____	\$_____
<b>MyPlate Activity Guidebook</b>	\$12.95	_____	\$_____
<b>The Fruit &amp; Vegetable Activity Kit</b>	\$29.95	_____	\$_____
<b>FOODPLAY DVD: <i>Tobe Fit, Ace Food Detective – Cracking the Case!</i></b>			
<i>Bring FOODPLAY back to the classroom with this 10-part interactive DVD!</i>	\$79.95	_____	\$_____
<b><i>Janey Junkfood's Fresh Adventure! DVD Kit</i></b>			
<i>Emmy Award-Winning DVD + Activity Guidebook</i>	\$59.95	_____	\$_____
<b>T-Shirt (all sizes, youth + adult)</b>			
<i>Gives Peas a Chance!</i>	\$15.95	_____	\$_____
<i>EAT YOUR VEGGIES!</i>	\$15.95	_____	\$_____
<b>Music CD: <i>Eat Like a Rainbow</i></b>	\$15.95	_____	\$_____
<b>Seasonal Gr'Eatings Newsletter</b>			
<i>License to distribute 4 quarterly editions to parents at your school</i>	\$99.00	_____	\$_____

**\*\*ORDER TOTAL:** \$\_\_\_\_\_

Call or email your order:

1.800.FOODPLAY (1.800.366.3752) • [store@foodplay.com](mailto:store@foodplay.com)

Or, order online at: [www.foodplay.com/store](http://www.foodplay.com/store)

\*Discounts on bulk orders

\*Co-branding is available and can help schools get sponsor support!

\*\*shipping & handling charged separately

Visit the FOODPLAY store for more information!

[www.foodplay.com/store](http://www.foodplay.com/store)

