

# WHY CIFA



## Truck Mixer Pumps



## WHY CIFA



# WE INVENTED AND REINVENTED THE TRUCK MIXER PUMP

It was 1973 when Cifa became the first company to produce the Truck Mixer Pumps. Thanks to the design and to the technology of the product, today we proudly say that we have been able to produce and sell more than 5.500 truck mixer pumps, transporting and pumping millions of concrete all over the world. Anyhow we did not stop here. We have designed and brought the carbon fiber technology to the boom structure: we reinvented the truck mixer pump once again.



### PAINTING



Customized painting on demand

### MADE IN ITALY



CIFA truck mixers are 100% made in Italy.  
All the components of the CIFA truck mixers are Italian or German brand

### MOUNTED ON ALL TRUCK BRANDS



CIFA truck mixer pumps can be mounted on all truck brands.  
According to CIFA truck specifications documentation

### LEASING



Available in Italy, Russia, China, South Africa,  
Australia, USA and Germany

### SERVICES



Training for operators



#### PLACING BOOMS

Available lengths to reach many distances: 24, 25, 28 and 32 meters.



#### STABILIZATIONS

Single or double telescopic system on front outriggers together with fixed system on rear outriggers in order to guarantee a safe stabilization in a small area.



#### PUMPING UNITS

Two open loop types and one closed loop type according to the desired way of pumping.



#### DRUMS

Two types of drums are available according to client's needs: 7 and 9.5 m<sup>3</sup>.



#### CONTROL SYSTEMS

All controls are designed and positioned to make the job easier and to speed up all the operations.

# MAGNUM. ALL IN ONE.





#### VERSATILITY AND FLEXIBILITY:

The different configurations of the booms on CIFA truck mixer pumps ensure the greatest operative versatility and enable to reach almost any part of the construction yard, even those accessible with the most difficulty. Complete working flexibility together with great working speed, allows the complete extension of the boom and its perfect positioning in few minutes.



# PLACING BOOM

#### STRENGTH AND RELIABILITY:

The booms mounted on CIFA truck mixer pumps combine both strength and reliability. Each section of boom has been designed for maximum structural efficiency and fatigue strength. These advanced booms reduce to a minimum the areas subjected to stress intensification when in operation.



# STABILIZATION SYSTEM



#### OUTRIGGERS:

Outriggers perfectly ensure stability and allow maximum accessibility. The stabilization system consist of fixed rear extensions combined with telescopic simple extension outriggers on the front for small-medium size machines (MK 24.4Z, MK 25H models) or front telescopic double extension for big size machines (MK 28L-4", MK 28L-5" and MK 32L models).

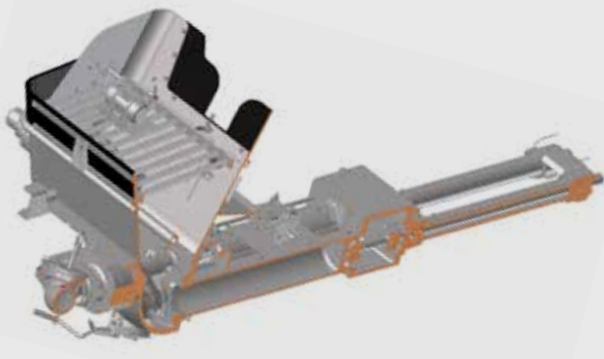




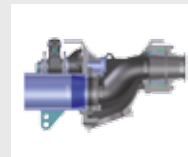


Equipped with the 7" S-valve, completely removable, the pumping unit ensures gentle, continuous and regular flow. This technology guarantees an extremely efficient system for pumping different types of concrete, with aggregates of all sizes, reducing the number of cycles per minute while maintaining the same flow rate, thus ensuring less wear and longer life.

# PUMPING UNIT



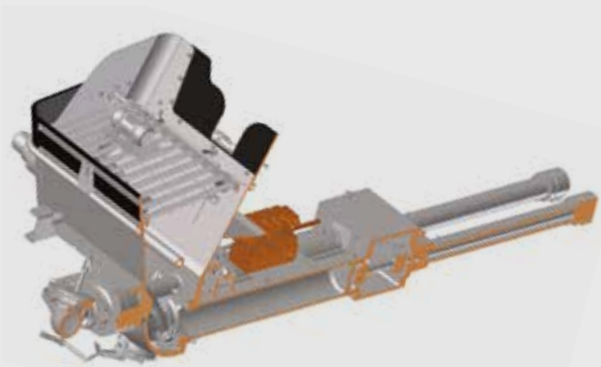
PB607  
EPC Closed Loop type



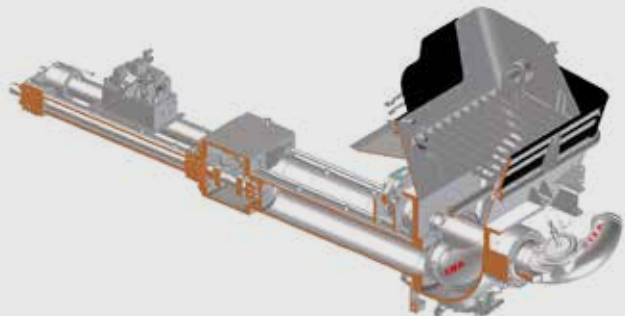
**"S" VALVE:**  
The structure is made with varying thickness to achieve maximum resistance to wear even when using difficult types of concrete.



**WEAR RING AND WEAR PLATE:**  
The ring and the plate are made of special anti wear material against abrasion and stress due to the concrete flow.



PB607  
Open Loop type



PB808  
Open Loop type



# DRUM



## ROLLERS AND SAFETY LOCK

Magnums with 7 m<sup>3</sup> capacity drums are equipped with single roller, while Magnums with 9.5 m<sup>3</sup> drums, due to their higher capacity, come with dual rollers. All the drums have a special anti-rotation lock that ensures greater safety for the operator during extraordinary maintenance.



## LOADING AND UNLOADING AREA: INCREASED FUNCTIONALITY

The elements of the loading and unloading hopper, made of wear-resistant materials, are designed to obtain optimal geometries for efficiency and functionality, meaning minimum concrete blockage chance.



## ELECTRONIC OPERATION CONTROL: ALL FUNCTIONS ALWAYS UNDER CONTROL

The electronic operation control by CSD (Constant Speed Drive) keeps the drum rotation constant by varying the hydraulic motor revolutions.



## ANTI WEAR MATERIAL

The drum and blades are made of high resistance antiwear steel with thickness from three (3) millimeters in steel 450HB light version to four (4) millimeters in 30 Mn B5.



## POWER TRANSMISSION

The main hydraulic unit can be powered through 3 ways, according to the client's needs: PTO engine, PTO gearbox.



## STABILITY OF THE MACHINE

The 3 centre of gravities are designed to ensure the maximum stability to the machine. the drum axle is properly sideshifted to ensure an optimal weight balancing of the machine in all directions and in every concrete loading condition.



#### **BOOM PROPORTIONAL DISTRIBUTOR**

Ergonomic hydraulic controls for boom and stabilization system.



#### **REAR CONTROL PANEL**

Control panel positioned on the rear side for the drum and pumping unit control, including pressure manometers.



#### **REMOTE CONTROL**

Comfortable and lightweight for the boom control and for the management of the main functions of the machine.



#### **CABIN CONTROLS**

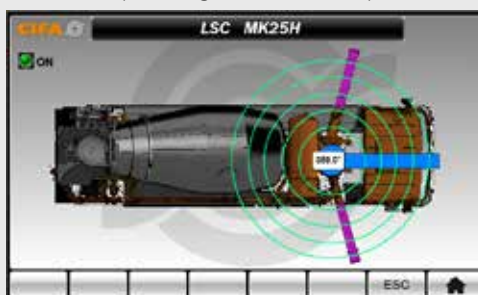
Electro-hydraulic controls placed in the cabin to adjust all main functions of the truck mixer pump and the motors.



#### **DETACHABLE ELECTRICAL SYSTEM**

The electrical system can be detached for easy maintenance.

#### **LSC LIGHT STABILITY CONTROL** (according to EN 12001:2012)



LSC is available, on demand, for MK25H, MK28L-5", MK28L, MK32L



# CONTROL SYSTEMS

# MK25H CARBOTECH

Electronic closed loop version

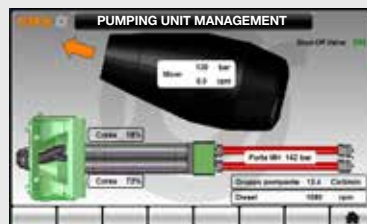
## Smartronic<sup>TM</sup> SILVER

Smartronic, available for MK25H with closed loop pumping unit, is the most advanced electronic management system for truck mixer pumps in the market. It simplifies the operations and collects information to manage all the vehicle functions in the easiest and perfect way.



### COUNTERS

The system collects and transmits data to know at any time the status of the vehicle and its main components.



### PUMPING UNIT MANAGEMENT

The system manages independently the pumping unit, pressure and engine speed in order to optimize the performance.



### DIAGNOSTICS

The system provides a detailed analysis of the working phase, detecting clearly any errors and failures, reducing in this way potential machine downtime.

Smartronic Silver is supplied, as standard, in MK25H closed loop pumping unit



### THE TRUCK MIXER PUMP WITH THE LONGEST BOOM WITHIN 32 TONS WEIGHT, INCLUDING 5 m³ OF CONCRETE PAYLOAD

- 1<sup>st</sup> and 2<sup>nd</sup> sections made of steel
- 3<sup>rd</sup> and 4<sup>th</sup> sections made of CARBOTECH composite material
- Electronic closed loop PB 607 CC EPC pumping unit
- Record small stabilization area
- Can Bus electronic system with less cables and higher reliability





MK 32L



MK 32L



MK 28L-4''



MK 24.4Z



MK 28L-5''



MK 25H

# JOB SITES

# DATA SHEET

TRUCK  
MIXERS  
PUMPS

## MK 24.4Z (3 SECTIONS)



AXLES 3-4 - 80  
AXLES 4 - 115

## MK 25H (4 SECTIONS)



AXLES 3-4 - 80

## MK 28L-4" (4 SECTIONS)



AXLES 4 - 80 / 115

## MK 28L-5" (4 SECTIONS)



AXLES 4 - 80 / 115

## MK 32L (4 SECTIONS)



AXLES 4 - 115

CONFIGURE YOUR NEXT MAGNUM  
<http://configurator.cifa.com/>

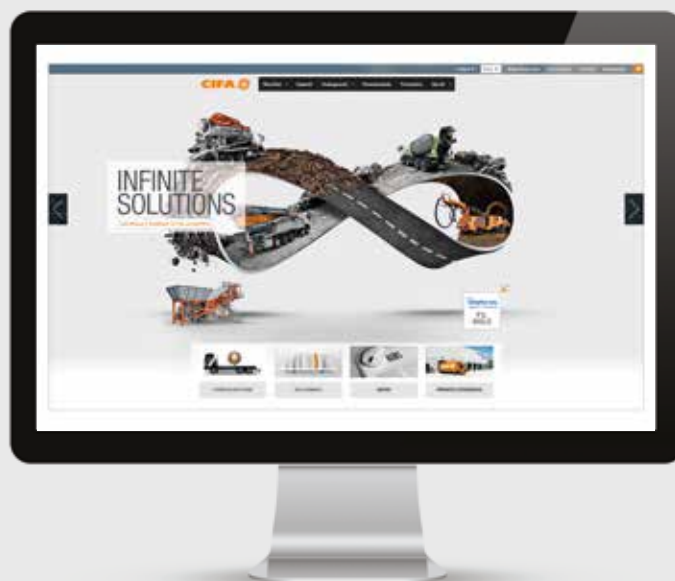
		DRUM				PUMPING UNIT				PLACING BOOM
		80	115			PB 607 S7				
NOMINAL CAPACITY	m <sup>3</sup>	7	9,5	MAX THEORETICAL OUTPUT	m <sup>3</sup> /h	61		PIPELINE DIAMETER	mm	100
DRUM GEOMETRIC VOLUME	m <sup>3</sup>	12,8	14,6	MAX PRESSURE ON CONCRETE	bar	71		MAX VERTICAL REACH	m	23,5
FILLING RATIO	%	55	69	MAX CYCLES PER MIN.	n	32		MAX HORIZONTAL DISTANCE	m	19,5
MAXIMUM DRUM SPEED	r.p.m.	14	14	CONCRETE CYLINDERS DIAM.	mm	200		SECTIONS	n	3
WATER TANK CAPACITY	l	910	910	STROKE LENGTH	mm	1000				
				CONCRETE HOPPER CAPACITY	l	400				

		DRUM				PUMPING UNIT				PLACING BOOM
		80				PB 607 EPC	PB 607 S7			
NOMINAL CAPACITY	m <sup>3</sup>	7		MAX THEORETICAL OUTPUT	m <sup>3</sup> /h	61	61	PIPELINE DIAMETER	mm	100
DRUM GEOMETRIC VOLUME	m <sup>3</sup>	12,8		MAX PRESSURE ON CONCRETE	bar	71	71	MAX VERTICAL REACH	m	24,2
FILLING RATIO	%	55		MAX CYCLES PER MIN.	n	32	32	MAX HORIZONTAL DISTANCE	m	20,2
MAXIMUM DRUM SPEED	r.p.m.	14		CONCRETE CYLINDERS DIAM.	mm	200	200	SECTIONS	n	4
WATER TANK CAPACITY	l	600		STROKE LENGTH	mm	1000	1000			
				CONCRETE HOPPER CAPACITY	l	400	400			

		DRUM				PUMPING UNIT				PLACING BOOM
		80	115			PB 607 S7	PB 808 S7			
NOMINAL CAPACITY	m <sup>3</sup>	7	9,5	MAX THEORETICAL OUTPUT	m <sup>3</sup> /h	61	81	PIPELINE DIAMETER	mm	100
DRUM GEOMETRIC VOLUME	m <sup>3</sup>	12,8	14,5	MAX PRESSURE ON CONCRETE	bar	71	81	MAX VERTICAL REACH	m	28,1
FILLING RATIO	%	55	69	MAX CYCLES PER MIN.	n	32	43	MAX HORIZONTAL DISTANCE	m	24,1
MAXIMUM DRUM SPEED	r.p.m.	14	14	CONCRETE CYLINDERS DIAM.	mm	200	200	SECTIONS	n	4
WATER TANK CAPACITY	l	800	800	STROKE LENGTH	mm	1000	1000			
				CONCRETE HOPPER CAPACITY	l	400	500			

		DRUM				PUMPING UNIT				PLACING BOOM
		80	115			PB 607 S7	PB 808 S7			
NOMINAL CAPACITY	m <sup>3</sup>	7	9,5	MAX THEORETICAL OUTPUT	m <sup>3</sup> /h	61	81	PIPELINE DIAMETER	mm	125
DRUM GEOMETRIC VOLUME	m <sup>3</sup>	12,8	14,5	MAX PRESSURE ON CONCRETE	bar	71	81	MAX VERTICAL REACH	m	28,4
FILLING RATIO	%	55	69	MAX CYCLES PER MIN.	n	32	43	MAX HORIZONTAL DISTANCE	m	24,4
MAXIMUM DRUM SPEED	r.p.m.	14	14	CONCRETE CYLINDERS DIAM.	mm	200	200	SECTIONS	n	4
WATER TANK CAPACITY	l	800	800	STROKE LENGTH	mm	1000	1000			
				CONCRETE HOPPER CAPACITY	l	400	500			

		DRUM				PUMPING UNIT				PLACING BOOM
		115				PB 607 S7	PB 808 S7			
NOMINAL CAPACITY	m <sup>3</sup>	9,5		MAX THEORETICAL OUTPUT	m <sup>3</sup> /h	61	81	PIPELINE DIAMETER	mm	100
DRUM GEOMETRIC VOLUME	m <sup>3</sup>	14,5		MAX PRESSURE ON CONCRETE	bar	71	81	MAX VERTICAL REACH	m	31,2
FILLING RATIO	%	69		MAX CYCLES PER MIN.	n	32	43	MAX HORIZONTAL DISTANCE	m	27,2
MAXIMUM DRUM SPEED	r.p.m.	14		CONCRETE CYLINDERS DIAM.	mm	200	200	SECTIONS	n	4
WATER TANK CAPACITY	l	800		STROKE LENGTH	mm	1000	1000			
				CONCRETE HOPPER CAPACITY	l	400	500			



Discover more at [www.cifa.com](http://www.cifa.com)

Distributor



**CIFA** <sup>®</sup>  
A ZOOMLION COMPANY

**CIFA S.p.A.**

Via Stati Uniti d'America, 26  
20030 Senago (Milano) - Italy  
tel. +39.02.990131  
fax. +39.02.9981157

**[sales@cifa.com](mailto:sales@cifa.com)**  
**[www.cifa.com](http://www.cifa.com)**

