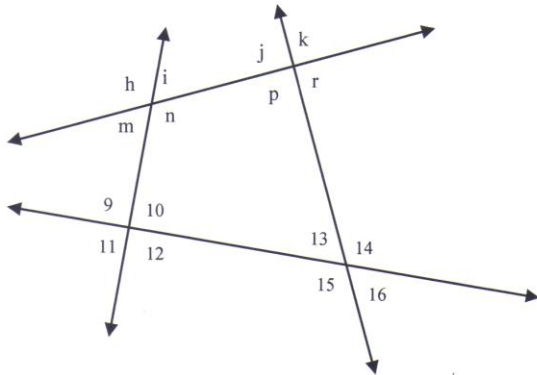


Math 2 Chapter 7 Practice Quiz #14 Answer Key

1. What is the name of each pair of angles?



- $\angle 12$ and $\angle 10$ linear pair
- $\angle k$ and $\angle m$ alternate exterior
- $\angle i$ and $\angle m$ vertical
- $\angle 13$ and $\angle 10$ same-side interior
- $\angle 14$ and $\angle p$ alternate interior
- $\angle r$ and $\angle 16$ corresponding

2. What is the value of x and y.

(a)

x = 26 y = 13

(b)

x = 6*sqrt(2) y = 6

(c)

x = 22*sqrt(3) y = 11*sqrt(3)

(d)

x = 9*sqrt(2) y = 9*sqrt(2)

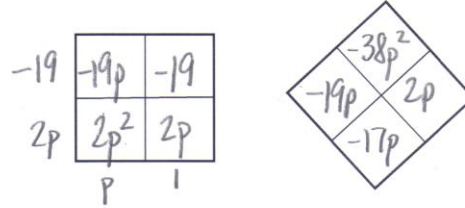
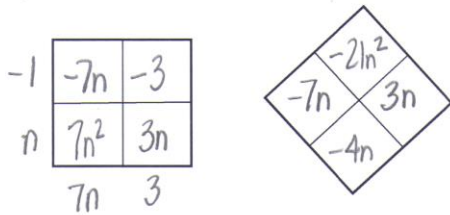
(e)

x = 5*sqrt(3) y = 5

3. Factor the following COMPLETELY!

(a) $14n^2 - 8n - 6$
 $2(7n^2 - 4n - 3)$

(b) $6p^2 - 51p - 57$
 $3(2p^2 - 17p - 19)$



$2(n-1)(7n+3)$
 $7n^2 + 3n - 7n - 3$
 $2(7n^2 - 4n - 3)$

$3(2p-19)(p+1)$
 $2p^2 + 2p - 19p - 19$
 $2p^2 - 17p - 19$