



Tropics Laminate Flooring Glueless Floating Installation Guide

INSTALLER / OWNER RESPONSIBILITY

- It is the Installer/Owner's responsibility to carefully inspect ALL materials BEFORE installation as to the accuracy of the order and the conditions/quality of product such as milling, laminations, dimension, grade, color and finish.
- If the flooring is not acceptable for any reason or appears to be doubtful, do not install and contact your supplier. Once the flooring is installed, it is deemed to have been "accepted" by the owner even if the owner was absent at time of installation. Warranties & Claims DO NOT cover materials with visible defects once they are installed.
- He/she must use good judgment and reasonable selectivity and hold out or cut off pieces with visible defects or imperfections. NOTE: The industry standard for allowable waste by the manufacturer is 5% to offset visual or milling defects during manufacturing process.
- "Racking the Floor"** As you install the floor, blend the laminate planks from several cartons to provide a random look throughout the installation.
- Performance of the floor is highly dependent on proper installation. It is the responsibility of the installer to determine if the job site subfloor and job site conditions are environmentally and structurally acceptable for laminate flooring installation.
- Warranty does not cover problems resulting from or associated with the subfloor, job site environment or installation deficiencies.

ACCLIMATION

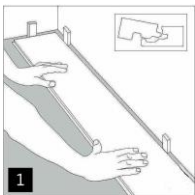
Flooring should be at the job site at least 48 hours prior to installation to allow the laminate flooring to adapt to the temperature and moisture contents of the new environment. Cartons should be placed in the center of the installation site area. Keep away from the air vents, outside walls or windows. Do not store directly on the concrete. Flooring should be kept flat with the proper support at both ends and stack cartons to provide at least 4" space under and around the each carton to allow air to circulate evenly. Do not open cartons until ready to install. Heating and air conditioning units must be operating at least 7 days prior to the delivery of the flooring and maintain a consistent room temperature between 65-75° F and a relative humidity of 45-55%. This environment should be kept at the time of installation and after the installation all year around.

SUBFLOORS AND JOBSITE CONDITION

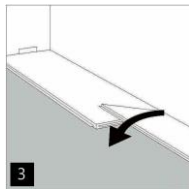
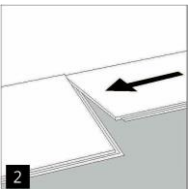
Laminate Flooring can be installed on, above, below grade or on almost all types of floors (existing stone floors, ceramic tiles, terrazzo, marble, PVC, linoleum floors and resilient (VCT) vinyl composition tile) providing they are clean, sound, dry and smooth.

- Must be checked for moisture. (Maximum moisture reading for wood subfloor is 14% and for concrete subfloor is 4.5%.)
- Must be clean, structurally sound and flat and level at 3/16" in a 10' radius or 1/8" in a 6' radius.
- Concrete subfloor must be completely cured and at least 90 days old.
- A moisture vapor barrier such as minimum of 6 mil polyethylene film should be installed between concrete and ground. Make sure the basements and crawl spaces are well ventilated.
- If installing over a crawl space or a concrete floor, use of polyethylene vapor barrier is required along with a minimum 2mm thickness foam underlayment. We recommend 2 in 1 Moisture Blok or 3 in 1 Sound Blok Plus underlayment by Forest Accents.
- Forest Accents laminate flooring needs room to expand. An expansion gap of 10-15mm (3/8" – 5/8") should always be left around the perimeter of the room (e.g.: between the flooring panels and the walls or any other fixed elements, such as heating pipes or door jams). The expansion gap can be covered up with baseboards, quarter round, or the appropriate floor molding. T-moldings (at least 2cm (1") in width) must be used between adjoining rooms, hallways and doorways. T-moldings must be used in the middle of rooms measuring 10 meters (33') in the direction of the panel length and more than 8 meters (26') in the direction of the panel width.

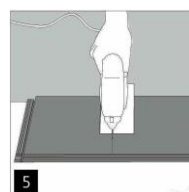
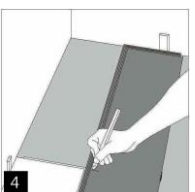
START INSTALLATION



First Plank, First Row: Start from left side corner of the starting wall and lay first row with tongue sides facing wall. Allow at least ½" expansion gap around the perimeter of the room and all vertical obstructions by placing spacers against a wall. For rooms larger than 27' feet in any direction, double the expansion gap and T-molding should be installed at the archway or at the beginning of the hallway or entry to provide additional expansion space. If the wall is uneven, the plank must be adapted to its contours. Mark the plank with the contour of the wall.

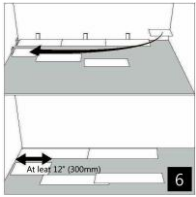


Join the short end of the second plank tongue to the first plank groove and fold down the second plank. Repeat the same step and complete the first row.

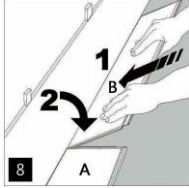
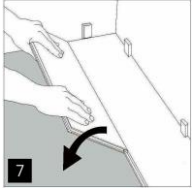


Last Plank (first and any row): At the end of the row, make sure to leave an expansion gap of ½" to the wall and measure the length from the wall to the last plank that was installed in full plank.

Cut the plank to fit. If cutting with a jig saw, decor or finish side turned down or with a hand saw (fine-tooth type) the decor or finish side up. If the measurement of last plank will be less than 12" long, the first plank of the row needs to be adjusted.

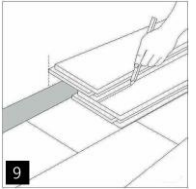


Second Row: Use the cut off end of last board (at least 12" long) from the previous row and continue installing the second row. End joints of adjacent rows should be staggered correctly (12") to achieve more favorable overall appearance. Make sure to leave the proper 1/2" expansion gap against the wall.



Place the long side of the plank at an angle against the plank in the first (previous) row, press forward and fold down at the same time until the joints locks.

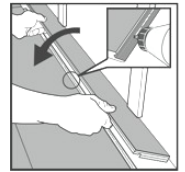
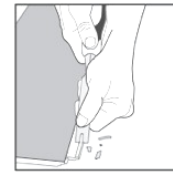
Second Plank, Second Row: Engage the long side of the new plank (B) at an angle into the previous row. Fold down the plank so the short side engages with short side of the previously installed plank (A).



Final Row of Installation: Measure and trim the long side of each plank for the final row allowing 1/2" expansion space to the wall line. Engage the long side of the trimmed planks into the adjoining boards in the 2nd to last row at a 20° angle and fold down engaging the short side ends tightly together.

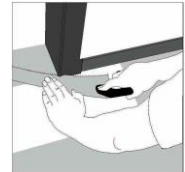
Horizontal installation in difficult areas

If it is difficult to angle planks up into position, cut off the locking element with a chisel, put white glue (PVA laminate glue) on the adjusted strip and push the planks horizontally together. If necessary place some spacers between last plank and the wall during the hardening time of the glue. The method can also be applied to the short ends.



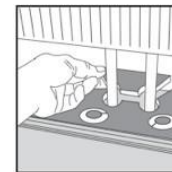
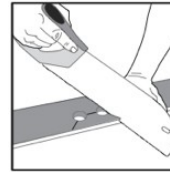
Installation under door molding and skirting

Lay a board (decorative side down) next to the door molding and cut as shown. Slide the board under the molding.



Installation around pipes

Measure the diameter of the pipes and drill the hole with a diameter 1/2" bigger than the pipe diameter. Cut off a piece as shown. Install the floor. Put white PVAc glue on the cut piece in the place.



Installation over Radiant Heated Floors

- Always follow the instruction from the radiant heating system manufacturer. Below is the general instruction.
- Operation of radiant heat system should be set to run at 2/3 maximum output for a minimum of 2 weeks prior to installation of flooring to further allow any remaining moisture from concrete to evaporate.
- All radiant heating systems must be set to room temp. (A minimum of 64°F), for at least 4 days before flooring delivery; acclimation, or installation processes may begin.
 - Proceed with the floating installation. Use of 2 in 1 or 3 in 1 underlayment is mandatory.
 - After completing the installation, do not change the radiant heat setting for 48 hrs.
 - 48 hours after the installation, slowly raise the temperature by few degree daily increments over period of one week its preferred temperature for flooring to adjust to the temperature changes in a gradual manner. Avoid dramatic temperature changes at anytime.
 - Operate the radiant heating system at the lowest possible temperature required to achieve a comfortable living environment. Never raise the flooring surface temperature setting above 80 degrees Fahrenheit.
 - Dedicated thermostat should be installed to allow the temperature of the radiant heating system to be accurately controlled.

Disassembling

Your Laminate Flooring can very easy be disassembled, which enables replacement during installation and also after made installation when it is needed or desired to replace one or several planks or even the whole floor.

After the installation

Remove all spacers along the walls and install moldings. The skirting/baseboard must be fastened to the walls and never to the floor.

Care and Maintenance

Your Laminate Flooring should be cleaned using a vacuum-cleaner. Use a recommended hardwood/laminate floor cleaner. Place doormats at entrances and use floor protectors, felt pads under chair and furniture legs. See Care and Maintenance Guide for more information.