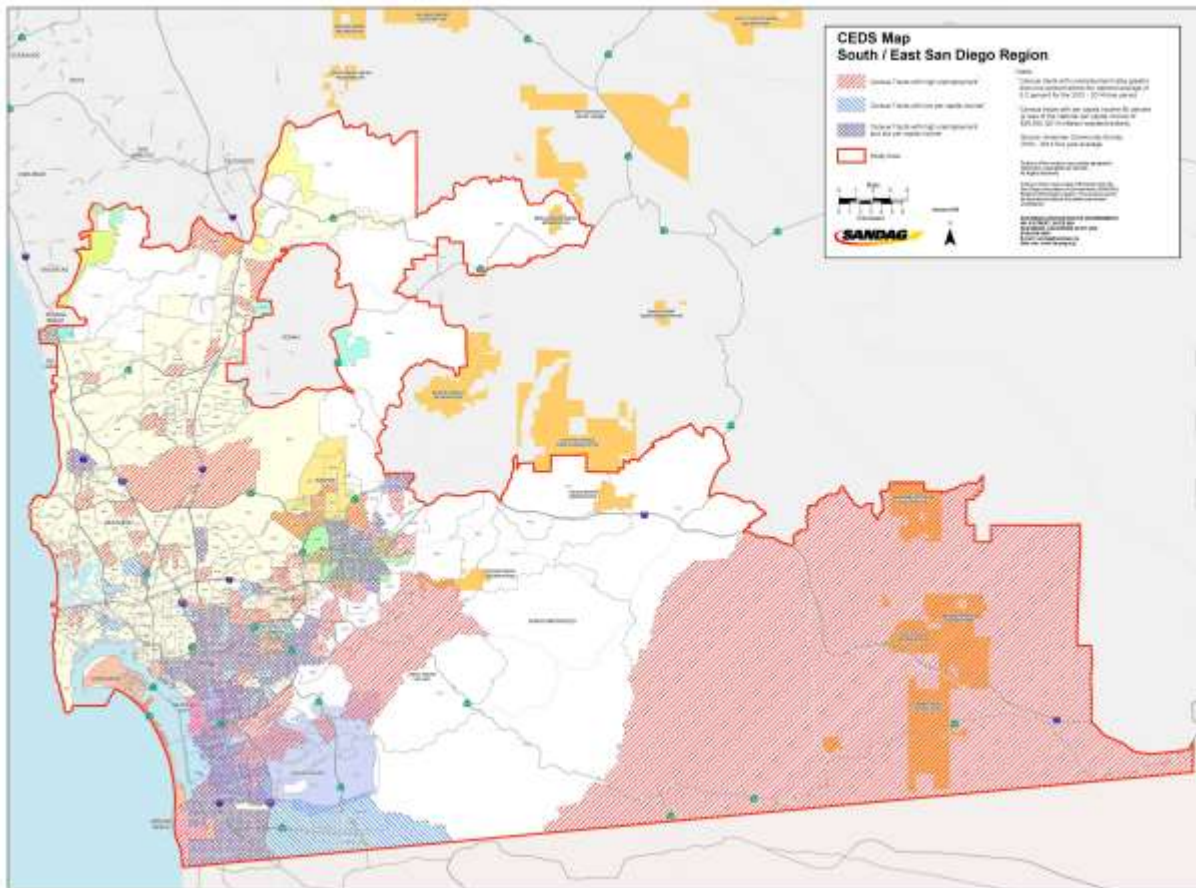


## APPENDIX A CEDS STUDY AREA, PER CAPITA INCOME AND CIVILIAN UNEMPLOYMENT RATE BY CENSUS TRACT

The CEDS study area includes the central, southern and eastern portions of San Diego County including the cities of Coronado, Imperial Beach, Chula Vista, and National City in the south; El Cajon, Lemon Grove, La Mesa, and Santee in the East, and the City of San Diego. The study area, shown in Figure A.1, includes 462 out of 627 census tracts in San Diego County. Of these 462 tracts, 227, or 49 percent meet EDA's low per capita income and/or high unemployment criteria.

**Figure A.1**  
**2014 San Diego Central, South and East CEDS Study Area**



Three basic distress factors that determine the eligibility of an area for EDA assistance—unemployment, low income, and special needs. The table shows per capita income and unemployment rate data by census tract for the study area for the 2010-2014 time period (most recent data available from the U.S. Census Bureau). Those tracts that meet the EDA criteria are highlighted in the table (Table A.1).

**Table A.1**  
**2014 San Diego Central, South and East CEDS Study Area**  
**Per Capita Income and Civilian Unemployment Rate by Census Tract**  
**(American Community Survey, 2010-2014)**

Census Tract	2014 ACS Per Capita Income (PCI) Criteria			2014 ACS Civilian Labor Force and Unemployment Rate Criteria					
	PCI	80% of the US PCI	Meets EDA PCI Criteria <sup>2</sup>	Civilian Labor Force	Civilian Employment	Civilian Unemployment	Unemployment Rate	1 % higher than US Unemp. Rate	Meets EDA Unemployment Criteria <sup>1</sup>
1.00	\$74,312	\$22,844	False	1,273	1,223	50	3.93%	10.2%	False
2.01	\$55,690	\$22,844	False	1,397	1,306	91	6.51%	10.2%	False
2.02	\$53,176	\$22,844	False	2,972	2,854	118	3.97%	10.2%	False
3.00	\$49,677	\$22,844	False	2,949	2,773	176	5.97%	10.2%	False
4.00	\$53,228	\$22,844	False	2,584	2,455	129	4.99%	10.2%	False
5.00	\$44,486	\$22,844	False	2,030	1,877	153	7.54%	10.2%	False
6.00	\$40,866	\$22,844	False	2,087	1,979	108	5.17%	10.2%	False
7.00	\$47,270	\$22,844	False	2,984	2,758	226	7.57%	10.2%	False
8.00	\$40,001	\$22,844	False	2,378	2,142	236	9.92%	10.2%	False
9.00	\$33,105	\$22,844	False	3,703	3,333	370	9.99%	10.2%	False
10.00	\$37,094	\$22,844	False	3,883	3,577	306	7.88%	10.2%	False
11.00	\$30,079	\$22,844	False	2,180	2,023	157	7.20%	10.2%	False
12.00	\$31,762	\$22,844	False	4,171	3,864	307	7.36%	10.2%	False
13.00	\$26,892	\$22,844	False	4,285	3,996	289	6.74%	10.2%	False
14.00	\$47,425	\$22,844	False	2,086	1,953	133	6.38%	10.2%	False
15.00	\$34,759	\$22,844	False	2,492	2,288	204	8.19%	10.2%	False
16.00	\$20,273	\$22,844	True	3,080	2,805	275	8.93%	10.2%	False
17.00	\$26,329	\$22,844	False	3,056	2,707	349	11.42%	10.2%	True
18.00	\$26,068	\$22,844	False	3,856	3,608	248	6.43%	10.2%	False
19.00	\$47,489	\$22,844	False	2,143	1,977	166	7.75%	10.2%	False
20.01	\$65,951	\$22,844	False	1,785	1,699	86	4.82%	10.2%	False
20.02	\$44,625	\$22,844	False	1,587	1,480	107	6.74%	10.2%	False
21.00	\$29,914	\$22,844	False	3,290	2,908	382	11.61%	10.2%	True
22.01	\$10,211	\$22,844	True	1,663	1,384	279	16.78%	10.2%	True
22.02	\$9,558	\$22,844	True	2,119	1,845	274	12.93%	10.2%	True
23.01	\$16,444	\$22,844	True	1,428	1,270	158	11.06%	10.2%	True
23.02	\$10,297	\$22,844	True	2,823	2,229	594	21.04%	10.2%	True
24.01	\$18,328	\$22,844	True	2,542	2,320	222	8.73%	10.2%	False
24.02	\$12,493	\$22,844	True	2,249	2,000	249	11.07%	10.2%	True
25.01	\$13,392	\$22,844	True	2,569	2,178	391	15.22%	10.2%	True
25.02	\$20,714	\$22,844	True	3,085	2,701	384	12.45%	10.2%	True

Census Tract	2014 ACS Per Capita Income (PCI) Criteria			2014 ACS Civilian Labor Force and Unemployment Rate Criteria					
	PCI	80% of the US PCI	Meets EDA PCI Criteria <sup>2</sup>	Civilian Labor Force	Civilian Employment	Civilian Unemployment	Unemployment Rate	1 % higher than US Unemp. Rate	Meets EDA Unemployment Criteria <sup>1</sup>
26.01	\$11,149	\$22,844	True	2,727	2,360	367	13.46%	10.2%	True
26.02	\$14,632	\$22,844	True	2,054	1,789	265	12.90%	10.2%	True
27.02	\$24,535	\$22,844	False	2,971	2,573	398	13.40%	10.2%	True
27.03	\$23,090	\$22,844	False	3,895	3,470	425	10.91%	10.2%	True
27.05	\$19,545	\$22,844	True	2,503	2,388	115	4.59%	10.2%	False
27.07	\$10,894	\$22,844	True	2,690	2,327	363	13.49%	10.2%	True
27.08	\$9,949	\$22,844	True	2,412	2,097	315	13.06%	10.2%	True
27.09	\$12,813	\$22,844	True	1,543	1,263	280	18.15%	10.2%	True
27.10	\$15,926	\$22,844	True	1,908	1,771	137	7.18%	10.2%	False
27.11	\$15,907	\$22,844	True	1,236	1,026	210	16.99%	10.2%	True
27.12	\$18,803	\$22,844	True	2,328	1,992	336	14.43%	10.2%	True
28.01	\$30,529	\$22,844	False	1,264	1,162	102	8.07%	10.2%	False
28.03	\$30,274	\$22,844	False	3,163	2,876	287	9.07%	10.2%	False
28.04	\$23,016	\$22,844	False	2,456	2,201	255	10.38%	10.2%	True
29.02	\$22,957	\$22,844	False	3,359	3,029	330	9.82%	10.2%	False
29.03	\$23,123	\$22,844	False	2,207	1,969	238	10.78%	10.2%	True
29.04	\$13,295	\$22,844	True	3,900	3,640	260	6.67%	10.2%	False
29.05	\$20,584	\$22,844	True	2,485	1,988	497	20.00%	10.2%	True
30.01	\$18,478	\$22,844	True	1,828	1,565	263	14.39%	10.2%	True
30.03	\$20,844	\$22,844	True	2,576	2,147	429	16.65%	10.2%	True
30.04	\$14,015	\$22,844	True	2,407	2,011	396	16.45%	10.2%	True
31.01	\$17,913	\$22,844	True	1,778	1,599	179	10.07%	10.2%	False
31.03	\$16,794	\$22,844	True	3,098	2,516	582	18.79%	10.2%	True
31.05	\$17,333	\$22,844	True	1,958	1,588	370	18.90%	10.2%	True
31.07	\$20,438	\$22,844	True	3,054	2,685	369	12.08%	10.2%	True
31.08	\$19,304	\$22,844	True	1,824	1,571	253	13.87%	10.2%	True
31.09	\$25,088	\$22,844	False	1,843	1,656	187	10.15%	10.2%	False
31.11	\$15,147	\$22,844	True	2,739	2,319	420	15.33%	10.2%	True
31.12	\$20,499	\$22,844	True	2,099	1,871	228	10.86%	10.2%	True
31.13	\$23,299	\$22,844	False	2,692	2,165	527	19.58%	10.2%	True
31.14	\$22,786	\$22,844	True	1,659	1,542	117	7.05%	10.2%	False
31.15	\$17,714	\$22,844	True	3,164	2,656	508	16.06%	10.2%	True
32.01	\$17,016	\$22,844	True	2,031	1,747	284	13.98%	10.2%	True
32.02	\$17,136	\$22,844	True	2,277	1,973	304	13.35%	10.2%	True
32.04	\$26,711	\$22,844	False	1,781	1,582	199	11.17%	10.2%	True
32.07	\$30,335	\$22,844	False	3,350	2,997	353	10.54%	10.2%	True
32.08	\$18,556	\$22,844	True	3,263	2,743	520	15.94%	10.2%	True
32.09	\$20,739	\$22,844	True	2,961	2,690	271	9.15%	10.2%	False
32.11	\$21,082	\$22,844	True	1,617	1,473	144	8.91%	10.2%	False
32.12	\$21,910	\$22,844	True	1,811	1,626	185	10.22%	10.2%	True
32.13	\$26,753	\$22,844	False	1,999	1,912	87	4.35%	10.2%	False

Census Tract	2014 ACS Per Capita Income (PCI) Criteria			2014 ACS Civilian Labor Force and Unemployment Rate Criteria					
	PCI	80% of the US PCI	Meets EDA PCI Criteria <sup>2</sup>	Civilian Labor Force	Civilian Employment	Civilian Unemployment	Unemployment Rate	1 % higher than US Unemp. Rate	Meets EDA Unemployment Criteria <sup>1</sup>
32.14	\$23,265	\$22,844	False	2,690	2,510	180	6.69%	10.2%	False
33.01	\$12,716	\$22,844	True	1,341	1,077	264	19.69%	10.2%	True
33.03	\$11,179	\$22,844	True	2,223	1,712	511	22.99%	10.2%	True
33.04	\$11,010	\$22,844	True	1,510	1,323	187	12.38%	10.2%	True
33.05	\$12,256	\$22,844	True	2,499	1,914	585	23.41%	10.2%	True
34.01	\$21,883	\$22,844	True	2,848	2,467	381	13.38%	10.2%	True
34.03	\$14,752	\$22,844	True	2,005	1,732	273	13.62%	10.2%	True
34.04	\$13,447	\$22,844	True	2,244	1,908	336	14.97%	10.2%	True
35.01	\$10,869	\$22,844	True	1,794	1,547	247	13.77%	10.2%	True
35.02	\$10,259	\$22,844	True	1,985	1,639	346	17.43%	10.2%	True
36.01	\$10,137	\$22,844	True	1,294	1,077	217	16.77%	10.2%	True
36.02	\$12,311	\$22,844	True	1,566	1,356	210	13.41%	10.2%	True
36.03	\$12,127	\$22,844	True	2,229	1,875	354	15.88%	10.2%	True
38.00	\$27,704	\$22,844	False	128	128	0	0.00%	10.2%	False
39.01	\$9,647	\$22,844	True	1,748	1,388	360	20.59%	10.2%	True
39.02	\$10,291	\$22,844	True	2,296	1,792	504	21.95%	10.2%	True
40.00	\$10,810	\$22,844	True	2,480	2,202	278	11.21%	10.2%	True
41.00	\$23,071	\$22,844	False	3,762	3,473	289	7.68%	10.2%	False
42.00	\$41,301	\$22,844	False	3,695	3,560	135	3.65%	10.2%	False
43.00	\$50,579	\$22,844	False	2,413	2,281	132	5.47%	10.2%	False
44.00	\$38,875	\$22,844	False	2,597	2,465	132	5.08%	10.2%	False
45.01	\$28,567	\$22,844	False	1,910	1,717	193	10.10%	10.2%	False
46.00	\$40,219	\$22,844	False	1,352	1,296	56	4.14%	10.2%	False
47.00	\$13,774	\$22,844	True	931	816	115	12.35%	10.2%	True
48.00	\$13,581	\$22,844	True	1,680	1,394	286	17.02%	10.2%	True
49.00	\$11,418	\$22,844	True	2,449	2,058	391	15.97%	10.2%	True
50.00	\$9,901	\$22,844	True	1,167	862	305	26.14%	10.2%	True
51.00	\$26,830	\$22,844	False	3,501	2,857	644	18.39%	10.2%	True
52.00	\$35,315	\$22,844	False	2,995	2,813	182	6.08%	10.2%	False
53.00	\$39,264	\$22,844	False	2,360	2,265	95	4.03%	10.2%	False
54.00	\$82,618	\$22,844	False	5,167	4,943	224	4.34%	10.2%	False
55.00	\$25,417	\$22,844	False	0	0	0	0.00%	10.2%	False
56.00	\$59,942	\$22,844	False	2,774	2,654	120	4.33%	10.2%	False
57.00	\$23,072	\$22,844	False	973	798	175	17.99%	10.2%	True
58.00	\$56,828	\$22,844	False	1,800	1,678	122	6.78%	10.2%	False
59.00	\$49,989	\$22,844	False	1,859	1,779	80	4.30%	10.2%	False
60.00	\$56,505	\$22,844	False	2,210	2,118	92	4.16%	10.2%	False
61.00	\$46,457	\$22,844	False	1,424	1,299	125	8.78%	10.2%	False
62.00	\$26,419	\$22,844	False	0	0	0	0.00%	10.2%	False
63.00	\$14,937	\$22,844	True	175	168	7	4.00%	10.2%	False
65.00	\$32,902	\$22,844	False	1,438	1,293	145	10.08%	10.2%	False

Census Tract	2014 ACS Per Capita Income (PCI) Criteria			2014 ACS Civilian Labor Force and Unemployment Rate Criteria					
	PCI	80% of the US PCI	Meets EDA PCI Criteria <sup>2</sup>	Civilian Labor Force	Civilian Employment	Civilian Unemployment	Unemployment Rate	1 % higher than US Unemp. Rate	Meets EDA Unemployment Criteria <sup>1</sup>
66.00	\$15,584	\$22,844	True	354	341	13	3.67%	10.2%	False
68.01	\$34,033	\$22,844	False	1,372	1,231	141	10.28%	10.2%	True
68.02	\$36,654	\$22,844	False	3,147	3,054	93	2.96%	10.2%	False
69.00	\$46,051	\$22,844	False	3,149	2,996	153	4.86%	10.2%	False
70.02	\$53,492	\$22,844	False	1,486	1,369	117	7.87%	10.2%	False
71.00	\$68,915	\$22,844	False	2,407	2,224	183	7.60%	10.2%	False
72.00	\$46,692	\$22,844	False	2,692	2,526	166	6.17%	10.2%	False
73.01	\$43,740	\$22,844	False	3,384	3,077	307	9.07%	10.2%	False
73.02	\$55,616	\$22,844	False	1,123	1,077	46	4.10%	10.2%	False
74.00	\$37,056	\$22,844	False	4,478	3,952	526	11.75%	10.2%	True
75.01	\$35,084	\$22,844	False	2,941	2,576	365	12.41%	10.2%	True
75.02	\$42,818	\$22,844	False	2,271	2,144	127	5.59%	10.2%	False
76.00	\$57,230	\$22,844	False	2,710	2,571	139	5.13%	10.2%	False
77.01	\$51,323	\$22,844	False	3,003	2,795	208	6.93%	10.2%	False
77.02	\$38,290	\$22,844	False	2,899	2,591	308	10.62%	10.2%	True
78.00	\$29,675	\$22,844	False	3,851	3,592	259	6.73%	10.2%	False
79.03	\$45,027	\$22,844	False	3,654	3,273	381	10.43%	10.2%	True
79.05	\$35,191	\$22,844	False	1,529	1,355	174	11.38%	10.2%	True
79.07	\$41,298	\$22,844	False	2,367	2,243	124	5.24%	10.2%	False
79.08	\$39,060	\$22,844	False	2,332	2,153	179	7.68%	10.2%	False
79.10	\$44,387	\$22,844	False	2,302	2,127	175	7.60%	10.2%	False
80.02	\$71,813	\$22,844	False	1,509	1,444	65	4.31%	10.2%	False
80.03	\$55,504	\$22,844	False	2,465	2,422	43	1.74%	10.2%	False
80.06	\$58,596	\$22,844	False	2,861	2,694	167	5.84%	10.2%	False
81.01	\$58,342	\$22,844	False	2,044	1,863	181	8.86%	10.2%	False
81.02	\$74,101	\$22,844	False	1,747	1,703	44	2.52%	10.2%	False
82.00	\$85,309	\$22,844	False	1,277	1,207	70	5.48%	10.2%	False
83.01	\$54,469	\$22,844	False	993	958	35	3.52%	10.2%	False
83.03	\$87,270	\$22,844	False	1,464	1,392	72	4.92%	10.2%	False
83.05	\$13,088	\$22,844	True	1,612	1,363	249	15.45%	10.2%	True
83.06	\$48,524	\$22,844	False	1,679	1,488	191	11.38%	10.2%	True
83.07	\$48,106	\$22,844	False	1,943	1,896	47	2.42%	10.2%	False
83.10	\$91,981	\$22,844	False	2,518	2,406	112	4.45%	10.2%	False
83.11	\$97,087	\$22,844	False	1,236	1,116	120	9.71%	10.2%	False
83.12	\$80,205	\$22,844	False	1,885	1,798	87	4.62%	10.2%	False
83.13	\$87,181	\$22,844	False	1,033	996	37	3.58%	10.2%	False
83.24	\$72,017	\$22,844	False	3,649	3,512	137	3.75%	10.2%	False
83.27	\$64,070	\$22,844	False	3,231	3,051	180	5.57%	10.2%	False
83.28	\$76,546	\$22,844	False	2,319	2,161	158	6.81%	10.2%	False
83.29	\$47,564	\$22,844	False	3,964	3,606	358	9.03%	10.2%	False
83.30	\$53,629	\$22,844	False	2,911	2,614	297	10.20%	10.2%	True



Census Tract	2014 ACS Per Capita Income (PCI) Criteria			2014 ACS Civilian Labor Force and Unemployment Rate Criteria					
	PCI	80% of the US PCI	Meets EDA PCI Criteria <sup>2</sup>	Civilian Labor Force	Civilian Employment	Civilian Unemployment	Unemployment Rate	1 % higher than US Unemp. Rate	Meets EDA Unemployment Criteria <sup>1</sup>
83.31	\$64,137	\$22,844	False	1,503	1,428	75	4.99%	10.2%	False
83.33	\$61,624	\$22,844	False	7,056	6,717	339	4.80%	10.2%	False
83.35	\$47,692	\$22,844	False	5,761	5,403	358	6.21%	10.2%	False
83.36	\$47,127	\$22,844	False	1,283	1,207	76	5.92%	10.2%	False
83.37	\$39,610	\$22,844	False	2,430	2,178	252	10.37%	10.2%	True
83.39	\$29,641	\$22,844	False	1,497	1,449	48	3.21%	10.2%	False
83.40	\$48,237	\$22,844	False	5,058	4,761	297	5.87%	10.2%	False
83.41	\$40,627	\$22,844	False	3,803	3,573	230	6.05%	10.2%	False
83.43	\$25,751	\$22,844	False	2,724	2,654	70	2.57%	10.2%	False
83.44	\$49,946	\$22,844	False	1,615	1,467	148	9.16%	10.2%	False
83.45	\$48,180	\$22,844	False	1,917	1,797	120	6.26%	10.2%	False
83.46	\$46,923	\$22,844	False	3,002	2,836	166	5.53%	10.2%	False
83.47	\$33,337	\$22,844	False	3,815	3,524	291	7.63%	10.2%	False
83.48	\$36,402	\$22,844	False	3,332	2,904	428	12.85%	10.2%	True
83.49	\$27,498	\$22,844	False	1,976	1,688	288	14.57%	10.2%	True
83.50	\$38,446	\$22,844	False	4,243	4,035	208	4.90%	10.2%	False
83.51	\$27,955	\$22,844	False	2,642	2,345	297	11.24%	10.2%	True
83.52	\$29,520	\$22,844	False	2,165	2,045	120	5.54%	10.2%	False
83.53	\$30,202	\$22,844	False	2,966	2,723	243	8.19%	10.2%	False
83.54	\$37,666	\$22,844	False	3,743	3,506	237	6.33%	10.2%	False
83.55	\$31,923	\$22,844	False	2,287	2,113	174	7.61%	10.2%	False
83.56	\$32,375	\$22,844	False	2,211	2,064	147	6.65%	10.2%	False
83.57	\$28,167	\$22,844	False	2,844	2,636	208	7.31%	10.2%	False
83.58	\$26,338	\$22,844	False	4,335	3,964	371	8.56%	10.2%	False
83.59	\$27,899	\$22,844	False	2,608	2,330	278	10.66%	10.2%	True
83.60	\$32,579	\$22,844	False	3,920	3,587	333	8.49%	10.2%	False
83.61	\$34,167	\$22,844	False	1,873	1,628	245	13.08%	10.2%	True
83.62	\$42,168	\$22,844	False	1,917	1,760	157	8.19%	10.2%	False
83.63	\$26,611	\$22,844	False	2,830	2,731	99	3.50%	10.2%	False
83.64	\$40,644	\$22,844	False	3,204	3,032	172	5.37%	10.2%	False
83.65	\$47,851	\$22,844	False	1,651	1,537	114	6.90%	10.2%	False
83.66	\$45,060	\$22,844	False	3,303	3,058	245	7.42%	10.2%	False
85.01	\$36,391	\$22,844	False	3,336	3,050	286	8.57%	10.2%	False
85.02	\$31,660	\$22,844	False	3,591	3,253	338	9.41%	10.2%	False
85.03	\$38,241	\$22,844	False	4,003	3,599	404	10.09%	10.2%	False
85.04	\$32,876	\$22,844	False	2,879	2,668	211	7.33%	10.2%	False
85.05	\$28,480	\$22,844	False	3,602	3,098	504	13.99%	10.2%	True
85.06	\$30,054	\$22,844	False	2,560	2,426	134	5.23%	10.2%	False
85.07	\$29,082	\$22,844	False	4,174	3,890	284	6.80%	10.2%	False
85.09	\$31,443	\$22,844	False	3,987	3,569	418	10.48%	10.2%	True
85.10	\$33,433	\$22,844	False	3,851	3,529	322	8.36%	10.2%	False

Census Tract	2014 ACS Per Capita Income (PCI) Criteria			2014 ACS Civilian Labor Force and Unemployment Rate Criteria					
	PCI	80% of the US PCI	Meets EDA PCI Criteria <sup>2</sup>	Civilian Labor Force	Civilian Employment	Civilian Unemployment	Unemployment Rate	1 % higher than US Unemp. Rate	Meets EDA Unemployment Criteria <sup>1</sup>
85.11	\$39,784	\$22,844	False	1,694	1,591	103	6.08%	10.2%	False
85.12	\$34,654	\$22,844	False	2,192	2,029	163	7.44%	10.2%	False
85.13	\$37,571	\$22,844	False	1,718	1,639	79	4.60%	10.2%	False
86.00	\$17,205	\$22,844	True	3,670	3,339	331	9.02%	10.2%	False
87.01	\$25,010	\$22,844	False	1,451	1,275	176	12.13%	10.2%	True
87.02	\$28,174	\$22,844	False	2,596	2,412	184	7.09%	10.2%	False
88.00	\$16,854	\$22,844	True	3,100	2,670	430	13.87%	10.2%	True
89.01	\$37,309	\$22,844	False	3,212	2,918	294	9.15%	10.2%	False
89.02	\$41,253	\$22,844	False	1,393	1,355	38	2.73%	10.2%	False
90.00	\$24,469	\$22,844	False	2,033	1,892	141	6.94%	10.2%	False
91.01	\$45,567	\$22,844	False	3,111	2,790	321	10.32%	10.2%	True
91.02	\$26,058	\$22,844	False	2,307	2,111	196	8.50%	10.2%	False
91.03	\$41,724	\$22,844	False	2,018	1,813	205	10.16%	10.2%	False
91.04	\$44,173	\$22,844	False	1,588	1,519	69	4.35%	10.2%	False
91.06	\$17,495	\$22,844	True	1,838	1,689	149	8.11%	10.2%	False
91.07	\$30,968	\$22,844	False	2,576	2,408	168	6.52%	10.2%	False
92.01	\$24,123	\$22,844	False	2,039	1,753	286	14.03%	10.2%	True
92.02	\$39,675	\$22,844	False	2,637	2,564	73	2.77%	10.2%	False
93.01	\$33,091	\$22,844	False	2,825	2,517	308	10.90%	10.2%	True
93.04	\$43,179	\$22,844	False	5,489	5,148	341	6.21%	10.2%	False
93.05	\$37,195	\$22,844	False	2,696	2,472	224	8.31%	10.2%	False
93.06	\$38,201	\$22,844	False	3,760	3,574	186	4.95%	10.2%	False
94.00	\$24,280	\$22,844	False	401	360	41	10.22%	10.2%	True
95.02	\$36,052	\$22,844	False	1,986	1,837	149	7.50%	10.2%	False
95.04	\$62,530	\$22,844	False	3,188	3,105	83	2.60%	10.2%	False
95.05	\$51,672	\$22,844	False	4,201	3,967	234	5.57%	10.2%	False
95.06	\$42,937	\$22,844	False	2,360	2,220	140	5.93%	10.2%	False
95.07	\$49,578	\$22,844	False	1,938	1,821	117	6.04%	10.2%	False
95.09	\$45,788	\$22,844	False	2,238	2,140	98	4.38%	10.2%	False
95.10	\$15,951	\$22,844	True	905	780	125	13.81%	10.2%	True
95.11	\$13,793	\$22,844	True	664	552	112	16.87%	10.2%	True
96.02	\$41,072	\$22,844	False	1,888	1,748	140	7.42%	10.2%	False
96.03	\$32,795	\$22,844	False	3,119	2,761	358	11.48%	10.2%	True
96.04	\$30,657	\$22,844	False	1,954	1,814	140	7.16%	10.2%	False
97.03	\$32,233	\$22,844	False	1,710	1,536	174	10.18%	10.2%	False
97.04	\$40,211	\$22,844	False	3,148	2,895	253	8.04%	10.2%	False
97.05	\$42,721	\$22,844	False	1,693	1,567	126	7.44%	10.2%	False
97.06	\$60,876	\$22,844	False	3,345	3,071	274	8.19%	10.2%	False
98.01	\$37,897	\$22,844	False	2,303	2,215	88	3.82%	10.2%	False
98.02	\$26,726	\$22,844	False	3,250	2,909	341	10.49%	10.2%	True
98.04	\$35,880	\$22,844	False	2,422	2,313	109	4.50%	10.2%	False

Census Tract	2014 ACS Per Capita Income (PCI) Criteria			2014 ACS Civilian Labor Force and Unemployment Rate Criteria					
	PCI	80% of the US PCI	Meets EDA PCI Criteria <sup>2</sup>	Civilian Labor Force	Civilian Employment	Civilian Unemployment	Unemployment Rate	1 % higher than US Unemp. Rate	Meets EDA Unemployment Criteria <sup>1</sup>
98.05	\$36,822	\$22,844	False	3,095	2,906	189	6.11%	10.2%	False
99.01	\$30,928	\$22,844	False	6	6	0	0.00%	10.2%	False
99.02	\$34,390	\$22,844	False	0	0	0	0.00%	10.2%	False
100.01	\$24,574	\$22,844	False	1,810	1,670	140	7.73%	10.2%	False
100.03	\$20,151	\$22,844	True	3,166	2,608	558	17.62%	10.2%	True
100.04	\$17,185	\$22,844	True	2,095	1,644	451	21.53%	10.2%	True
100.05	\$12,237	\$22,844	True	3,543	2,867	676	19.08%	10.2%	True
100.09	\$13,637	\$22,844	True	3,191	2,742	449	14.07%	10.2%	True
100.10	\$16,638	\$22,844	True	2,595	2,233	362	13.95%	10.2%	True
100.11	\$17,696	\$22,844	True	1,920	1,687	233	12.14%	10.2%	True
100.12	\$13,484	\$22,844	True	2,141	1,857	284	13.26%	10.2%	True
100.13	\$9,799	\$22,844	True	2,554	2,060	494	19.34%	10.2%	True
100.14	\$20,575	\$22,844	True	8,210	7,639	571	6.95%	10.2%	False
100.15	\$20,641	\$22,844	True	1,217	1,123	94	7.72%	10.2%	False
101.03	\$14,201	\$22,844	True	3,207	2,750	457	14.25%	10.2%	True
101.04	\$23,656	\$22,844	False	1,565	1,362	203	12.97%	10.2%	True
101.06	\$12,921	\$22,844	True	2,674	2,280	394	14.73%	10.2%	True
101.07	\$19,561	\$22,844	True	3,682	3,072	610	16.57%	10.2%	True
101.09	\$20,954	\$22,844	True	2,165	1,889	276	12.75%	10.2%	True
101.10	\$17,538	\$22,844	True	3,393	3,022	371	10.93%	10.2%	True
101.11	\$12,180	\$22,844	True	1,384	1,024	360	26.01%	10.2%	True
101.12	\$12,809	\$22,844	True	2,427	1,905	522	21.51%	10.2%	True
102.00	\$25,383	\$22,844	False	2,695	2,332	363	13.47%	10.2%	True
103.00	\$19,660	\$22,844	True	2,119	1,794	325	15.34%	10.2%	True
104.01	\$17,560	\$22,844	True	1,162	993	169	14.54%	10.2%	True
104.02	\$15,677	\$22,844	True	2,695	2,221	474	17.59%	10.2%	True
105.01	\$30,242	\$22,844	False	747	634	113	15.13%	10.2%	True
105.02	\$16,249	\$22,844	True	2,875	2,540	335	11.65%	10.2%	True
106.01	\$57,908	\$22,844	False	1,106	1,095	11	0.99%	10.2%	False
108.00	\$53,524	\$22,844	False	1,285	1,170	115	8.95%	10.2%	False
109.00	\$60,656	\$22,844	False	976	930	46	4.71%	10.2%	False
110.00	\$47,159	\$22,844	False	1,574	1,509	65	4.13%	10.2%	False
111.00	\$52,933	\$22,844	False	1,993	1,877	116	5.82%	10.2%	False
113.00	\$28,454	\$22,844	False	38	38	0	0.00%	10.2%	False
116.01	\$11,973	\$22,844	True	2,447	2,054	393	16.06%	10.2%	True
116.02	\$16,303	\$22,844	True	1,496	1,317	179	11.97%	10.2%	True
117.00	\$15,350	\$22,844	True	2,851	2,615	236	8.28%	10.2%	False
118.01	\$14,246	\$22,844	True	1,664	1,466	198	11.90%	10.2%	True
118.02	\$12,777	\$22,844	True	3,472	3,159	313	9.01%	10.2%	False
119.02	\$18,888	\$22,844	True	2,590	2,221	369	14.25%	10.2%	True
120.02	\$17,985	\$22,844	True	1,703	1,528	175	10.28%	10.2%	True



Census Tract	2014 ACS Per Capita Income (PCI) Criteria			2014 ACS Civilian Labor Force and Unemployment Rate Criteria					
	PCI	80% of the US PCI	Meets EDA PCI Criteria <sup>2</sup>	Civilian Labor Force	Civilian Employment	Civilian Unemployment	Unemployment Rate	1 % higher than US Unemp. Rate	Meets EDA Unemployment Criteria <sup>1</sup>
120.03	\$19,265	\$22,844	True	1,774	1,578	196	11.05%	10.2%	True
121.01	\$20,338	\$22,844	True	1,142	1,007	135	11.82%	10.2%	True
121.02	\$16,050	\$22,844	True	1,902	1,675	227	11.93%	10.2%	True
122.00	\$17,734	\$22,844	True	1,631	1,371	260	15.94%	10.2%	True
123.02	\$20,778	\$22,844	True	757	724	33	4.36%	10.2%	False
123.03	\$24,432	\$22,844	False	1,392	1,210	182	13.07%	10.2%	True
123.04	\$30,522	\$22,844	False	1,588	1,449	139	8.75%	10.2%	False
124.01	\$16,121	\$22,844	True	1,758	1,358	400	22.75%	10.2%	True
124.02	\$17,208	\$22,844	True	2,442	2,133	309	12.65%	10.2%	True
125.01	\$14,838	\$22,844	True	1,378	1,146	232	16.84%	10.2%	True
125.02	\$15,552	\$22,844	True	2,012	1,733	279	13.87%	10.2%	True
126.00	\$17,899	\$22,844	True	2,008	1,679	329	16.38%	10.2%	True
127.00	\$16,135	\$22,844	True	2,235	1,938	297	13.29%	10.2%	True
128.00	\$21,901	\$22,844	True	1,993	1,632	361	18.11%	10.2%	True
129.00	\$24,016	\$22,844	False	1,559	1,323	236	15.14%	10.2%	True
130.00	\$19,469	\$22,844	True	2,845	2,387	458	16.10%	10.2%	True
131.02	\$17,941	\$22,844	True	3,487	2,870	617	17.69%	10.2%	True
131.03	\$16,132	\$22,844	True	1,241	1,080	161	12.97%	10.2%	True
131.04	\$15,752	\$22,844	True	2,726	2,230	496	18.20%	10.2%	True
132.03	\$12,359	\$22,844	True	3,067	2,336	731	23.83%	10.2%	True
132.04	\$15,091	\$22,844	True	2,237	1,743	494	22.08%	10.2%	True
132.05	\$13,225	\$22,844	True	1,053	856	197	18.71%	10.2%	True
132.06	\$15,124	\$22,844	True	3,113	2,479	634	20.37%	10.2%	True
133.01	\$24,154	\$22,844	False	2,699	2,278	421	15.60%	10.2%	True
133.02	\$22,070	\$22,844	True	2,345	1,935	410	17.48%	10.2%	True
133.03	\$22,878	\$22,844	False	3,007	2,481	526	17.49%	10.2%	True
133.06	\$22,309	\$22,844	True	2,214	2,011	203	9.17%	10.2%	False
133.07	\$16,337	\$22,844	True	1,859	1,505	354	19.04%	10.2%	True
133.08	\$16,239	\$22,844	True	1,871	1,554	317	16.94%	10.2%	True
133.09	\$26,719	\$22,844	False	3,844	3,471	373	9.70%	10.2%	False
133.10	\$26,536	\$22,844	False	13,047	12,096	951	7.29%	10.2%	False
133.11	\$33,122	\$22,844	False	5,091	4,865	226	4.44%	10.2%	False
133.12	\$23,882	\$22,844	False	1,539	1,429	110	7.15%	10.2%	False
133.13	\$30,036	\$22,844	False	5,642	5,361	281	4.98%	10.2%	False
133.14	\$27,945	\$22,844	False	7,883	7,128	755	9.58%	10.2%	False
134.01	\$31,437	\$22,844	False	2,576	2,245	331	12.85%	10.2%	True
134.09	\$30,583	\$22,844	False	2,823	2,408	415	14.70%	10.2%	True
134.10	\$38,714	\$22,844	False	3,502	3,380	122	3.48%	10.2%	False
134.11	\$39,307	\$22,844	False	2,962	2,707	255	8.61%	10.2%	False
134.12	\$34,301	\$22,844	False	2,429	2,161	268	11.03%	10.2%	True
134.14	\$33,155	\$22,844	False	4,071	3,804	267	6.56%	10.2%	False

Census Tract	2014 ACS Per Capita Income (PCI) Criteria			2014 ACS Civilian Labor Force and Unemployment Rate Criteria					
	PCI	80% of the US PCI	Meets EDA PCI Criteria <sup>2</sup>	Civilian Labor Force	Civilian Employment	Civilian Unemployment	Unemployment Rate	1 % higher than US Unemp. Rate	Meets EDA Unemployment Criteria <sup>1</sup>
134.15	\$32,094	\$22,844	False	864	788	76	8.80%	10.2%	False
134.16	\$36,108	\$22,844	False	1,780	1,652	128	7.19%	10.2%	False
134.17	\$36,426	\$22,844	False	1,103	889	214	19.40%	10.2%	True
134.18	\$26,881	\$22,844	False	3,233	2,877	356	11.01%	10.2%	True
134.19	\$34,746	\$22,844	False	3,858	3,571	287	7.44%	10.2%	False
134.20	\$28,295	\$22,844	False	2,266	1,893	373	16.46%	10.2%	True
134.21	\$32,328	\$22,844	False	2,597	2,258	339	13.05%	10.2%	True
135.03	\$24,747	\$22,844	False	2,759	2,298	461	16.71%	10.2%	True
135.04	\$32,398	\$22,844	False	1,918	1,778	140	7.30%	10.2%	False
135.05	\$27,867	\$22,844	False	2,546	2,316	230	9.03%	10.2%	False
135.06	\$22,847	\$22,844	False	2,121	1,747	374	17.63%	10.2%	True
136.01	\$34,583	\$22,844	False	2,613	2,312	301	11.52%	10.2%	True
136.04	\$30,537	\$22,844	False	2,845	2,483	362	12.72%	10.2%	True
136.05	\$45,893	\$22,844	False	3,148	2,905	243	7.72%	10.2%	False
136.06	\$29,999	\$22,844	False	3,381	3,079	302	8.93%	10.2%	False
137.01	\$41,326	\$22,844	False	1,181	1,118	63	5.33%	10.2%	False
137.02	\$22,179	\$22,844	True	2,811	2,506	305	10.85%	10.2%	True
138.01	\$31,881	\$22,844	False	2,563	2,325	238	9.29%	10.2%	False
138.02	\$16,836	\$22,844	True	1,419	1,266	153	10.78%	10.2%	True
139.03	\$23,204	\$22,844	False	2,105	1,951	154	7.32%	10.2%	False
139.05	\$31,332	\$22,844	False	2,064	1,846	218	10.56%	10.2%	True
139.06	\$22,394	\$22,844	True	2,475	2,005	470	18.99%	10.2%	True
139.07	\$15,233	\$22,844	True	1,957	1,674	283	14.46%	10.2%	True
139.08	\$19,243	\$22,844	True	1,999	1,716	283	14.16%	10.2%	True
139.09	\$20,662	\$22,844	True	1,747	1,481	266	15.23%	10.2%	True
140.01	\$20,185	\$22,844	True	2,241	2,024	217	9.68%	10.2%	False
140.02	\$21,796	\$22,844	True	2,307	2,048	259	11.23%	10.2%	True
141.01	\$23,393	\$22,844	False	1,986	1,620	366	18.43%	10.2%	True
141.02	\$21,208	\$22,844	True	1,659	1,297	362	21.82%	10.2%	True
142.00	\$24,517	\$22,844	False	3,152	2,695	457	14.50%	10.2%	True
143.00	\$22,775	\$22,844	True	2,027	1,851	176	8.68%	10.2%	False
144.00	\$16,458	\$22,844	True	1,546	1,312	234	15.14%	10.2%	True
145.00	\$22,964	\$22,844	False	1,900	1,570	330	17.37%	10.2%	True
146.01	\$27,818	\$22,844	False	2,680	2,512	168	6.27%	10.2%	False
146.02	\$38,720	\$22,844	False	2,410	2,265	145	6.02%	10.2%	False
147.00	\$31,466	\$22,844	False	4,674	4,223	451	9.65%	10.2%	False
148.03	\$30,300	\$22,844	False	2,530	2,105	425	16.80%	10.2%	True
148.04	\$33,693	\$22,844	False	1,863	1,639	224	12.02%	10.2%	True
148.05	\$27,568	\$22,844	False	2,680	2,445	235	8.77%	10.2%	False
148.06	\$33,809	\$22,844	False	1,142	1,046	96	8.41%	10.2%	False
149.01	\$29,546	\$22,844	False	2,208	1,946	262	11.87%	10.2%	True

Census Tract	2014 ACS Per Capita Income (PCI) Criteria			2014 ACS Civilian Labor Force and Unemployment Rate Criteria					
	PCI	80% of the US PCI	Meets EDA PCI Criteria <sup>2</sup>	Civilian Labor Force	Civilian Employment	Civilian Unemployment	Unemployment Rate	1 % higher than US Unemp. Rate	Meets EDA Unemployment Criteria <sup>1</sup>
149.02	\$32,188	\$22,844	False	1,902	1,782	120	6.31%	10.2%	False
150.00	\$29,930	\$22,844	False	3,481	3,201	280	8.04%	10.2%	False
151.00	\$29,714	\$22,844	False	2,692	2,508	184	6.84%	10.2%	False
152.00	\$49,669	\$22,844	False	1,894	1,772	122	6.44%	10.2%	False
153.01	\$18,390	\$22,844	True	1,768	1,402	366	20.70%	10.2%	True
153.02	\$36,497	\$22,844	False	1,827	1,609	218	11.93%	10.2%	True
154.03	\$45,196	\$22,844	False	1,182	1,059	123	10.41%	10.2%	True
154.04	\$19,650	\$22,844	True	3,290	2,596	694	21.09%	10.2%	True
154.05	\$33,517	\$22,844	False	3,194	2,909	285	8.92%	10.2%	False
154.06	\$48,514	\$22,844	False	1,263	1,109	154	12.19%	10.2%	True
155.01	\$30,470	\$22,844	False	2,869	2,640	229	7.98%	10.2%	False
155.02	\$33,324	\$22,844	False	1,297	1,260	37	2.85%	10.2%	False
156.01	\$20,619	\$22,844	True	3,467	2,990	477	13.76%	10.2%	True
156.02	\$43,275	\$22,844	False	1,391	1,276	115	8.27%	10.2%	False
157.01	\$13,597	\$22,844	True	3,031	2,506	525	17.32%	10.2%	True
157.03	\$12,166	\$22,844	True	2,971	2,320	651	21.91%	10.2%	True
157.04	\$16,915	\$22,844	True	2,352	2,038	314	13.35%	10.2%	True
158.01	\$13,181	\$22,844	True	1,628	1,387	241	14.80%	10.2%	True
158.02	\$16,699	\$22,844	True	1,796	1,433	363	20.21%	10.2%	True
159.01	\$9,648	\$22,844	True	1,566	1,205	361	23.05%	10.2%	True
159.02	\$18,472	\$22,844	True	2,499	2,153	346	13.85%	10.2%	True
160.00	\$28,054	\$22,844	False	1,321	1,201	120	9.08%	10.2%	False
161.00	\$32,125	\$22,844	False	3,660	3,248	412	11.26%	10.2%	True
162.01	\$42,661	\$22,844	False	2,893	2,600	293	10.13%	10.2%	False
162.02	\$21,279	\$22,844	True	1,811	1,609	202	11.15%	10.2%	True
163.01	\$15,408	\$22,844	True	2,607	2,226	381	14.61%	10.2%	True
163.02	\$15,664	\$22,844	True	2,542	2,025	517	20.34%	10.2%	True
164.01	\$27,562	\$22,844	False	2,448	2,142	306	12.50%	10.2%	True
164.02	\$24,366	\$22,844	False	3,619	3,016	603	16.66%	10.2%	True
165.02	\$18,713	\$22,844	True	3,462	3,089	373	10.77%	10.2%	True
165.03	\$19,733	\$22,844	True	1,419	1,307	112	7.89%	10.2%	False
165.04	\$16,814	\$22,844	True	3,432	3,001	431	12.56%	10.2%	True
166.05	\$32,623	\$22,844	False	4,007	3,517	490	12.23%	10.2%	True
166.06	\$31,028	\$22,844	False	2,200	1,984	216	9.82%	10.2%	False
166.07	\$34,742	\$22,844	False	3,060	2,858	202	6.60%	10.2%	False
166.08	\$34,280	\$22,844	False	1,511	1,368	143	9.46%	10.2%	False
166.09	\$30,527	\$22,844	False	2,576	2,365	211	8.19%	10.2%	False
166.10	\$28,628	\$22,844	False	2,236	1,929	307	13.73%	10.2%	True
166.12	\$35,849	\$22,844	False	3,409	3,290	119	3.49%	10.2%	False
166.13	\$29,787	\$22,844	False	1,081	987	94	8.70%	10.2%	False
166.14	\$28,551	\$22,844	False	2,394	2,138	256	10.69%	10.2%	True

Census Tract	2014 ACS Per Capita Income (PCI) Criteria			2014 ACS Civilian Labor Force and Unemployment Rate Criteria					
	PCI	80% of the US PCI	Meets EDA PCI Criteria <sup>2</sup>	Civilian Labor Force	Civilian Employment	Civilian Unemployment	Unemployment Rate	1 % higher than US Unemp. Rate	Meets EDA Unemployment Criteria <sup>1</sup>
166.15	\$24,958	\$22,844	False	1,200	1,092	108	9.00%	10.2%	False
166.16	\$23,806	\$22,844	False	1,875	1,653	222	11.84%	10.2%	True
166.17	\$25,008	\$22,844	False	1,577	1,450	127	8.05%	10.2%	False
167.01	\$28,675	\$22,844	False	5,253	4,562	691	13.15%	10.2%	True
167.02	\$27,400	\$22,844	False	3,276	3,044	232	7.08%	10.2%	False
168.04	\$21,785	\$22,844	True	3,448	2,996	452	13.11%	10.2%	True
168.06	\$20,189	\$22,844	True	2,001	1,734	267	13.34%	10.2%	True
168.07	\$30,393	\$22,844	False	3,802	3,470	332	8.73%	10.2%	False
168.09	\$28,906	\$22,844	False	2,575	2,383	192	7.46%	10.2%	False
168.10	\$29,813	\$22,844	False	1,712	1,390	322	18.81%	10.2%	True
168.11	\$29,963	\$22,844	False	1,919	1,787	132	6.88%	10.2%	False
169.01	\$32,310	\$22,844	False	2,764	2,584	180	6.51%	10.2%	False
170.06	\$55,355	\$22,844	False	1,394	1,283	111	7.96%	10.2%	False
170.14	\$41,211	\$22,844	False	650	577	73	11.23%	10.2%	True
170.15	\$40,641	\$22,844	False	4,260	4,060	200	4.69%	10.2%	False
170.18	\$29,945	\$22,844	False	2,396	2,202	194	8.10%	10.2%	False
170.19	\$44,880	\$22,844	False	2,793	2,469	324	11.60%	10.2%	True
170.22	\$41,718	\$22,844	False	2,683	2,455	228	8.50%	10.2%	False
170.29	\$68,474	\$22,844	False	3,643	3,509	134	3.68%	10.2%	False
170.30	\$52,456	\$22,844	False	9,554	9,130	424	4.44%	10.2%	False
170.31	\$35,973	\$22,844	False	2,023	1,943	80	3.95%	10.2%	False
170.32	\$43,803	\$22,844	False	6,823	6,463	360	5.28%	10.2%	False
170.33	\$40,255	\$22,844	False	2,714	2,585	129	4.75%	10.2%	False
170.34	\$35,369	\$22,844	False	2,899	2,659	240	8.28%	10.2%	False
170.35	\$27,715	\$22,844	False	1,323	1,042	281	21.24%	10.2%	True
170.36	\$33,658	\$22,844	False	1,953	1,797	156	7.99%	10.2%	False
170.37	\$39,970	\$22,844	False	3,156	2,885	271	8.59%	10.2%	False
170.39	\$44,994	\$22,844	False	4,126	3,835	291	7.05%	10.2%	False
170.42	\$44,944	\$22,844	False	4,161	3,999	162	3.89%	10.2%	False
170.43	\$48,395	\$22,844	False	3,503	3,345	158	4.51%	10.2%	False
170.44	\$45,827	\$22,844	False	2,753	2,634	119	4.32%	10.2%	False
170.45	\$55,263	\$22,844	False	1,339	1,225	114	8.51%	10.2%	False
170.46	\$53,760	\$22,844	False	1,796	1,743	53	2.95%	10.2%	False
170.47	\$52,107	\$22,844	False	2,014	1,840	174	8.64%	10.2%	False
170.51	\$43,053	\$22,844	False	2,287	2,216	71	3.10%	10.2%	False
170.52	\$43,851	\$22,844	False	2,686	2,501	185	6.89%	10.2%	False
170.55	\$48,219	\$22,844	False	2,823	2,696	127	4.50%	10.2%	False
170.56	\$42,044	\$22,844	False	2,466	2,347	119	4.83%	10.2%	False
171.06	\$60,171	\$22,844	False	1,741	1,609	132	7.58%	10.2%	False
171.10	\$51,475	\$22,844	False	4,305	4,001	304	7.06%	10.2%	False
173.04	\$53,276	\$22,844	False	3,624	3,228	396	10.93%	10.2%	True

Census Tract	2014 ACS Per Capita Income (PCI) Criteria			2014 ACS Civilian Labor Force and Unemployment Rate Criteria					
	PCI	80% of the US PCI	Meets EDA PCI Criteria <sup>2</sup>	Civilian Labor Force	Civilian Employment	Civilian Unemployment	Unemployment Rate	1 % higher than US Unemp. Rate	Meets EDA Unemployment Criteria <sup>1</sup>
173.06	\$76,332	\$22,844	False	1,218	1,173	45	3.69%	10.2%	False
204.01	\$48,680	\$22,844	False	1,341	1,197	144	10.74%	10.2%	True
207.06	\$44,390	\$22,844	False	3,215	2,901	314	9.77%	10.2%	False
207.09	\$31,401	\$22,844	False	3,925	3,617	308	7.85%	10.2%	False
207.10	\$58,646	\$22,844	False	880	817	63	7.16%	10.2%	False
208.01	\$43,136	\$22,844	False	2,682	2,418	264	9.84%	10.2%	False
208.07	\$42,720	\$22,844	False	1,300	1,173	127	9.77%	10.2%	False
211.00	\$25,775	\$22,844	False	2,920	2,527	393	13.46%	10.2%	True
212.02	\$33,092	\$22,844	False	1,501	1,352	149	9.93%	10.2%	False
212.04	\$44,132	\$22,844	False	2,756	2,635	121	4.39%	10.2%	False
212.05	\$28,858	\$22,844	False	3,924	3,601	323	8.23%	10.2%	False
212.06	\$45,701	\$22,844	False	1,347	1,223	124	9.21%	10.2%	False
213.02	\$23,652	\$22,844	False	2,130	1,967	163	7.65%	10.2%	False
213.03	\$43,807	\$22,844	False	4,041	3,615	426	10.54%	10.2%	True
213.04	\$39,610	\$22,844	False	1,463	1,384	79	5.40%	10.2%	False
214.00	\$36,085	\$22,844	False	2,944	2,788	156	5.30%	10.2%	False
215.00	\$63,491	\$22,844	False	4,222	4,105	117	2.77%	10.2%	False
216.00	\$31,883	\$22,844	False	666	570	96	14.41%	10.2%	True
218.00	\$62,773	\$22,844	False	879	840	39	4.44%	10.2%	False
219.00	\$29,632	\$22,844	False	838	707	131	15.63%	10.2%	True
220.00	\$14,493	\$22,844	True	2,037	1,643	394	19.34%	10.2%	True
				1,148,292	1,033,767	114,525	10.0%		

Source: U.S. Census Bureau, 2010-2014, 5-Year American Community Survey; compiled by SANDAG  
 Census tracts used are 2010 census tracts.

ACS Criteria	2014
<sup>1</sup> National Unemployment Rate	9.2%
Meets EDA Criteria-Greater than 1% National Unemployment Rate	10.2%
	<b>2014</b>
<sup>2</sup> National Per Capita Income (PCI)	\$28,555
Meets EDA Criteria-Equal or less than 80% PCI	\$22,844