

287
BROOKSHIRE ESTATES
SECTION II
PLAT BOOK 25, PAGE 245

CERTIFICATE OF OWNERSHIP AND DESIGN
I, the undersigned, do hereby certify that I am (we) the owner(s) of the property shown and described herein on the plat hereon attached, and that the plat is correct and true to the original survey, and that the same has been approved for recording in the Office of the County Register of Deeds.
Date: Jan 27 2006
Record Book 492

CERTIFICATE OF APPROVAL FOR RECORDING
I hereby certify that the subdivision plat herein has been found to conform to the requirements of the Uniform Subdivision Plat Act, and that the same has been approved for recording in the Office of the County Register of Deeds.
Date: 2-17-06 2006
City Engineer: J. P. O'Connell

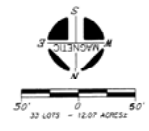
CERTIFICATE OF APPROVAL OF STREETS AND HIGHWAYS
I hereby certify that (1) the street, driveway, and drainage easements for the subdivision shown herein have been approved in accordance with City Section 33-35 (b) to ensure that the same will be constructed and maintained in accordance with the City of Murfreesboro to ensure compliance with the National Flood Insurance Program.
Date: 2-23 2006
City Engineer: Chris Hill

CERTIFICATE OF APPROVAL OF WATER SYSTEMS
I hereby certify that (1) the water uses and requirements for the water system of the subdivision shown herein have been approved in accordance with City Section 33-35 (b) to ensure that the same will be constructed and maintained in accordance with the City of Murfreesboro to ensure compliance with the National Flood Insurance Program.
Date: 2-28 2006
Water Utility Director: Ken W. Goo

CERTIFICATE OF APPROVAL OF SEWER SYSTEMS
I hereby certify that (1) the sewer uses and requirements for the sewer system of the subdivision shown herein have been approved in accordance with City Section 33-35 (b) to ensure that the same will be constructed and maintained in accordance with the City of Murfreesboro to ensure compliance with the National Flood Insurance Program.
Date: 2-24 2006
Sewer Utility Director: Ken W. Goo

CERTIFICATE OF APPROVAL FOR ELECTRIC POWER
I hereby certify that (1) the electric uses and requirements for the electric system of the subdivision shown herein have been approved in accordance with City Section 33-35 (b) to ensure that the same will be constructed and maintained in accordance with the City of Murfreesboro to ensure compliance with the National Flood Insurance Program.
Date: Jan 27 2006
Electric Power Utility Director: Will D. Judd

- PLAT NOTES
- In Tennessee, it is a requirement per The Underground Utility Damage Prevention Act that anyone who supports an excavation must notify all known underground utility owners, not less than three nor more than ten working days prior to the start of excavation. A list of these utilities may be obtained from the County Register of Deeds. These utilities may include: gas, electric, water, sewer, and telecommunications.
 - Underground utilities shown here include: electric, gas, water, sewer, and telecommunications. The existence or non-existence of these utilities is shown as shown on the plat. The plat is not intended to be a guarantee of the existence of these utilities. The plat is not intended to be a guarantee of the existence of these utilities.
 - Wherever shown on the plat, the plat is not intended to be a guarantee of the existence of these utilities.
 - Public utility and drainage easements shown shown herein are intended to indicate an easement for construction, operation, and maintenance of public utilities and drainage systems, including but not limited to: water, sewer, gas, electric, and telecommunications. Easements shown herein are subject to additional easements, and/or restrictions, and shall not be construed to be a guarantee of the existence of these utilities.
 - Plats are to be filed in the County Register of Deeds.



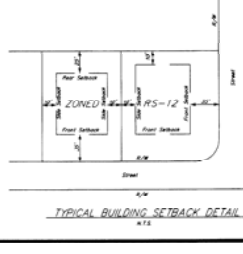
Jonathan W. Dehart, Register
Rutherford County Tennessee
Book 492 Page 299-299

Line	N.F.E.	S.F.E.
75	558.0	558.0
76	558.0	558.0
77	558.0	558.0
78	558.0	558.0

299 PAGES 299-299

LINE	LENGTH	AREA	PERCENT
L1	18.37	50.00	18.37
L2	18.37	50.00	18.37
L3	18.37	50.00	18.37
L4	18.37	50.00	18.37
L5	18.37	50.00	18.37
L6	18.37	50.00	18.37
L7	18.37	50.00	18.37
L8	18.37	50.00	18.37
L9	18.37	50.00	18.37
L10	18.37	50.00	18.37
L11	18.37	50.00	18.37
L12	18.37	50.00	18.37
L13	18.37	50.00	18.37
L14	18.37	50.00	18.37
L15	18.37	50.00	18.37
L16	18.37	50.00	18.37
L17	18.37	50.00	18.37
L18	18.37	50.00	18.37
L19	18.37	50.00	18.37
L20	18.37	50.00	18.37

NOTE: Any house or structure with a building drain to the public sanitary sewer with a floor elevation at any point below the elevation of the center of the street shall be subject to Murfreesboro City Code Section 33-35 (b)(1) which requires the owner(s) to install a sewage and stormwater treatment system in accordance with the City of Murfreesboro to ensure compliance with the National Flood Insurance Program.



DEVELOPER: PARKTRUST
ADDRESS: 201 S. CHURCH ST.
SUITE 100
MURFREESBORO, TN 37130

TAX MAP: 68 PARCEL: 1.00
FLOOD MAP PANEL: 470168 0163 F. ZONE: X
FLOOD MAP DATED: NOV. 8, 1999

NOTE: THIS PARCEL IS SUBJECT TO ALL EASEMENTS AS SHOWN AND ANY OTHER EASEMENTS AND RESTRICTIONS WHICH ARE RECORDED OR BY PRESCRIPTION THAT COMPLETE TITLE SEARCH MAY REVEAL.

DATE OF RECORDING: Jan 28, 2006
TIME OF RECORDING: 3:10 P.M.
PLAT BOOK: 29, PAGE: 299

FINAL PLAT SECTION II THE RESERVE

9TH CIVIL DISTRICT - RUTHERFORD COUNTY - TN
DATE: JANUARY, 2006 SCALE 1" = 50' SH 1 OF 1

WALSH & ASSOCIATES, INC.
113 N. BROAD STREET, MURFREESBORO, TN 37130
TEL: 615.895.1133 FAX: 615.895.1134