

APPROVED & SIGNED: REGISTERED PROFESSIONAL ENGINEER
No. 61 688012 Registered Professional Engineer
Date: 10/10/2005
Scale: 1" = 100'
Sheet: 1 of 29
Project: 29 Pages 146-146



CERTIFICATE OF OWNERSHIP AND DESIGNATION
I hereby certify that 1 am (as per) the owner(s) of the property shown on the subdivision map for this subdivision. I have reviewed the subdivision map and the information contained therein and I have approved the same for recording in the office of the County Register of Deeds.
Date: June 29, 2005
Record Book: 492
Page: 2874
Signature: Melvin Adams
Title: PLAT BOOK 29

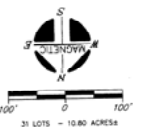
CERTIFICATE OF APPROVAL FOR RECORDING
I hereby certify that the subdivision plat when taken has been found to conform with the subdivision regulations for this subdivision. I have reviewed the subdivision map and the information contained therein and I have approved the same for recording in the office of the County Register of Deeds.
Date: 10/6/05
Signature: John D. Galt
Title: REGISTERED PROFESSIONAL ENGINEER

CERTIFICATE OF APPROVAL OF STREETS AND SIDEWALKS
I hereby certify that (1) the streets, drainage structures, and drainage improvements on the subdivision map for this subdivision have been prepared with the approval of the Board of Public Works of Rutherford County, Tennessee, and that the same shall be maintained in accordance with the provisions of the Code of Ordinances of Rutherford County, Tennessee, and that the same shall be maintained in accordance with the provisions of the Code of Ordinances of Rutherford County, Tennessee.

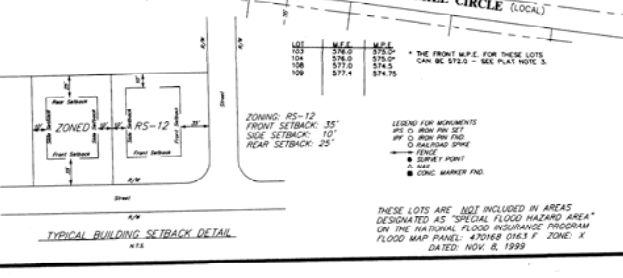
CERTIFICATE OF APPROVAL OF WATER SYSTEMS
I hereby certify that (1) the water lines and appurtenances for the water system on the subdivision map for this subdivision have been prepared with the approval of the Board of Public Works of Rutherford County, Tennessee, and that the same shall be maintained in accordance with the provisions of the Code of Ordinances of Rutherford County, Tennessee, and that the same shall be maintained in accordance with the provisions of the Code of Ordinances of Rutherford County, Tennessee.

CERTIFICATE OF APPROVAL OF SEWER SYSTEMS
I hereby certify that (1) the sewer lines and appurtenances for the sewer system on the subdivision map for this subdivision have been prepared with the approval of the Board of Public Works of Rutherford County, Tennessee, and that the same shall be maintained in accordance with the provisions of the Code of Ordinances of Rutherford County, Tennessee, and that the same shall be maintained in accordance with the provisions of the Code of Ordinances of Rutherford County, Tennessee.

CERTIFICATE OF APPROVAL FOR ELECTRIC POWER
I hereby certify that the subdivision plat has been approved by the Rutherford County Board of Public Works, Tennessee, and that the same shall be maintained in accordance with the provisions of the Code of Ordinances of Rutherford County, Tennessee, and that the same shall be maintained in accordance with the provisions of the Code of Ordinances of Rutherford County, Tennessee.



LINE TABLE and CURVE TABLE with columns for LINE BEARING, LENGTH, CURVE RADIUS, DELTA, CHORD, and CHORD BEARING.



NOTES: THESE LOTS ARE NOT INCLUDED IN AREAS DESIGNATED AS "SPECIAL FLOOD HAZARD AREA" ON THE NATIONAL FLOOD INSURANCE PROGRAM FLOOD MAP PANEL 47018-D163-F ZONE X. DATE: NOV. 8, 1999.

DATE OF RECORDING: October 11, 2005
TIME OF RECORDING: 10:45 AM
PLAT BOOK: 29, PAGE: 146
DEVELOPER: PARKTRUST
ADDRESS: 201 S. CHURCH ST.
SUITE 200
MURFREESBORO, TN 37130
TAX MAP: 68 PARCEL: 100
FLOOD MAP PANEL: 47018-D163-F ZONE X
FLOOD MAP DATED: NOV. 8, 1999
FINAL PLAT SECTION III
THE RESERVE
9TH CIVIL DISTRICT - RUTHERFORD COUNTY - TN
DATE: SEPTEMBER, 2004 SCALE 1"=100' SH 1 OF 1
04-2087