

# DIT-MCO's TestExecutive®

## Flexible and Robust

Your production demands a flexible and robust test control. DIT-MCO's TestExecutive® delivers providing automatic control for production use and advanced capabilities for engineering requirements. The result is a dynamic test environment that meets the demands of the production test floor.

DIT-MCO's TestExecutive provides the user interface for product testing. Using configurable access through a login password, TestExecutive lets you simply execute a test program or provides a full interactive interface to the test system. In production testing, the user simply selects from a list of current test programs. Once a test file is selected, the process is completely automated through the test programming. You can even use a product library with a 64 character name so that the operator does not need to know the location of the test file within your computer storage.

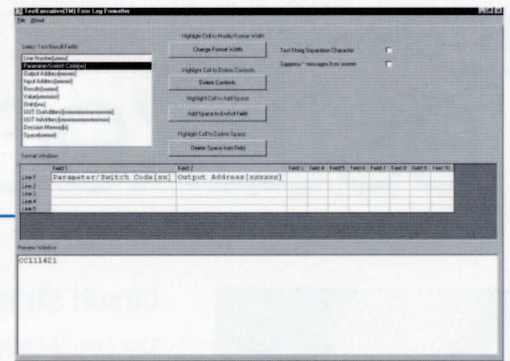
## Process Control

TestExecutive software includes many capabilities designed to improve the test process.

- The vast programming language offers you many options in terms of how you test your product.
- Reporting requirements can easily be satisfied with options that let you print only the errors while saving a test log of all tests performed. This information is crucial to process control.
- TestExecutive also diagnoses faults in your product so that you spend less time reworking errors.

## System Self-Testing

The system provides a quick and simple way to exercise and troubleshoot the system. The Self-Test function cycles through the switching system using the test conditions that you specify.



Utilize the error log formatter to customize error logs to fit your specific needs.

## Fault Locator

The most time consuming part of the test is locating the open or short after it has failed. DIT-MCO now can provide an optional diagnostic tool that will estimate the physical location of the fault.

When detecting a short or open circuit, TestExecutive analyses the circuit and performs a series of tests to determine the location of the short or open. No additional programming is required as the analysis operates in real-time.

Imagine the time savings achieved by knowing the fault location before you start trouble shooting.

## Templates

TestExecutive provides a variety of templates for quick and simple tester control. Each template prompts you for the necessary information so that you do not have to remember difficult programming commands. You can make selections from the drop down lists minimizing keystrokes.

## Manual

The Manual function sends instructions directly to the test equipment via the keyboard. Any operation performed during testing can also be performed manually. Use the manual interface to diagnose faults in your product and verify rework. The command window accepts any tester command interactively. The convenient memory function makes it simple to enter commands. Previous commands are stored in the command list and a display window shows common commands that you need to use frequently. To use one of the stored commands, simply drag the command to the command box.



**DIT-MCO® International**

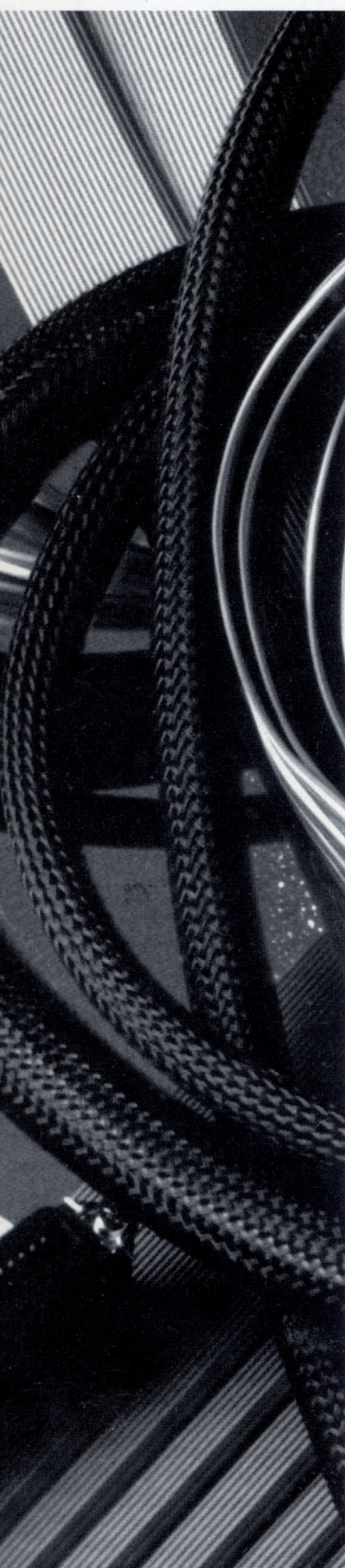
5612 BRIGHTON TERRACE • KANSAS CITY, MO 64130-4530

(800) 821-3487 • (816) 444-9700 • Fax (816) 444-9737 • Email [infolink@ditmco.com](mailto:infolink@ditmco.com) • [www.ditmco.com](http://www.ditmco.com)





# DIT-MCO's TestExecutive®



## Circuit String Search

The Circuit String Search function displays all test instructions for the specified circuit string. A circuit string is a contiguous list of test commands that begin at one output address and go to, but do not include, the next output address.

## Self-Program

Automatically learn the test program for a known good product. TestExecutive will let you select if you want to include continuity, insulation and isolation tests in the generated test program. You can even let TestExecutive create dielectric tests. With the optional header and footer files, the generated test program is ready to use with no additional editing.

## Automatic Hookup Verification

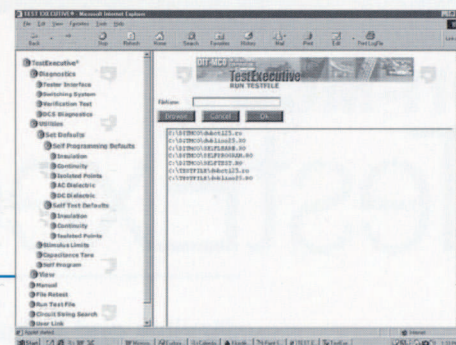
TestExecutive analyzes the test program and will perform a hook up test to verify that the interface to the product connects correctly to the tester. By selecting a single contact per connector, TestExecutive creates a short test program for the hookup tests. By verifying the hookup first, you eliminate wasted test time due to incorrect hookups.

## View Hookup Instructions

Keep your documentation on-line and display the instructions to the operator at the time of test. The "view hookup instructions" capability lets you eliminate stacks of paper and ensures that the most recent revision is used for the testing. Keep your hookup lists in the hookup file along with any general process instructions that the operators follow.

## Real-time display

Monitor the testing process with TestExecutive's real-time display. Not only can you see the active test address but you also see the measurement, stimulus value, error count and the total test count.



Familiar tree-structure organization menu can be configured based on administrative control.

## List Hookup File

A hookup file contains adapter cable hookup instructions along with any other information that the operator needs prior to starting the test. The test operator simply follows the instructions in the hookup file without requiring a printed document to follow.

## User Links

The User Link function allows you to initiate your own display of text or graphics in HTML format. You can create operator instructions and other aids tailored for your site with links to other HTML files or documents. The User Link lets you create an on-line reference library for use by the test operators.

### Links to other Sample Pages

[Link to JPEG Image of DIT-MCO Montage](#)

[Link to Picture 1](#)

[Link to Terminal Block Picture 1](#)

[Link to Picture 2](#)

[Terminal Block Picture 2](#)

[Terminal Block Picture 3](#)

Create hyperlinks to sample drawings, schematics and other information beneficial to the end user.

## Test Results

All system operations log to the scrolled test result window. If you want to work online, just scroll through the entire log after the testing completes. No longer do you need to rely on a printer to get your testing results although you can also print the log at any time.

The error reports customize to your needs. You can include all or a portion of the available information. For example, you may not desire to have the test addresses displayed but only the product language. With the error report configuration, only the data you want will be displayed. You can even specify the colors and fonts used in the display.