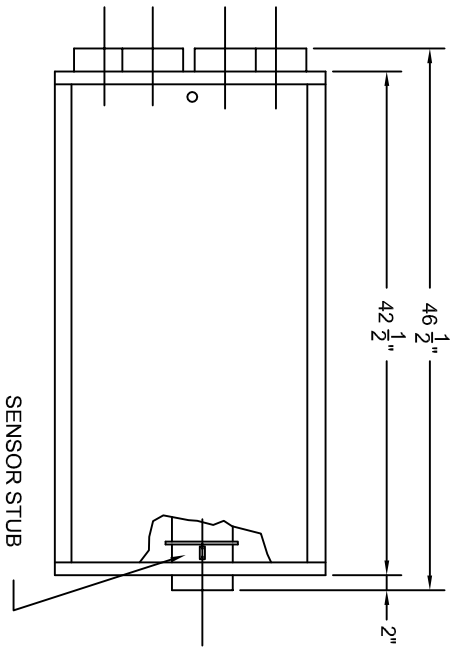
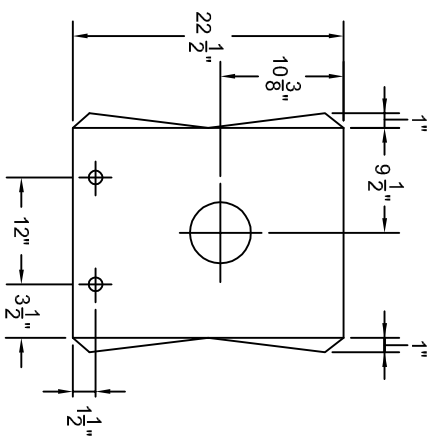


6-PORT SIDE

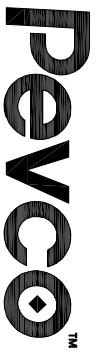


SIDE VIEW



1-PORT SIDE

- NOTES:**
1. MINIMUM OF 24" CLEARANCE ON ONE SIDE OF THE DIVERTER IS REQUIRED FOR ACCESS TO ALLOW FOR MAINTENANCE AND SERVICE.
 2. TWO 7/8" DIA. HOLES ON THE 1-PORT SIDE FOR COMMUNICATION CABLES AND CONDUIT CONNECTION.
 3. DIVERTER REQUIRES 120 VOLT, 5 AMP DEDICATED CIRCUIT (PROVIDED BY OTHERS).
 4. DIVERTER WEIGHT IS 150 LBS.



Baltimore, Maryland
 800.296.PEVCO (7382)
 WWW.PEVCO.COM

6-PORT DIVERTER

4" COMPUTERIZED PNEUMATIC TUBE SYSTEM

SCALE	NONE	DATE
DRAWN	SDW	05.01.00
REVISED	SDW	01.06.06
	SDW	10.22.07
DRAWING NUMBER	PEV222.1	REVISION
		4