



# Alouette Ware Wash Chemicals Inc.

## Single Rack Dish Machine



### KLE-175 GT Upright

- Straight-Through or Corner Configuration
- Microprocessor Based Electronic Control With 72, 90, 120 or 360 Second Wash Cycles
- Built-in Chemical Metering Pumps – Detergent, Sanitizer, Rinse
- Automatic Start/Stop
- Convenient Drain/Fill Switch
- Active Wash Cycle LED Light
- Water Connection Point for Water Driven Dispensin
- Systems such as Sink Mate and Sink Bowl
- 14 Gauge #304 Stainless Steel Construction
- Front or Side Accessible Scrap Trap
- Open Impeller with Pause Cycle
- Internal Pump Screen
- Electronic Dispenser Power Terminal

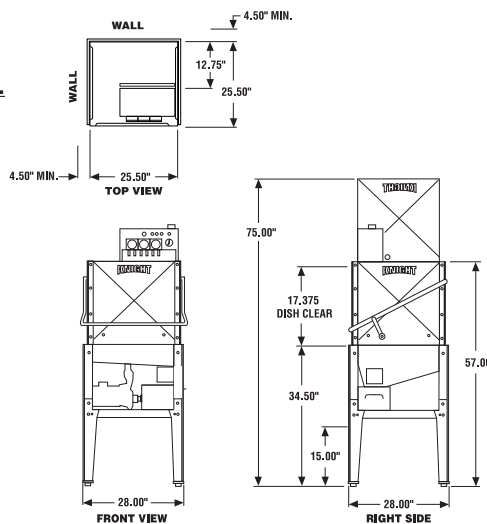


#### KLE-175 GT

Operating Cycle:  
 Operating Capacity: Racks Per Hour  
 Wash Time:  
 Rinse Time:  
 Drain Time:  
 Wash Tank Capacity:  
 Wash Pump Capacity:  
 Recommended Wash Temperature:  
 Water Inlet:  
 Drain I.P.S.:  
 Wash Pump Motor:  
 Dimensions:  
 Table Height:  
 Max. Clearance For Dishes:  
 Standard Dish Rack:  
 Shipping Weight:  
 Electrical Rating:  
 Load Amps:



	<b>72 Sec.</b>	<b>90 Sec.</b>	<b>120 Sec.</b>
Operating Capacity: Racks Per Hour	46	37	30
Wash Time:	37 Sec.	45 Sec.	55 Sec.
Rinse Time:	24 Sec.	30 Sec.	50 Sec.
Drain Time:	11 Sec.	15 Sec.	15 Sec.
Wash Tank Capacity:	1.75 Gallons		
Wash Pump Capacity:	57 GPM		
Recommended Wash Temperature:	140 Degrees		
Water Inlet:	3/4"		
Drain I.P.S.:	1.5"		
Wash Pump Motor:	1 HP		
Dimensions:	25.5" D x 25.5" W x 67" H		
Table Height:	34"		
Max. Clearance For Dishes:	17"		
Standard Dish Rack:	20" x 20"		
Shipping Weight:	280 Pounds		
Electrical Rating:	120V 60Hz, 240V 50/60Hz		
Load Amps:	14, 7		



Alouette Chemicals

Richmond, B.C.  
 Tel: 604-233-7722 or  
 1-866-233-7188  
 Fax: 604-233-7723  
 Email: info@alochem.com