



Kappa Delta

Striving for that which is honorable, beautiful, and highest.

Epsilon Edition – Summer 2011

Epsilon President's Letter

Dear Kappa Delta Sisters,

Since I took on the role as President in January, I have strived to lead by example and keep KD's presence on LSU's campus strong as ever. We began the year with a Chapter Advisory Board and Council retreat. This was a great opportunity to set individual goals in addition to chapter goals. Improving sisterhood is continuously a goal of Epsilon as it is the foundation of our Sorority, we also chose to focus on Membership, Academic Success, and Community Service. We planned several events to ensure growth in these areas. We started a new tradition on Council, Epsilon's Order of the Emerald. In keeping with National Kappa Delta's prestigious Order of the Emerald, this honor goes to the council member who has displayed extraordinary service to our chapter. The recipient gets to wear the "Council Ring" for a week and receives an large emerald jewel to keep as a reminder of Epsilon's gratitude. The girls are proud to show off their ring!



As always, Epsilon has had a busy and exciting year. In 2010, Epsilon donated \$30,000 to the Dalrymple Gateway Project, and we have continued fundraising throughout this year. The Dalrymple Project will be a permanent gateway entrance to fraternity and sorority row, as well as the university. I will be proud to see a permanent example of Epsilon Chapter's legacy on LSU's campus.

Philanthropy is a large part of Epsilon's tradition. This year we celebrated our 20th year of our Shamrock Project. Thanks to the dedication and support of Shamrock CAB advisor Jennifer Artigue, Kim Hammett,



Epsilon members and dedicated alumnae, Epsilon Chapter raised \$51,631 for Prevent Child Abuse Louisiana and Prevent Child Abuse America. It has been extremely evident how much of a role our alumnae have played in our fundraising efforts over the years! Also this year, Epsilon held our first annual International Girls Day event. We are excited to make this event bigger and better this year! Last year's freshmen pledge class quickly grasped the importance of philanthropic involvement. Epsilon's new members hosted a fundraiser for "The Girls on the Run" Baton Rouge Chapter. They did everything from the planning to the organizing and promoting. They set up different stations at the KD chapter room to decorate bandanas, water bottles and cards. All of the decorated supplies will be given to the "Girls on the Run"



members on the day of their 5K race.



All of our great accomplishments were recognized by the Greek honor society, Order of Omega. Kappa Delta was named an Order of Omega Outstanding Chapter. Past President, Samantha Navarra, was awarded Order of Omega Outstanding President. Our members never cease to amaze me with their campus involvement. Another member, Sarah Wilson, was named as 2011-2012 Order of Omega President. Allison Lewis was also elected as Vice-President to Rho Lambda. We have also had numerous members inducted into the Greek honor societies of Order of Omega, Omicron Delta Kappa and Rho Lambda. Epsilon could not be more proud to call Miss Louisiana – USA, Page Pennock, one of our own. Page represented Louisiana, Epsilon and Kappa Delta as a whole with beauty and grace at the Miss USA pageant this summer. These are prestigious honors and we are proud of these accomplished members.

This year Epsilon had the pleasure of attending the 59th Biennial Convention in Tuscan, Arizona. Thirteen members of council were able to attend the event. Past president, Samantha Navarra, was also present at convention as a member of the 2011-2012 Chapter Development Consultant Team. Words cannot express the impact this Convention has made on each of us. We acquired leadership skills that will aid us on the remainder of our Executive Council term as well as in our future endeavors. Epsilon received numerous awards including the prestigious Merit Chapter Award. After we were awarded this, the ever-spirited Lydia Barousse lead all Epsilon members present in the LSU Fight Song. All of Convention knew Epsilon had arrived. The memories made at convention are some that I will hold close to my heart as some of the fondest Kappa Delta memories.



As you can see our accomplishments are widespread and plentiful; we have put our hearts and minds into the betterment of Kappa Delta, our campus and community by "making great things happen." I look forward to the upcoming year and welcoming Epsilon's 102nd pledge class. I want to extend a gracious thank you for all of your dedication to and love for Kappa Delta over the years. Our legacy and current progress is astounding, I am honored to call myself a Kappa Delta.

Love in AOT,

Whitney Haynes
Epsilon President



Epsilon VP Public Relation's Letter

Shamrock Project 2011

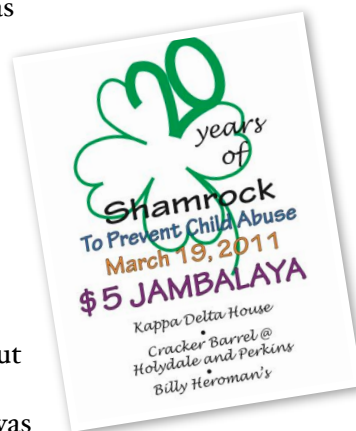
Thanks to 2011 Shamrock Chair, Morgan Foreman, Governor Bobby Jindall deemed March 19 "Prevent Child Abuse Louisiana Day". Epsilon was able to raise 51,631 dollars this year! Morgan, VP-Community Service, Livia Steen, and dedicated alumna, Jennifer Artigue, worked extremely hard to get the chapter and other alumnae excited to be involved.

The Baton Rouge St. Patrick's Day Parade was a great success. Epsilon added a fourth location for selling jambalaya this year, and it "paid" off tremendously! In addition to getting different businesses to donate money to the cause, chapter members partook in hourly shifts among the four locations.

Epsilon Chapter was also recognized with a great article about the history of it's philanthropy on the front page of the People Section of The Advocate; members appeared on WBRZ; and there was even a radio remote to advertise the event while the parade was rolling!

The weekend after the parade, fraternity men signed up to participate in Epsilon's Slamrock Volleyball Tournament. Each fraternity received a Slamrock T-shirt and were coached by Epsilon members. This event is a unique and fun way to reach out to the boys on our campus for their support.

Epsilon is extremely grateful for the unending support of local alumnae. Without your help and participation in our events, our chapter would not be one of the top fundraisers in the country. The entire chapter thanks each of you for your dedication to our efforts.



Love in AOT,

Lauren Sibley

Vice-President Public Relations



Dalrymple Drive Gateway Project - Leaving a Lasting Legacy

In 2009, Epsilon Chapter of Kappa Delta celebrated our 100th anniversary on the LSU campus. The chapter leaders, working with alumnae who planned the Centennial celebration, began to explore possible gifts to the University in honor our first 100 years on campus. We knew we wanted to leave a legacy that was:

- A permanent structure
- An attractive, highly visible memorable way to recognize Kappa Delta and LSU
- Something that no other group had done

After many discussions with various university officials, we decided to take the lead on the Campus Wayfinding Project. Currently, there is NO signage to welcome alumni, students, fans or visitors to LSU or even signify your arrival on the campus. This project provided KD with the opportunity to sponsor the “Dalrymple Drive Gateway Project.” This gateway will become the historic landmark entrance to both the campus and the fraternity/ sorority district.

In 2013, LSU will construct a round-a-bout at the intersection of West Lakeshore Drive (a.k.a., Sorority Row) and Dalrymple Drive. (This will be roughly across from the Sigma Chi Fraternity House.) The Dalrymple Gateway sign will be large, over 8 feet tall and 20 feet long and will be lighted at night. Bronze plaques recognizing Epsilon of KD, as the first sorority on campus, will be placed on the pillars of the sign.

To date, we have raised 60% of our \$100,000 goal for the “Dalrymple Drive Gateway Project.” We need your help to reach our goal. It is very easy to make a contribution:

- Make your check payable to LSU FOUNDATION
- On the memo line, write “Dalrymple Drive Gateway Project “ or account 180-01-F020
- Mail it to: Jamie Segar, Director of Development, Office of Student Life and Enrollment, 240 Thomas Boyd Hall, LSU, Baton Rouge, LA 70803
- Donations are tax deductible to the extent allowed by law
- Corporate matching gift programs are encouraged
- No gift is too large or too small!

Our chapter is really excited about this project! Please give serious consideration to contributing to the “Dalrymple Drive Gateway Project.” We believe this sign at the Dalrymple Drive entrance to the LSU campus will make Kappa Deltas very proud for many years to come. Thanks in advance for your support!

Love in AOT,
Epsilon Chapter Council

Convention

59th Biennial National Convention

The Great Journey - to Tucson, Arizona.

Kappa Deltas from all over traveled to the wild west for the 59th Biennial Convention. It was an amazing experience for Epsilon. From a rodeo roper performing lasso tricks in the opening ceremony to meeting “The Magnificent Seven” - National Council - the Epsilon representatives’ eyes were opened to a whole new Kappa Delta world. During the procession of the chapter flags, Epsilon’s flag was proudly presented by our President. Lining the walls of the convention hall were flags of every Kappa Delta chapter starting with our Alpha Chapter at Longwood University and ending with our newest Eta Chi Chapter at Elon University. We also had the pleasure of meeting fellow KD Leigh Anne Tuohy. She gave a powerful speech on continuously “Living Great.”

A special Memorial Service was held for one of Epsilon’s own, Ruth Williams Vordenbaumen, former National Collegiate Vice President. Stories were told about Ruth’s outstanding dedication to Kappa Delta in her relentless pursuit of excellence. Epsilon could not be more proud to call Mrs. Vordenbaumen an Epsilon gem.

Epsilon was awarded:

- Merit Chapter (awarded to the top 10% of KD chapters)
- Merit Chapter Advisory Board
- Honorable Mentions Girls Scouts Support
- Honorable Mentions Judy Hare Thorne Angelos Award
- Honorable Mentions Academic Excellence,
- Honorable Mentions Patricia Beecham Neiman Shamrock Award
- Honorable Mentions Philanthropy Award,
- Honorable Mentions Community Visibility
- Honorable Mentions Christine Harrison Magazine Award





Recruitment Reminders

Epsilon VP Membership's Letter

Epsilon had another amazing Recruitment this year. This could not have been possible without the extensive help of our alumnae. LSU had over 1,000 girls register for sorority Recruitment this year. We pledged 84 awesome New Members this year, who are eager to learn about Kappa Delta.

•Please remember that alumnae are NOT allowed to discuss any details of Formal Recruitment or any information regarding a potential new member during Recruitment Week.

•Panhellenic has enacted rules, which apply to alumnae as well as chapter members.

- There should be no contact between alumnae, collegiate members, and PNMs beginning on the dates designated as "Silence Period."
- These rules are in effect until Bid Day. An infraction occurred by alumnae will result in punishment to the chapter.
- Please remember that recommendations should include your current email address that you turn in so Epsilon can help keep up-to-date alumnae information.

Thank you so much for all of your help with this process!

Love in AOT,

KK Glorioso

Vice President Membership

Epsilon CAB President's Letter

Chapter Advisory Board 2011

Dear Sisters,

It is with great pleasure that I accept the role of Chapter Advisory Board Chairman this year. As you have read, Epsilon did exceedingly well this summer at the 2011 Convention, and was once again recognized as a Merit Chapter - one of Kappa Delta's best. Not only do we shine in the eyes of the national organization, but we are also tops on the LSU campus. I look forward to working with the chapter as we continue the tradition of excellence.

Joining me on the board this year are: Jennifer Norwood Artigue, Lydia Barousse, Emily Hightower Beach, Debbie Scruggs Heroman, Kay Jolly Hoffpauir, Rachel S. Garrett, Kathy Flanagan Marcel, and Miranda Wilson.

This is my seventh year on the CAB and the second time serving as Chairman - as they say "This ain't my first rodeo." I remember so well the ladies that gave of their time and energy when I was in the chapter. One of these wonderful sisters is still serving on our board. Kathy Marcel, CAB-Membership, just oversaw another fantastic recruitment. Congratulations to Kathy and K.K. for "sweeping the row" and for pledging 84 outstanding young women. Please join us at Epsilon for some of the fun activities the chapter council has planned for this year.

Love in AOT,

Becky Mullin Armour

CAB President

